



Torque Converter Shudder or Vibration Between 35 and 40 MPH (Supersedes 06-003, dated February 2, 2006, to update the information marked by the black bar)

SYMPTOM

The vehicle shudders or vibrates between 35 and 40 mph.

PROBABLE CAUSE

The torque converter is faulty.

CORRECTIVE ACTION

Replace the torque converter, or the torque converter and the transmission, and update the PCM with the HDS.

NOTE: You must update the PCM to complete the repair.

PARTS INFORMATION

Torque Converter: P/N 26000-RDJ-315

SOFTWARE INFORMATION

2003 Models:

HDS CD: July 2005 (or later)
 HDS Version: 1.018.016 (or later)
 PGM-FI Program ID: DJ3250 (or later)
 PGM-FI Program Part No.: 37805-RDJ-325 (or later)

2004 Models:

HDS CD: July 2005 (or later)
 HDS Version: 1.018.016 (or later)
 PGM-FI Program ID: DJ4050 (or later)
 PGM-FI Program Part No.: 37805-RDJ-405 (or later)

WARRANTY CLAIM INFORMATION

In warranty: The normal warranty applies.

OP#	Description	FRT
218100	Replace torque converter	6.5
223507	PCM update	0.3

Failed Part: P/N 26000-RDJ-305
 Defect Code: 03214
 Symptom Code: 04504
 Template ID: 06-003A
 Skill Level: Repair Technician

OP#	Description	FRT
218102	Replace automatic transmission	7.3

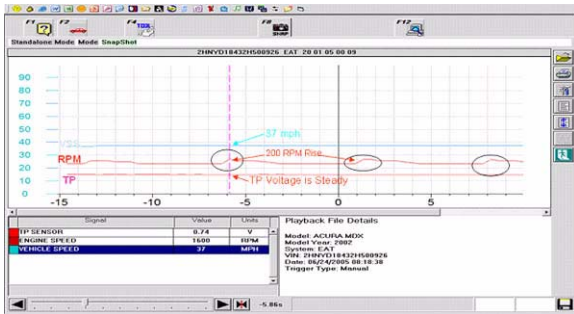
Failed Part: Use the **RM** part number (from the repair order) without the **RM**
 Example: 06200-PY4-A00
 Defect Code: 58400
 Symptom Code: 04504
 Skill Level: Repair Technician
Out of warranty: Any repair performed after warranty expiration may be eligible for goodwill consideration by the District Parts and Service Manager or your Zone Office. You must request consideration, and get a decision, before starting work.



CLIENT INFORMATION: The information in this bulletin is intended for use only by skilled technicians who have the proper tools, equipment, and training to correctly and safely maintain your vehicle. These procedures should not be attempted by “do-it-yourselfers,” and you should not assume this bulletin applies to your vehicle, or that your vehicle has the condition described. To determine whether this information applies, contact an authorized Acura automobile dealer.

DIAGNOSIS

1. To confirm the client's complaint, test-drive the vehicle on a smooth road, preferably with a slight incline. Set the cruise control between 35 and 40 mph, and monitor the engine rpm using the vehicle's tachometer, or use the HDS to take a snapshot of the engine rpm.



2. If the engine speed fluctuates several hundred rpm while maintaining a constant vehicle speed, disconnect the EGR valve and retest the vehicle.
 - If the fluctuation is gone, refer to the EGR troubleshooting in the service manual.
 - If the engine rpm still fluctuates, and the transmission does not have any other symptoms (shifting problems, slipping, transmission DTCs) go to step 3.
3. Drain the transmission fluid, then strain it through a paint strainer.
 - If you find little or no contamination in the strainer, the ATF is OK, even if it smells burnt, is discolored, and/or the magnetic drain plug has small chips, flakes, or metal fuzz on it. Go to **REPAIR PROCEDURE A**.
 - If you find large amounts of contamination (pieces of metal or friction material) in the strainer, go to **REPAIR PROCEDURE B**.

REPAIR PROCEDURE A

1. Remove the torque converter:
 - Refer to page 14-203 of the *2003–04 MDX Service Manual*, or
 - Online, enter keyword **A/T REM**, and select **A/T Removal** from the list.
2. Install the torque converter:
 - Refer to page 14-215 of the *2003–04 MDX Service Manual*, or
 - Online, enter keyword **A/T INSTALL**, and select **A/T Installation** from the list.
3. Update the PGM-FI software using HDS version 1.018.016 or later (see **SOFTWARE INFORMATION**). Refer to service bulletin 01-026, *Updating the ECM/PCM*.

4. Do the idle learn procedure:

- Make sure all electrical items (A/C, audio unit, defogger, lights, etc.) are off.
- Start the engine, and let it run until it reaches its normal operating temperature (cooling fan cycles twice).
- Let the engine idle with the throttle fully closed for 10 minutes.

REPAIR PROCEDURE B

Follow the **IN-WARRANTY EXCHANGE** steps in service bulletin 90-009, *Automatic Transmission In-Warranty Exchange Program*, to order a remanufactured A/T, replace the failed A/T, and return the failed A/T core.

1. Remove the transmission:
 - Refer to page 14-203 of the *2003–04 MDX Service Manual*, or
 - Online, enter keyword **A/T REM**, and select **A/T Removal** from the list.
2. Clean the transmission cooler. Refer to service bulletin 89-015, *ATF Cooler Cleaner*.
3. Install a remanufactured transmission:
 - Refer to page 14-215 of the *2003–04 MDX Service Manual*, or
 - Online, enter keyword **A/T INSTALL**, and select **A/T Installation** from the list.
4. Update the PGM-FI software using HDS version 1.018.016 or later (see **SOFTWARE INFORMATION**). Refer to service bulletin 01-026, *Updating the ECM/PCM*.
5. Do the idle learn procedure:
 - Make sure all electrical items (A/C, audio unit, defogger, lights, etc.) are turned off.
 - Start the engine and let it run until it reaches its normal operating temperature (cooling fan cycles twice).
 - Let the engine idle with the throttle fully closed for 10 minutes.