

Hoses, Pressure and Return

Hose Fittings, Pressure and Return Line at Steering Gear and Pump

The tube portion of the power steering hose assembly may disengage from the connector assembly for any of the following reasons:

- if not fully assembled.
- if snap ring is missing.
- if female port in power rack and pinion steering gear or power steering pump (3A674) is too shallow.
- if tube nut, power steering pressure hose (3A719) or power steering return hose end is not machined or formed properly.

If the tube disengages at the steering gear housing fitting or power steering pump, check for a snap ring in the connector assembly before attempting to seat the tube into the connector assembly.

The tube is fully engaged in its connector assembly when the snap ring (part of the connector assembly) is seated in the groove machined in the tube for this purpose. The tube will not pull out once properly engaged. Attempt to pull out using hand force. If the tube does not pull out, verify by properly filling system, starting the engine and turning the steering wheel lock-to-lock with the wheels on the ground and fully loaded. Check for leaks. If a leak still occurs, replace hose assembly with the correct service hose assembly which has the connector assembly pre-installed.

Hose(s), Pressure—3.0L (2V) Engine

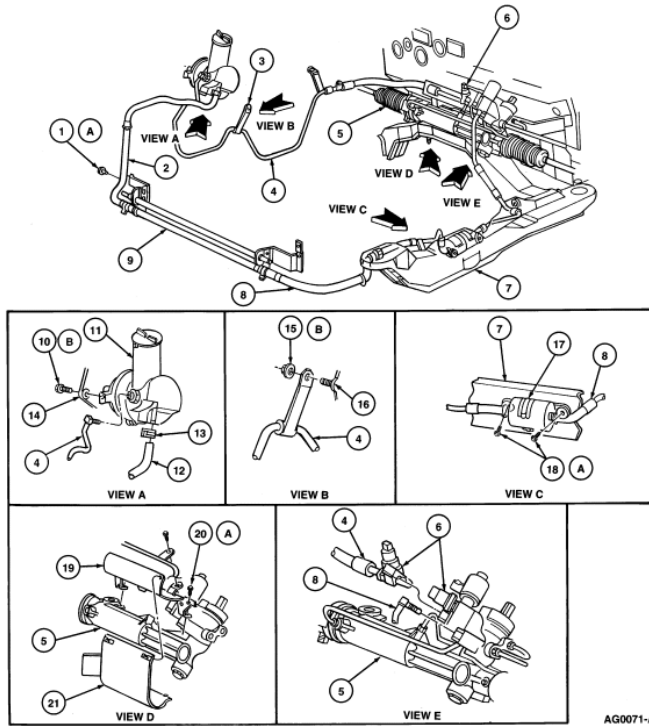
Removal

1. Open hood.
2. Disconnect battery ground cable (14301). Refer to [Section 14-01](#).
3. Remove drive belt (8620). Refer to [Section 03-05](#).
4. Disconnect power steering left turn pressure hose (3A714) from power steering pump fitting.
5. Raise vehicle on hoist. Refer to [Section 00-02](#).
6. Remove RH wheel and tire and two-piece splash shield from wheel well.
7. Disconnect both pressure line mounting brackets from engine assembly.
8. Lower vehicle.
9. Remove air cleaner outlet tube. Refer to [Section 03-12](#).
10. From behind engine, remove two push-pin retainers at top of steering gear heat shield and pull steering gear heat shield away from steering rack.
11. Remove bolt through pressure line mounting bracket from top rear of steering shaft U-joint shield (3F540).
12. Using a crows-foot wrench, disconnect power steering left turn pressure hose at power steering rack fitting.
13. Remove power steering left turn pressure hose out through engine compartment.

Installation

1. Follow removal procedure in reverse order.
2. Install new O-rings on power steering left turn pressure hose.
3. Fill and bleed power steering system with Motorcraft MERCON Multi-Purpose (ATF) Transmission Fluid XT-2-QDX or equivalent meeting Ford MERCON specification. Check system for leaks and proper operation. Refer to [Section 11-00](#).

Power Steering System—3.0L (2V) Engine



AG0071-A

Item	Part Number	Description
1	N606676-S428	Screw (4 Req'd)
2	3493	Power Steering Return Line (Cooler-To-Pump)
3	—	Retainer (Part of 3F524)
4	3A714	Power Steering Left Turn Pressure Hose
5	—	Power Rack and Pinion Steering Gear
6	3N824	Power Steering Pressure Switch
7	—	Side Rail
8	3A713	Power Steering Return Hose
9	3D746	Power Steering Fluid Cooler
10	N800199-S8M	Bolt (3 Req'd)
11	3A674	Power Steering Pump
12	3493	Power Steering Return Line
13	2344	Power Steering Return Line Clamp
14	3C511	Power Steering Pump Support
15	N621939-S60	Nut
16	—	Engine Reference
17	3F619	Bracket
18	N611176-S56	Bolt (2 Req'd)
19	3C510	Power Steering Hose Bracket
20	N605893-S301	Screw
21	3517	Steering Column U-Joint Shield
A	—	Tighten to 9-12 Nm (80-106 Lb-In)
B	—	Tighten to 23-32 Nm (17-23 Lb-Ft)

3.0L, 3.4L (4V) Engine

SPECIAL SERVICE TOOL(S) REQUIRED

Description	Tool Number
Steering Pump Pulley Remover	T69L-10300-B
Steering Pump Pulley Replacer	T65P-3A733-C

Removal

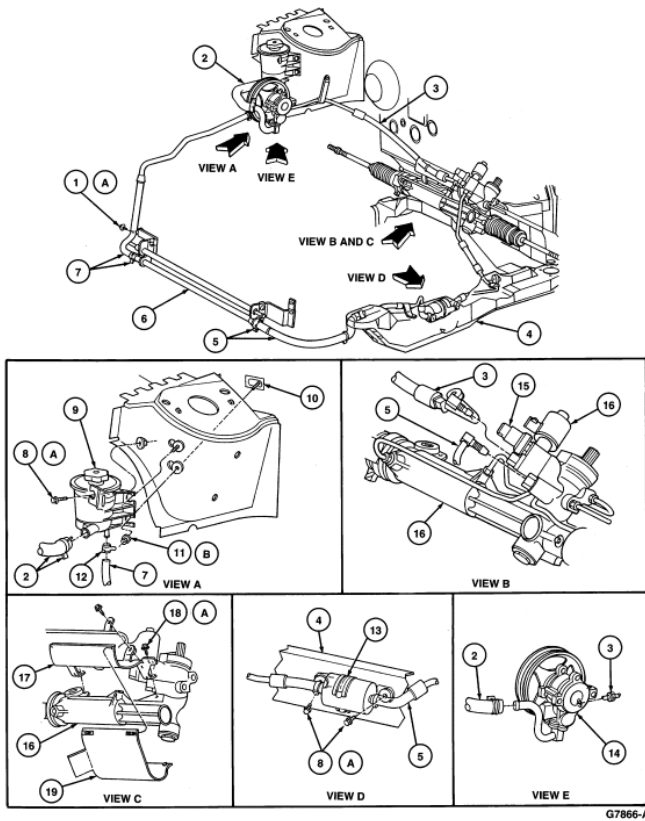
1. Open hood.
2. Disconnect battery ground cable. Refer to [Section 14-01](#).

3. Remove cowl top panel (02010). Refer to [Section 01-02](#).
4. Drain and remove degas bottle (8A808). Refer to [Section 03-03](#).
5. Drain and remove power steering pump reservoir (3E764) as described.
6. Remove drive belt. Refer to [Section 03-05](#).
7. Using Steering Pump Pulley Remover T69L-10300-B, remove power steering pump pulley (3A733) from power steering pump as described.
8. Disconnect pressure line mounting bracket from engine assembly.
9. Disconnect power steering left turn pressure hose from power steering pump fitting.
10. Disconnect electrical connector from power steering pressure switch (PSP switch) (3N824).
11. Disconnect pressure line mounting bracket at top of steering shaft U-joint shield.
12. Disconnect power steering left turn pressure hose from power steering rack fitting and remove power steering left turn pressure hose from vehicle.

Installation

1. Follow removal procedure in reverse order.
2. Use Steering Pump Pulley Replacer T65P-3A733-C to install power steering pump pulley. Install new O-rings on power steering left turn pressure hose.
3. Fill and bleed power steering system with Motorcraft MERCON Multi-Purpose (ATF) Transmission Fluid XT-2-QDX or equivalent meeting Ford MERCON specification. Check system for leaks and proper operation. Refer to [Section 11-00](#).

Power Steering System—3.0L (4V) Engine



Item	Part Number	Description
1	N606676-S428	Screw
2	3691	Power Steering Reservoir Pump Hose
3	3A714	Power Steering Left Turn Pressure Hose
4	—	Frame
5	3A713	Power Steering Return Hose
6	3D746	Power Steering Fluid Cooler
7	3493	Power Steering Return Line
8	N611176-S56	Screw

9	3E764	Power Steering Pump Reservoir
10	N808515-S36	Stud
11	N621906-S100	Nut
12	2344	Power Steering Return Line Clamp
13	3F619	Bracket
14	3A674	Power Steering Pump
15	3N824	Power Steering Pressure Switch
16	—	Power Rack and Pinion Steering Gear
17	3C510	Power Steering Hose Bracket
18	N605893-S301	Screw
19	3F540	Steering Shaft U-Joint Shield
A	—	Tighten to 9-12 Nm (80-106 Lb-In)
B	—	Tighten to 4-5 Nm (36-44 Lb-In)

Hose(s), Return—3.0L (2V) Engine

Removal

1. Open hood.
2. Disconnect battery ground cable. Refer to [Section 14-01](#).
3. Disconnect power steering return hose (3A713) from power steering pump. Drain fluid into a suitable container.
4. Raise vehicle on hoist.
5. Disconnect return line mounting bracket at LH rear lower of front sub-frame (5C145) .
6. Pull power steering filter out of retaining clips on inside of LH front sub-frame .
7. Disconnect power steering return hose from power steering rack fitting.
8. Disconnect power steering return hose from LH of power steering fluid cooler (3D746). Drain fluid into a suitable container.
9. Disconnect return line mounting bracket at LH front of front sub-frame .
10. Remove power steering return hose from underneath vehicle.
11. Disconnect power steering return hose from RH of power steering fluid cooler.
12. Remove power steering return hose from between power steering cooler and oil pan flange reinforcement (6A674) .

Installation

1. Follow removal procedure in reverse order.
2. Install new Teflon® O-rings on power steering return hose.
3. Fill and bleed power steering system with Motorcraft MERCON Multi-Purpose (ATF) Transmission Fluid XT-2-QDX or equivalent meeting Ford MERCON specification. Check system for leaks and proper operation. Refer to [Section 11-00](#).

3.0L, 3.4L (4V) Engine

Removal

1. Open hood.
2. Disconnect battery ground cable. Refer to [Section 14-01](#).
3. Remove power steering reservoir pump hose (3691) from between power steering pump reservoir and power steering pump.
4. Remove three fasteners retaining power steering pump reservoir to RH strut tower. Pull up power steering pump reservoir and disconnect power steering return hose. Drain fluid into a suitable container.
5. Raise vehicle on hoist. Refer to [Section 00-02](#).
6. Disconnect power steering return hose from RH side of power steering fluid cooler and remove power steering return hose from vehicle.
7. Disconnect power steering return hose from power steering rack fitting.
8. Remove retaining bolts from return line mounting brackets at LH rear, middle and front of front sub-frame .
9. Disconnect power steering return hose from LH side of power steering fluid cooler and remove power steering fluid cooler from underneath vehicle.

Installation

1. Follow removal procedure in reverse order.
2. Install new O-rings on power steering return hose.
3. Fill and bleed power steering system with Motorcraft MERCON Multi-Purpose (ATF) Transmission Fluid XT-2-QDX or equivalent meeting Ford MERCON specification. Check system for leaks and proper operation. Refer to [Section 11-00](#).

