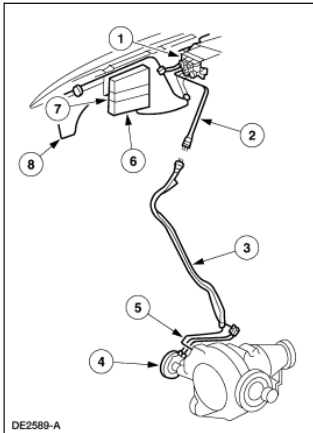


Front Drive Axle and Differential



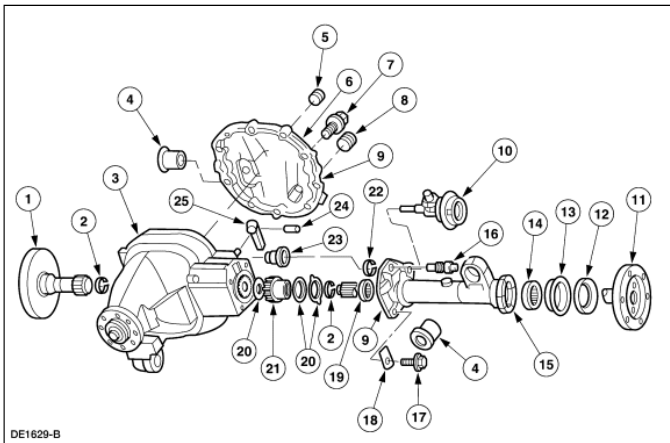
[Printable View \(202 KB\)](#)

Front Drive Axle, Vacuum Components



Item	Part Number	Description
1	—	Vacuum solenoids
2	—	Upper vacuum lines
3	—	Lower vacuum lines/front axle vent tube
4	7G360	Front axle actuator motor assy
5	4338	Axle housing vent
6	—	Auxiliary vacuum reservoir
7	19A566	A/C vacuum reservoir tank and bracket
8	—	Engine vacuum reservoir

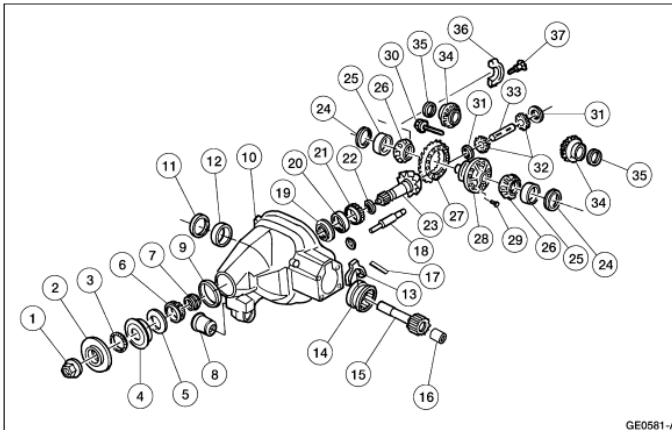
Front Axle Assembly — Exploded View



Item	Part Number	Description
1	3A381	Axle shaft (LH)
2	N808765-S	Snap ring
3	3C202	Differential carrier assy
4	3A443	Bushing (2 req'd)
5	373098	Fill plug
6	3N136	Differential housing cover
7	390919	Differential housing cover bolt (10 req'd)
8	390943	Magnetic drain plug
9	F4AZ-19562-B	Gasket (silicone)
10	7G360	Front axle actuator motor assy
11	3A380	Axle shaft (RH)
12	3A379	Axle shaft dust deflector
13	3B112	Axle shaft dust seal
14	4B413	Axle shaft bearing assy (outer)
15	3B210	Axle housing tube (RH)
16	4338	Axle housing vent
17	N808703	Axle housing tube bolt (4 req'd)


18	4121	Identification tag
19	4B413	Axle shaft bearing assy (inner)
20	3N126	Thrust washer (3 req'd)
21	3A392	Axle clutch gear
22	N808704-S	E-ring
23	7W082	Clutch shaft rod boot
24	—	Shift lever retaining pin (part of 7K336)
25	7K336	Shift lever

Front Differential — Exploded View



GE0581-A

Item	Part Number	Description
1	389546	Pinion nut
2	4858	Axle universal joint flange
3	4859	Drive pinion oil seal deflector
4	3N134	Pinion seal
5	386989	Slinger
6	4621	Pinion bearing (outer)
7	4662	Drive pinion collapsible spacer
8	3A443	Bushing
9	4616	Pinion bearing cup
10	3A412	Differential carrier
11	3B112	Driveshaft inner dust seal
12	4B413	Axle shaft bearing assy
13	3N139	Clutch fork
14	7R262	Coupler shift selector gear
15	7L253	Axle cluster gear shaft
16	3N106	Pilot bearing assy
17	7G100	Manual shaft retaining pin
18	3C211	Axle shaft shift lever
19	4631	Pinion bearing oil baffle
20	4628	Pinion bearing cup
21	4630	Pinion bearing (inner)
22	4663	Drive pinion bearing adjustment shim
23	3N175	Pinion gear
24	4A451	Differential bearing shim (2 req'd)
25	4221	Differential bearing cup (2 req'd)
26	4221	Differential bearing (2 req'd)
27	3A397	Ring gear
28	4205	Differential case
29	388056	Ring gear bolt (10 req'd)
30	387426	Differential pinion shaft bolt
31	4230	Differential pinion thrust washer (2 req'd)
32	4215	Differential pinion gear (2 req'd)
33	4211	Differential pinion shaft
34	4236	Differential side gear (2 req'd)
35	386984	Differential side gear thrust washer (2 req'd)
36	4224	Differential bearing cap (2 req'd)
37	391583	Differential bearing cap bolt (4 req'd)

- The axle housing assembly consists of a cast-aluminum center section, a removable cast-aluminum axle housing tube (3B210), and a differential housing cover (3N136). Both the axle housing tube and the differential housing cover use silicone sealant as a gasket.
- The hypoid-design gearset consists of an 8.8-inch ring gear (3A397) and a pinion gear (3N175). Two opposed tapered roller bearings support the drive pinion in the axle housing.
- A drive pinion collapsible spacer (4662), located on the pinion shaft, maintains pinion bearing preload. The pinion nut adjusts the preload.
- Differential bearing shims (4A451), located between the differential bearing cups (4221) and the axle housing, adjust the differential bearing preload and the ring gear backlash.
- The differential case (4205) is a one-piece design with two openings to allow for assembly of the internal components and lubricant flow. Two opposed tapered roller bearings (differential bearings [4221]) support the differential case in the axle housing. Removable differential bearing caps (4224) retain the differential assembly in the axle housing.
- Inside the differential case, the differential pinion shaft (4211) supports two differential pinion gears (4215). The pinion gears engage the differential side gears (4236), to which the left axle shaft (3A381) and the axle cluster gear shaft (7L253) are splined. The differential pinion shaft bolt retains the differential pinion shaft in the differential case.
- An embossed metal tag, bolted to the rear face of the RH axle tube, contains front axle identification information.
-  **CAUTION: Actuate the front drive axle with the wheels in a straight ahead position, and at light throttle only.**

A front axle actuator motor assembly (7G360), controlled by an instrument panel-mounted switch, actuates the front drive axle.