

# Service Hint

**Product:** Plasma TV

**Number:** SH-B34-08-03

**Date:** April 2008

**Panasonic Service and Technology Company**  
Product Engineering Division  
50 Meadowland Parkway, Secaucus, NJ 07094  
Division of Panasonic Consumer Electronics Company  
A Division of Panasonic Corporation of North America

**Models:**

**TH-42PZ700U**

**TH-42PZ700UA**

**TH-42PZ77U**

## Keep this Hint with the respective Service Manual

**Subject:** How to diagnose power LED blinks 7 times symptom.

**Possible Causes:**

1. Conduction between the sustain and scan electrodes causes the output ICs to fail on either the SD or SU board, depending on the location of the damaged pixels. -OR-

2. FET transistors on the SC board fail, preventing the delivery of scan pulses to the panel.

**Instructions:** Follow the flowchart on page 2. Based on the results, you may:

1. Replace the SC board and update the D-board firmware. -OR-

2. Replace the panel and failed drive board (SD or SU) and update the D-board firmware.

**Notes:**

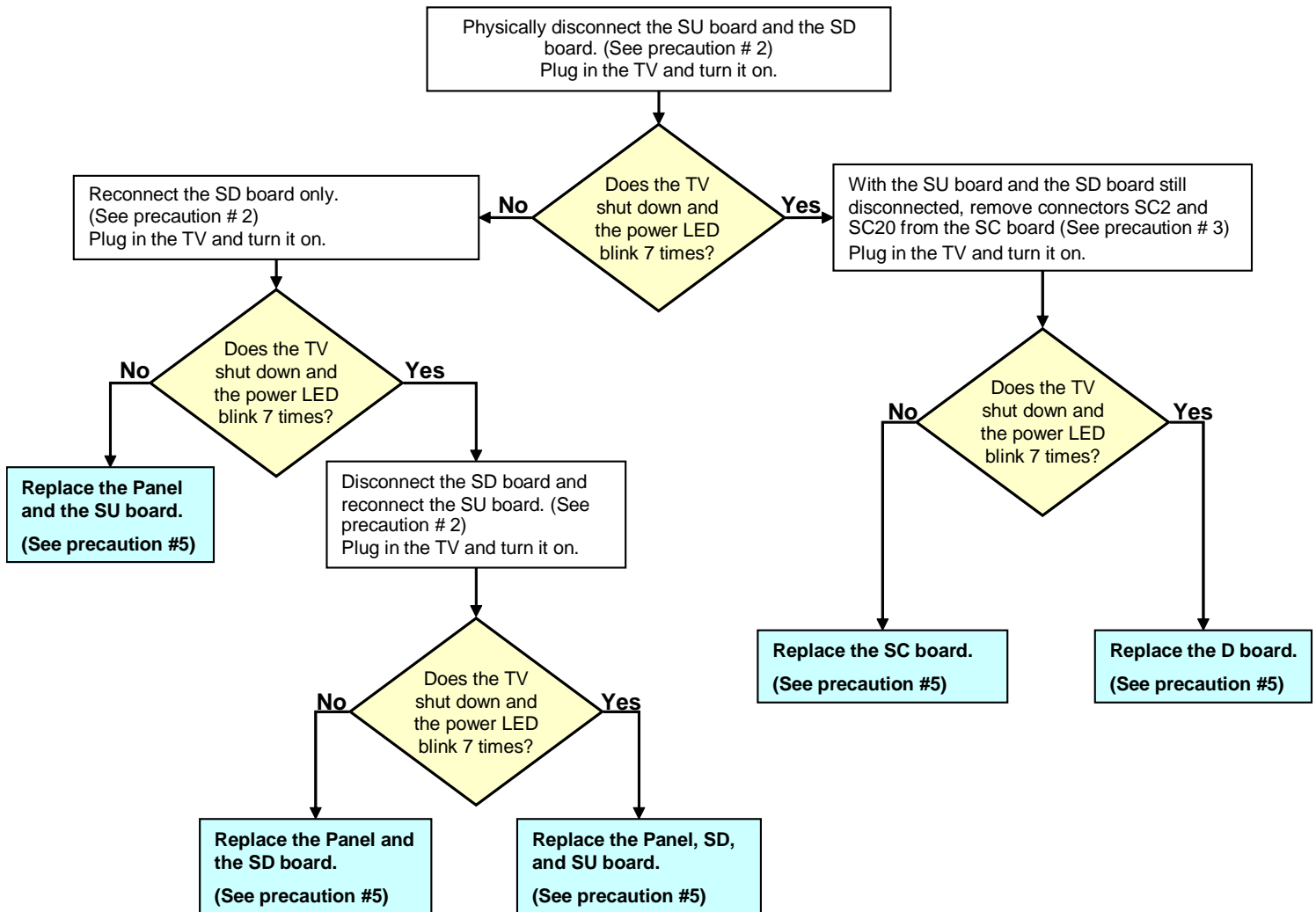
1. Models TH-42PZ700U and TH-42PZ700UA are similar, but their board part numbers are different. Therefore, when ordering parts, use the manufacturer ID number as the model number. The manufacturing ID is printed on the large silver sticker on the back cover, to the right of the serial number.

2. Upon completion of the repair, perform "D Board Firmware Upgrade" according to the instructions in Service Hints SH-B34-08-01 for model TH-42PZ700U and SH-B34-08-02 for models TH-42PZ77U and TH-42PZ700UA. Firmware and instructions can be found at:  
<http://www.pasctraining.panasonic.com/firmware>

**WARNING!** This Service Hint is designed for experienced repair technicians only and is not designed for use by the general public. It does not contain warnings or cautions to advise non-technical individuals of potential dangers in attempting to service a product. **Products powered by electricity should be serviced by experienced professional technicians.** Any attempt to service or repair the product or products dealt with in this Service Bulletin by anyone else could result in serious injury or death.

©2008 Panasonic Corporation of North America. All rights reserved. Unauthorized copying and distribution is a violation of law.

# Troubleshooting flowchart for 7 blinks symptom



## Precautions:

1. Disconnect AC Power prior to making or removing any connections!!
2. It's not necessary to remove the panel's flex-cables from connectors SU1~SU4 on the SU board or SD1~SD4 on the SD board when isolating these 2 drive boards.
3. It is necessary to discharge P2/SC2 or P11/SS11 before re-connecting them in order to prevent arcing that may be stored by VSUS voltage.
4. Make sure all the connectors on the SU, SD, SC, and the P boards are seated properly.
5. Upon completion of the repair, perform "D Board Firmware Upgrade" according to the instructions in Service Hints SH-B34-08-01 for model TH-42PZ700U and SH-B34-08-02 for models TH-42PZ77U and TH-42PZ700UA. Firmware can be found here:  
<http://www.pasctraining.panasonic.com/firmware>

**WARNING!** This Service Hint is designed for experienced repair technicians only and is not designed for use by the general public. It does not contain warnings or cautions to advise non-technical individuals of potential dangers in attempting to service a product. **Products powered by electricity should be serviced by experienced professional technicians.** Any attempt to service or repair the product or products dealt with in this Service Bulletin by anyone else could result in serious injury or death.

©2008 Panasonic Corporation of North America. All rights reserved. Unauthorized copying and distribution is a violation of law.