

2008 Lincoln MKZ AWD V6-3.5L

Vehicle Level → Instrument Panel, Gauges and Warning Indicators → Instrument Cluster / Carrier → Service and Repair → Instrument Cluster (IC) ←

Instrument Cluster (IC)

[Notes](#)

INSTRUMENT CLUSTER (IC)

Fusion, Milan

Fusion, Milan

N0026643

Item	Part Number	Description
1	54044D70	Instrument cluster (IC) finish panel
2	W705314	Instrument cluster (IC) screws (2 required)

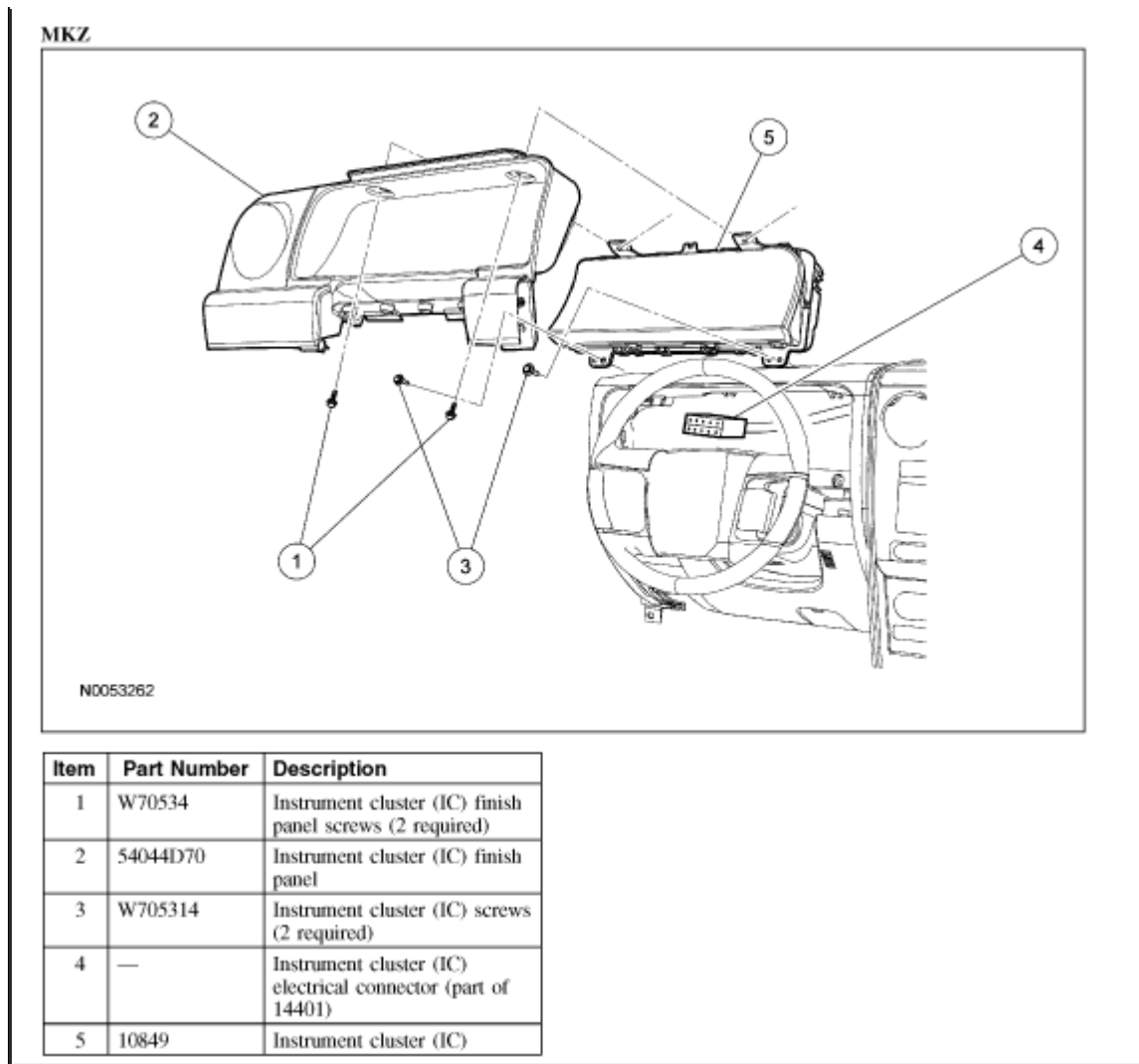
Item	Part Number	Description
3	10849	Instrument cluster (IC)
4	—	Instrument cluster (IC) electrical connector (part of 14401)

(Continued)

Zoom

Sized for Print

MKZ



Zoom

Sized for Print

Removal

All vehicles

1. If installing a new instrument cluster (IC), upload the module configuration to the scan tool.
2. Tilt the steering column to the lowest position. **MKZ**
3. Remove the 2 instrument cluster (IC) finish panel screws and the instrument cluster (IC) finish panel.
4. Remove the 2 screws and the instrument cluster (IC).
 - Disconnect the electrical connector.

Fusion, Milan

5. **NOTE:** The instrument cluster (IC) finish panel is held in place by spring

clips located on the finish panel. Remove the instrument cluster (IC) finish panel.

6. **NOTE:** The top of the instrument cluster (IC) is a snap fit to the instrument panel. To ease removal of the instrument cluster (IC) insert a suitable tool between the instrument panel and the top of the instrument cluster (IC) and use a slight outward movement until the top of the instrument cluster (IC) is released. The instrument cluster (IC) can now be rotated outwards. Remove the 2 screws and the instrument cluster (IC).
 - Disconnect the electrical connector.

Installation

MKZ

1. Position the instrument cluster (IC) in the instrument panel.
 - Connect the electrical connector.
 - Install the 2 screws.
2. Position the instrument cluster (IC) finish panel and install the 2 screws.
Fusion, Milan
3. **NOTE:** Position the bottom portion of the instrument cluster (IC) on the instrument panel locator pins first then rotate the top of the instrument cluster (IC) into position. Position the instrument cluster (IC) in the instrument panel.
 - Connect the electrical connector.
 - Install the 2 screws.
4. Install the instrument cluster (IC) finish panel. **All vehicles**
5. If a new instrument cluster (IC) was installed, download the instrument cluster (IC) configuration information from the scan tool into the new instrument cluster (IC).
6. **NOTE:** If a new instrument cluster (IC) is installed, updated, or re-configured, the instrument cluster and the powertrain control module (PCM) require a parameter reset to allow the instrument cluster (IC) and the PCM to recognize each other. Failure to carry out the parameter reset to the instrument cluster (IC) and the PCM may result in a no start condition. If a new instrument cluster (IC) was installed, updated or reconfigured, carry out the parameter reset procedure.
7. **NOTE:** The vehicles integrated keys (or standard passive anti-theft system [PATS] keys) must be programmed to the new instrument cluster. If a new instrument cluster (IC) was installed, program the integrated keys.