

[Home](#) | [Account](#) | [Contact ALLDATA](#) | [Log Out](#) | [Help](#)

PAUL REDEHOFT

[Select Vehicle](#) | [New TSBs](#) | [Technician's Reference](#)

Component Search:

OK

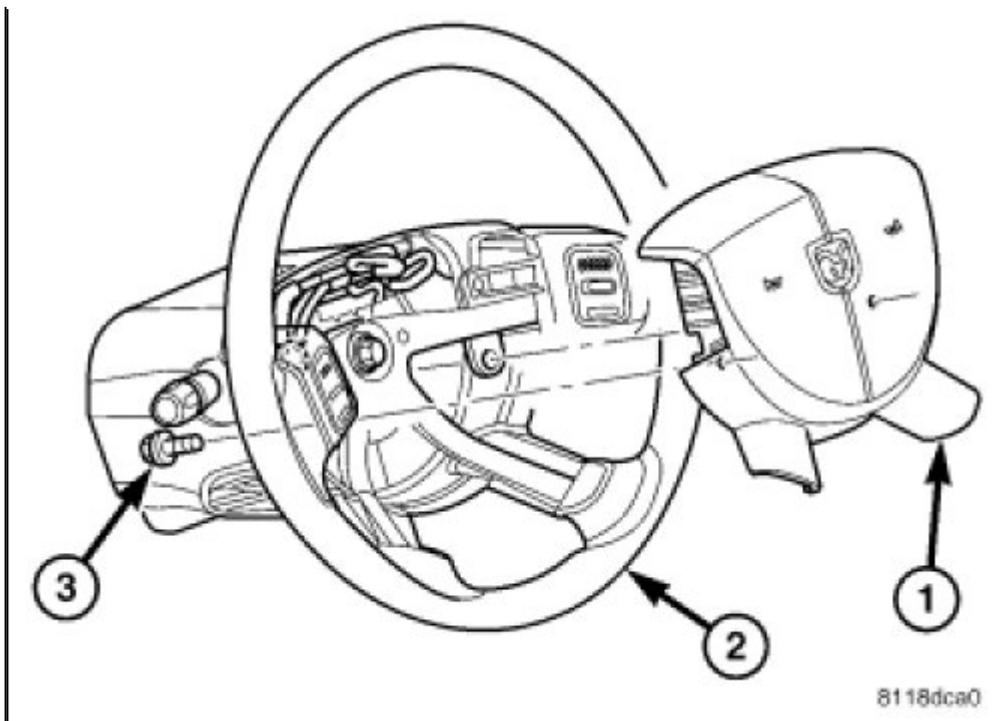
 [Conversion Calculator](#)**2007 Dodge Truck Durango 2WD V8-5.7L VIN 2**[Vehicle Level](#) → [Restraint Systems](#) → [Air Bag Systems](#) → [Air Bag](#) → [Service and Repair](#) → [Removal and Replacement](#) → [Air Bag-Driver](#) → [Removal](#) ←**Removal**[Notes](#)**REMOVAL**

WARNING: To avoid serious or fatal injury on vehicles equipped with airbags, disable the supplemental restraint system before attempting any steering wheel, steering column, airbag, [seat belt tensioner](#), [impact sensor](#), or instrument panel component diagnosis or service. Disconnect and isolate the battery negative (ground) cable, then wait two minutes for the system capacitor to discharge before performing further diagnosis or service. This is the only sure way to disable the supplemental restraint system. Failure to take the proper precautions could result in accidental airbag deployment.

WARNING: To avoid serious or fatal injury when removing a deployed airbag, rubber gloves, eye protection, and a long-sleeved shirt should be worn. There may be deposits on the airbag cushion and other interior surfaces. In large doses, these deposits may cause irritation to the skin and eyes.

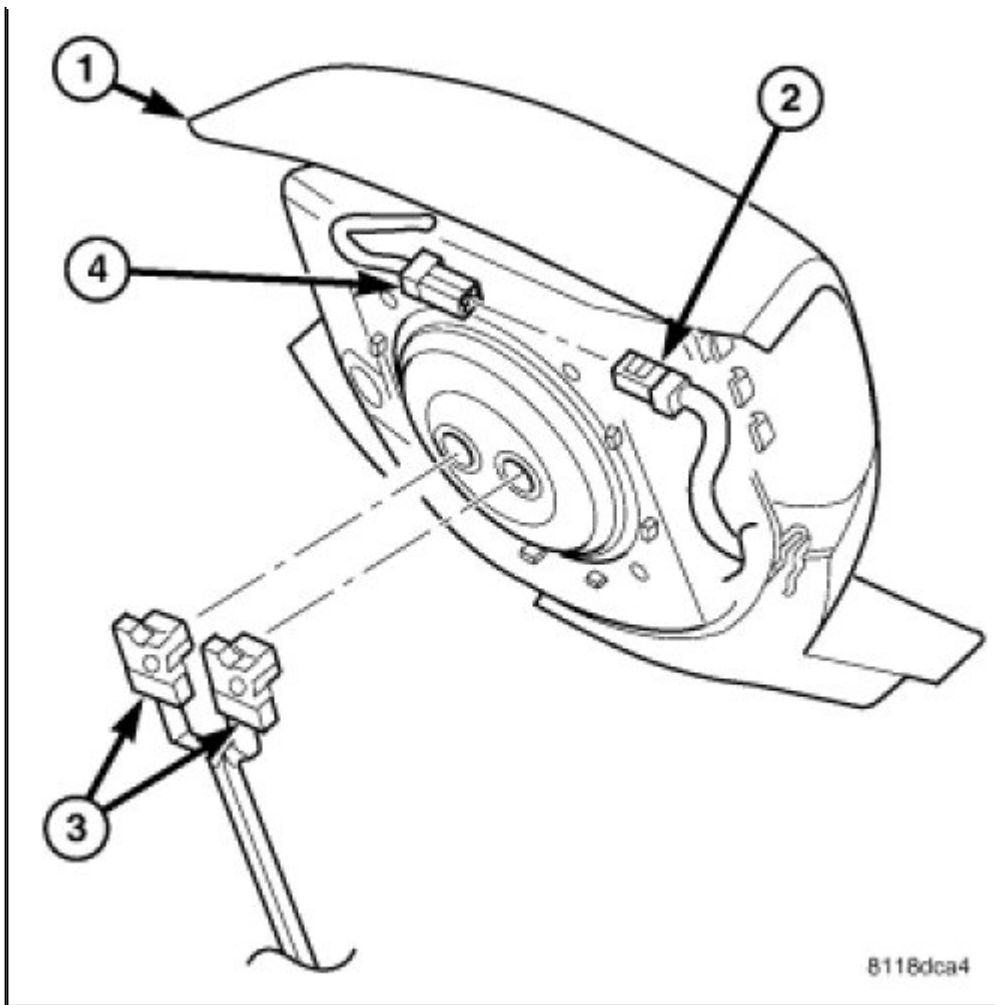
NOTE: The following procedure is for replacement of an ineffective or damaged driver airbag. If the airbag is ineffective or damaged, but not deployed, review the recommended procedures for handling non-deployed supplemental restraints. If the driver airbag has been deployed, review the recommended procedures for service after a supplemental restraint deployment before removing the airbag from the vehicle.



[Zoom](#)[Sized for Print](#)

1. Disconnect and isolate the battery negative cable. Wait **two minutes** for the system capacitor to discharge before further service.
2. From the underside of the steering wheel, remove the two screws (3) that secure the driver airbag (1) to the steering wheel armature (2).



[Zoom](#)[Sized for Print](#)

CAUTION: Do not pull on the horn switch feed pigtail wire to disengage the connector from the driver airbag housing or to disconnect the horn switch to steering wheel wire harness connection. Improper pulling on this pigtail wire or connection can result in damage to the horn switch membrane or feed circuit.

3. Pull the driver airbag (1) away from the steering wheel far enough to access the three electrical connections on the back of the airbag housing.
4. Disconnect the steering wheel wire harness connector for the horn switch (2) from the horn switch feed pigtail wire connector (4), which is located on the back of the driver airbag housing.

CAUTION: Do not pull on the clockspring pigtail wires or pry on the connector insulator to disengage the connector from the driver airbag inflator connector receptacle. Improper removal of these pigtail wires and their connector insulators can result in damage to the airbag circuits or connector insulators.

5. The clockspring driver airbag pigtail wire connectors (3) are secured by integral latches to the airbag inflator connector receptacles, which are located on the back of the driver airbag housing. Depress the latches on each side of the connector insulator and pull the insulators straight out from the airbag inflator to disconnect them from the connector receptacles.
6. Remove the driver airbag from the steering wheel.
7. If the driver airbag has been deployed, the clockspring must be replaced.

© 2010 ALLDATA LLC. All rights reserved.

[Terms of Use](#)