

Previously, if the turn signal lamps would not flash due to a problem with the sensing/timing circuit within the lightbar, it was necessary to replace the lightbar.

The turn signal system functions as follows (see Fig. 1). The turn signal sensing/timing is controlled by the VIGIL or Kysor VIP lightbar. Whenever the turn signal switch is actuated, wire 60 (left turn) or 61 (right turn) is connected to wire 314/350. When the lightbar senses this ground path through wire 350, it starts its turn signal timing circuit by grounding wire 326. When wire 326 is grounded, power is sent through the flasher relay (wire 314) to the turn signal switch and out to the turn signal lamps. This continues until the turn signal switch is released.

If the lightbar is the cause of inoperative turn signals, the affected circuit can now be repaired without replacing the lightbar.

To do this repair, order the parts listed in the Table below.

Description	Part Number	Qty.
Jumper Harness	A06-18781-000	1
Flasher, Solid State	WEI WEF600BR	1
	KYS 1039 07732 01	1

1. Remove the existing flasher relay, BSH 0 332 204 132 from the vehicle electrical panel. The relay panel should be marked "flasher."
2. Install the male terminals of the jumper harness into the flasher relay connector as shown in Fig. 2. Install wire 314 into terminal 87 of the flasher connector. Install wire 37 into terminal 30 of the flasher connector.
3. Install the new solid state flasher at or near the electrical mounting plate.

NOTE: The solid state flasher will be remote-mounted.

4. For the WEI WEF600BR flasher:
 - 4.1 Connect the female terminal of wire 314 to the flasher's male terminal marked "L."
 - 4.2 Connect the female terminal of wire 37 to the flasher's male terminal marked "X."
5. For the KYS 1039 07732 01 flasher:
 - 5.1 Connect the female terminal of wire 314 to the flasher's male terminal marked "FLASH."
 - 5.2 Connect the female terminal of wire 37 to the flasher's male terminal marked "BAT +."
 - 5.3 Connect the flasher ring terminal of the flasher "GND" wire to the flasher mounting bolt.

NOTE: The above procedure is intended as an economical alternative to replacing an entire lightbar in the event of flasher circuitry failure when a vehicle is out of warranty. However, if a vehicle is still under normal warranty (one year or 100,000 miles, whichever occurs first), and the flasher circuitry fails, replace the lightbar. When submitting claims, reference this service bulletin by number.

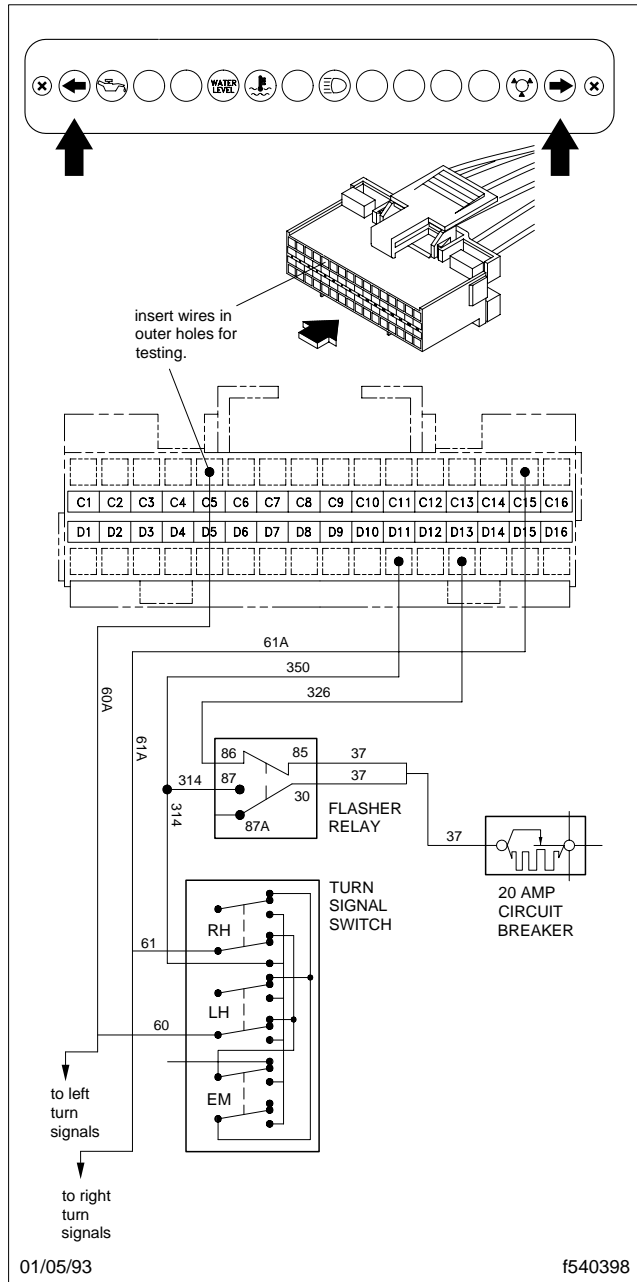


Fig. 1

VIGIL and Kysor VIP Lightbar Turn Signal Wiring

54-26

COE
120 Conventional

> FLA COE
> FLD Conventional

Medium Trucks
> FLC 112 Conventional

**Freightliner
Service Bulletin**

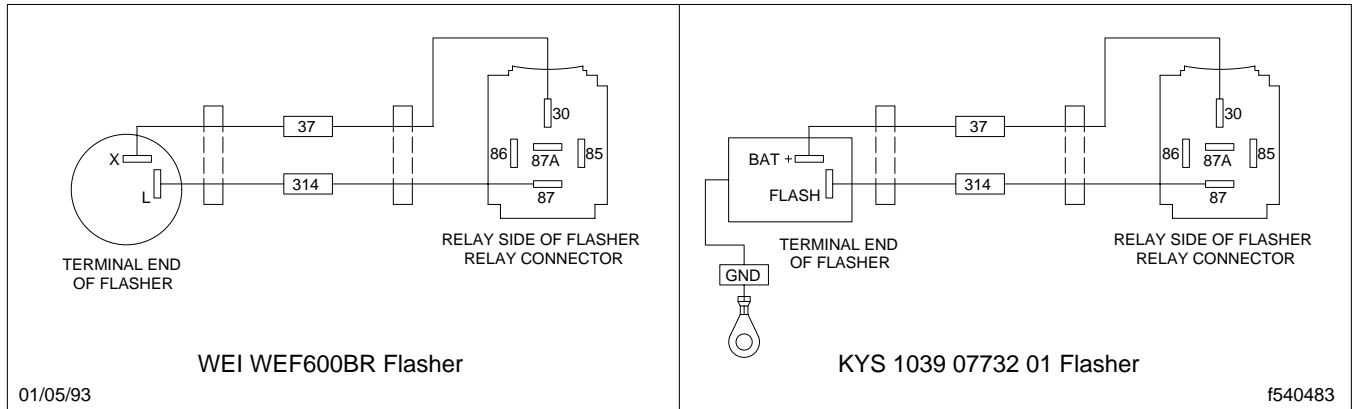


Fig. 2