


## Camshaft Timing Belt

### SPECIAL SERVICE TOOL(S) REQUIRED

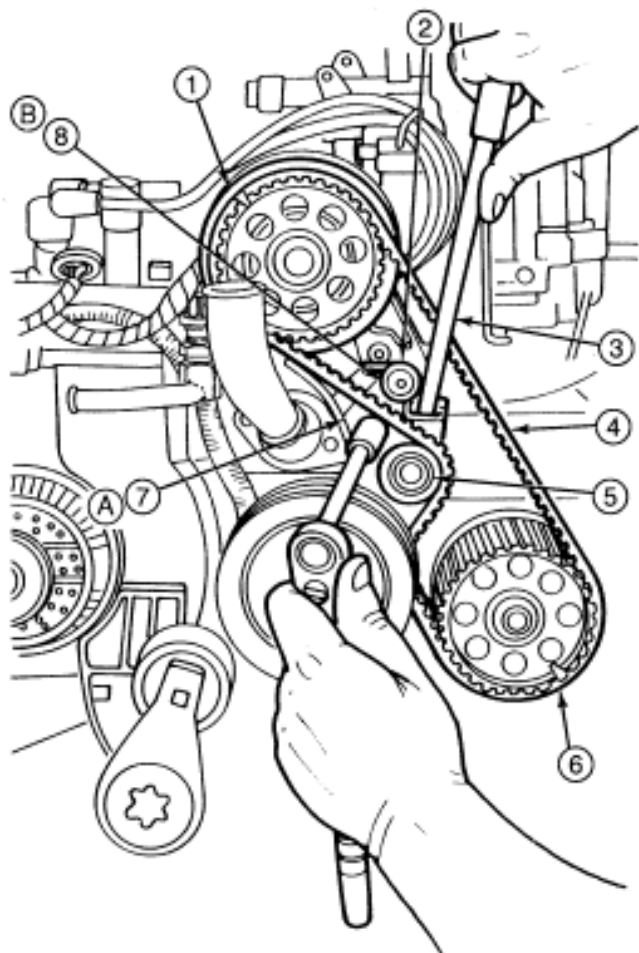
Description	Tool Number
Camshaft Belt Tension Adjusting Tool	T74P-6254-A

## Removal

1. Remove spark plugs (12405).
2. Align crankshaft (6303) so number one piston is at TDC (top dead center) as indicated by timing marks. Refer to illustration.
3. Remove outer timing belt cover as outlined in this section.
4.  **CAUTION: If you attempt to remove timing belt or adjust tension without loosening both timing belt tensioner adjusting bolt and spring pivot bolt, you will break Camshaft Belt Tension Adjusting Tool T74P-6254-A when you attempt to relieve tension on belt.**

Loosen timing belt spring pivot bolt. Do not remove.

5. Hold tensioner with Camshaft Belt Tension Adjusting Tool T74P-6254-A.



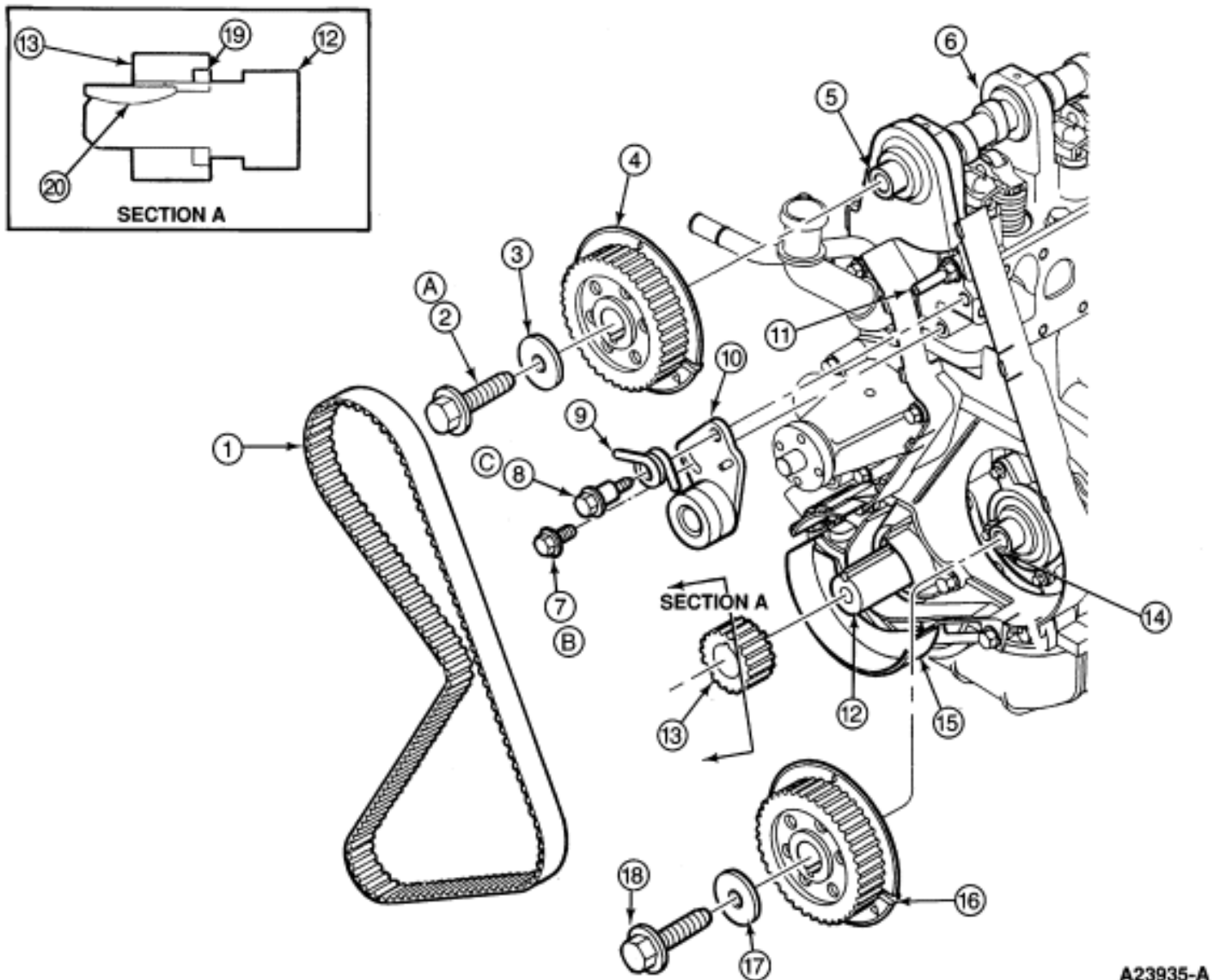
A23934-A

Item	Part Number	Description
1	6256	Camshaft Sprocket (Timing Mark)
2	6L273	Timing Belt Tensioner Spring
3	T74P-6254-A	Camshaft Belt Tension Adjusting Tool
4	6268	Timing Belt
5	6K254	Timing Belt Tensioner
6	6256	Oil Pump Sprocket (Timing Mark)
7	N800112-S100	Tensioner Adjusting Bolt, M8-1.25 x 20 (Under Wrench)
8	6K282	Timing Belt Tensioner (Spring Pivot) Bolt
A	—	Tighten to 35-45 Nm (26-33 Lb-Ft)

B	—	Tighten to 40-55 Nm (30-40 Lb-Ft)
---	---	--------------------------------------

6. While holding tensioner, loosen adjusting bolt and gradually release spring tension.
7. Using adjusting tool, rotate tensioner, against spring pressure, as far clockwise as possible. While holding, tighten adjusting bolt to hold tensioner away from belt.
8. Remove timing belt.

### Camshaft Timing Belt, 2.3L I-4



Item	Part Number	Description
------	-------------	-------------

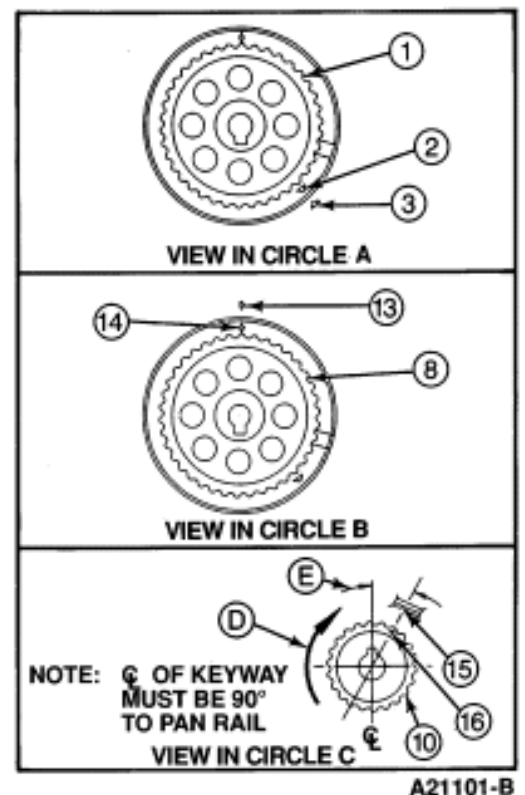
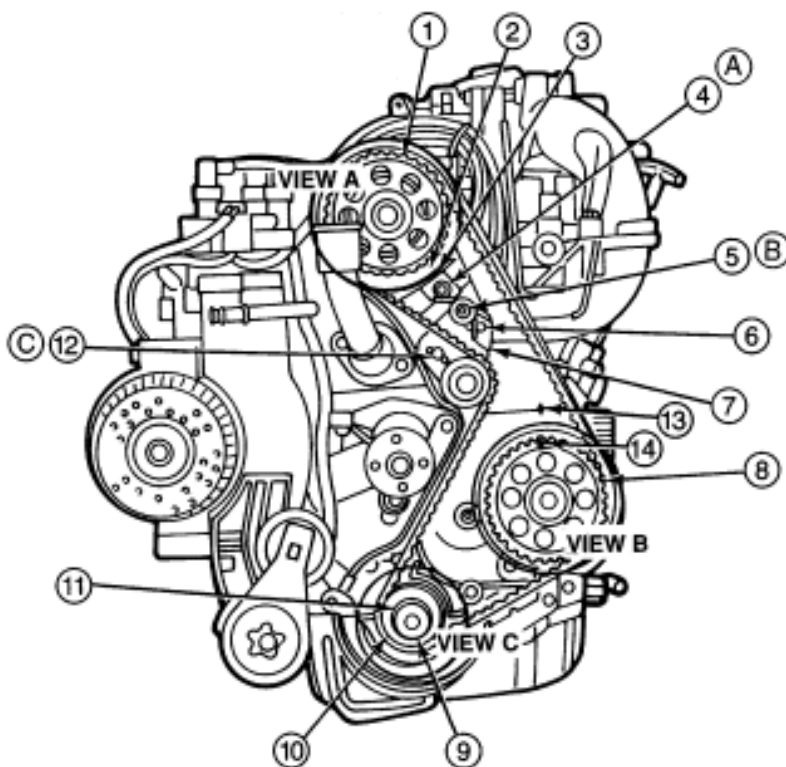
1	6268	Timing Belt
2	N600414-S	Bolt, M12-1.75 x 45
3	6278	Washer
4	6256	Camshaft Sprocket
5	6250	Camshaft
6	6049	Cylinder Head
7	N80012-S100	Bolt, M8-1.25 x 20
8	6K282	Timing Belt Tensioner Bolt
9	61273	Timing Belt Tensioner Spring
10	6K254	Belt Tensioner Assembly
11	—	Stud (Part of 6049)
12	6303	Crankshaft
13	6306	Crankshaft Sprocket
14	6600	Oil Pump
15	6E005	Inner Timing Belt Cover
16	6256	Oil Pump Sprocket
17	—	Washer (Part of N600313-S2)
18	N600313-S2	Bolt, M10-1.5 x 40
19	—	Recess (Part of 6306)
20	—	Crankshaft Keyway
A	—	Tighten to 70-95 Nm (51-70 Lb-Ft) (See Text)
B	—	Tighten to 35-45 Nm (25-33 Lb-Ft) (See Text)
C	—	Tighten to 40-55 Nm (30-40 Lb-Ft) (See Text)

## Installation

**NOTE: Care must be taken during timing belt installation to prevent damage to the inner timing cover.**

1. If not done:
  - a. Loosen tensioner adjusting bolt.
  - b. Using Camshaft Belt Tension Adjusting Tool T74P-6254-A, pry tensioner clockwise against spring tension as far as possible.
  - c. Tighten adjusting bolt to hold tensioner in released position.
2. Align crankshaft so number one piston is at TDC (top dead center) with crankshaft key pointing straight up and circle on crankshaft sprocket (6306) aligned with notch in engine front cover (6019).
3. Align triangle on camshaft sprocket with triangle on inner timing belt cover.
4. Align diamond on oil pump sprocket with diamond on inner timing belt cover.

### Timing Mark Alignment



Item	Part Number	Description
1	6256	Camshaft Sprocket

2	—	Pointer Triangle (Part of Camshaft Sprocket)
3	—	Pointer Triangle (on Inner Timing Belt Cover)
4	N801658-S	Stud, M8 x 1.25
5	6K282	Spring Pivot Bolt
6	—	Stud (Part of 6K254)
7	6K254	Timing Belt Tensioner
8	6256	Oil Pump Sprocket
9	6303	Crankshaft
10	6306	Crankshaft Sprocket
11	N806700-S	Key
12	N800112-S2	Adjusting Bolt, M8-1.25 x 20
13	—	Pointer Diamond (on Inner Timing Belt Cover)
14	—	Pointer Diamond (on Oil Pump Sprocket)
15	—	Pointer Line (Part of 6019)
16	—	Pointer Circle (on 6306)
A	—	Tighten to 20-30 Nm (15-22 Lb-Ft) (See Text)
B	—	Tighten to 40-55 Nm (30-40 Lb-Ft) (See Text)
C	—	Tighten to 35-45 Nm (26-33 Lb-Ft) (See Text)
D	—	Direction of Rotation
E	—	29°

5. Install timing belt over crankshaft sprocket. Then, proceeding counterclockwise, over oil pump sprocket and camshaft sprocket.
6. Loosen tensioner adjusting bolt allowing tensioner pulley to press against timing belt.
7. **NOTE: When performing the following step, do not rotate crankshaft**

**counterclockwise as timing belt may jump a cog, putting camshaft or camshaft position sensor on oil pump out of time.**

Rotate crankshaft two revolutions clockwise.

8. Bring crankshaft slowly, without stopping, to number one cylinder firing position (keyway directly up).
9. Recheck timing mark alignment. Repeat steps if timing marks are not properly aligned.
10. Rotate tensioner assembly against belt with torque wrench up to 41-45 Nm (30-33 lb-ft) and tighten adjusting bolt.
11. Tighten adjusting bolt to 35-45 Nm (26-33 lb-ft).
12. Tighten spring pivot bolt to 40-55 Nm (30-40 lb-ft).
13. Install outer timing belt cover as outlined in this section.