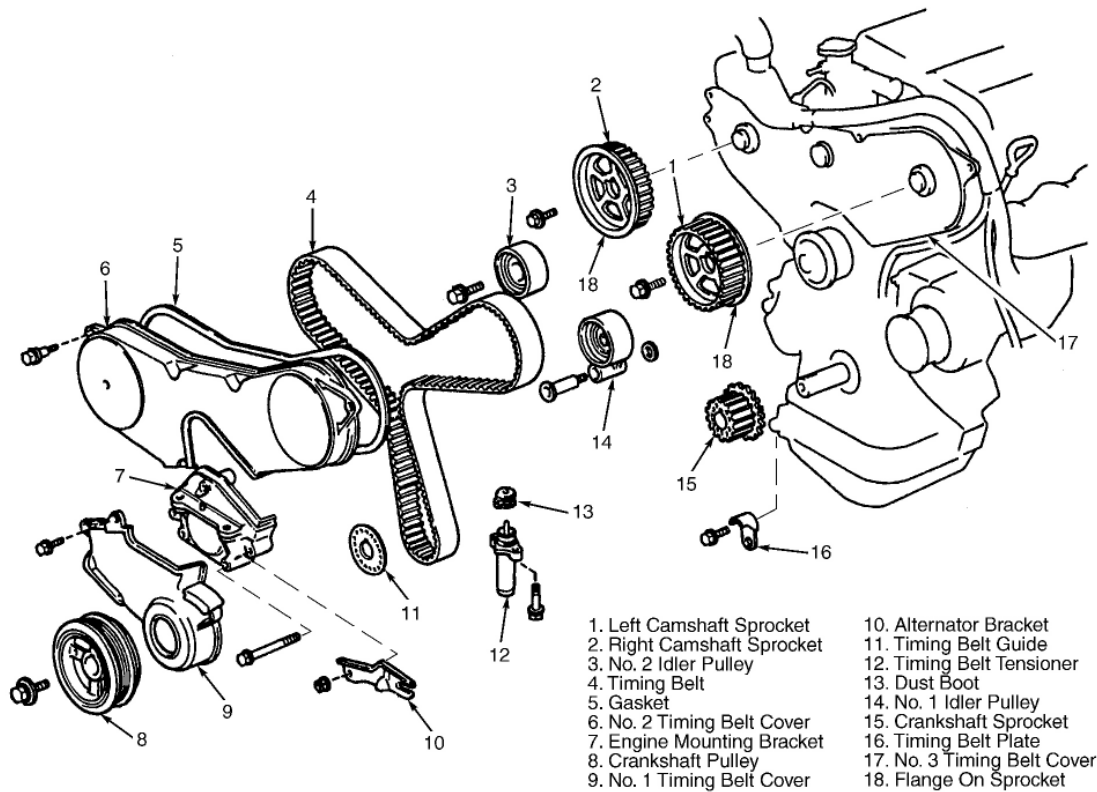


1996 Toyota Avalon XL

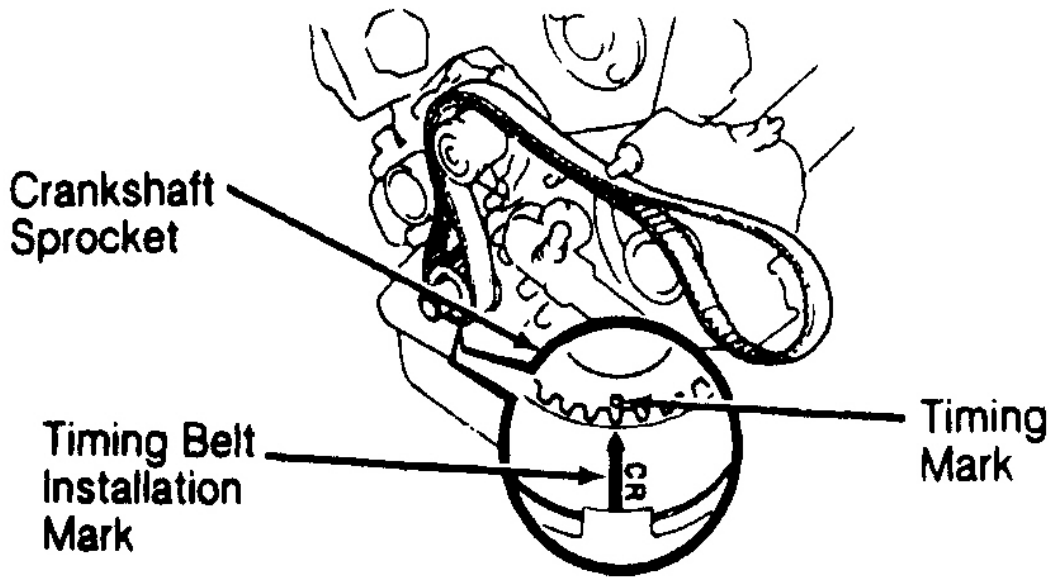
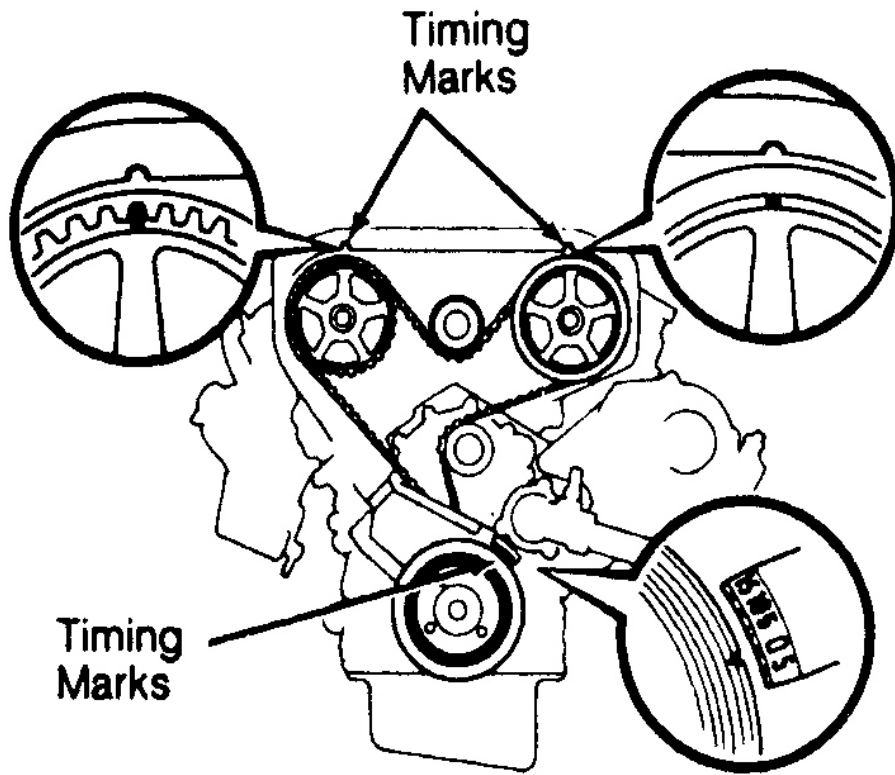
TOYOTA 2.5L & 3.0L V6 - DOHC - 1988-97



G94G46330

Fig. 1: Exploded View Of Timing Belt & Components

Courtesy of TOYOTA MOTOR SALES, U.S.A., INC.



G92G01168

Fig. 2: Aligning Timing Marks (2.5L & 1992-93 3.0L)

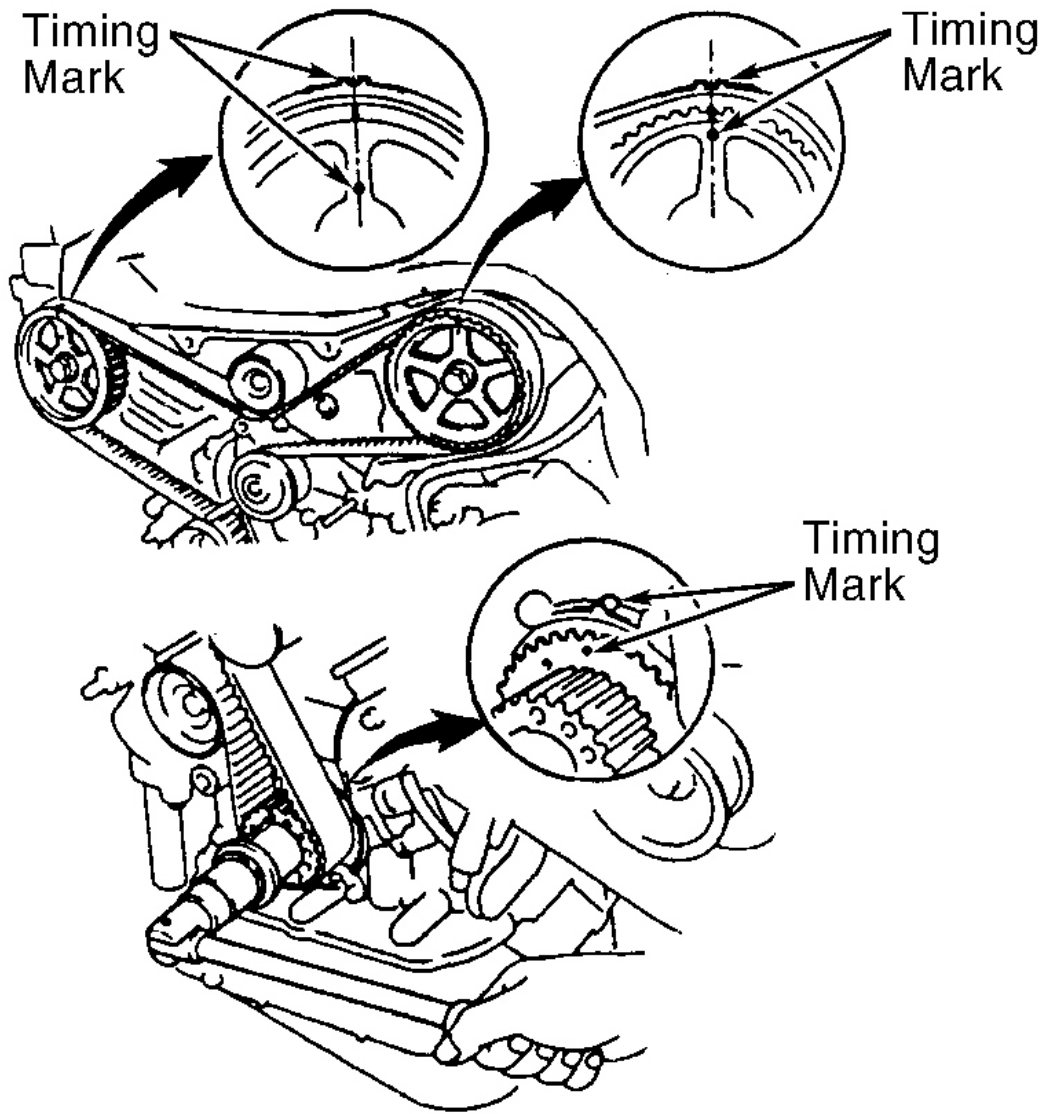
Courtesy of TOYOTA MOTOR SALES, U.S.A., INC.

Removal (1994-97 3.0L V6)

1. Disconnect negative battery cable. Remove coolant reservoir. Raise and support vehicle. Remove right side front wheel. Remove right lower engine cover. Remove accessory drive belts.
2. Remove engine stabilizer rod, engine mounting bracket and right engine mount brace, located near timing belt cover. Remove the alternator bracket for access to timing belt covers. Remove No. 2 timing belt cover. See **Fig. 1**.
3. Use Pulley Holder (09213-54015) or equivalent and Holder (09330-00021) to hold crankshaft pulley. Remove crankshaft pulley bolt. Using puller, remove crankshaft pulley. Remove No. 1 timing belt cover.
4. Remove engine mounting bracket. Note direction of timing belt guide installation for reassembly reference. Remove timing belt guide.
5. Temporarily install crankshaft pulley bolt in crankshaft. Using crankshaft pulley bolt, rotate crankshaft clockwise until timing mark on crankshaft sprocket aligns with timing mark on oil pump body. See **Fig. 3**. Ensure timing marks on camshaft sprockets are aligned with timing mark on No. 3 timing belt cover. See **Fig. 3**. If timing marks are not aligned, rotate crankshaft clockwise one full revolution (360 degrees).

CAUTION: If reusing timing belt, ensure 3 reference marks and front mark are on timing belt. See Fig. 4. If reference marks or front mark are not apparent, place reference mark on timing belt at timing mark area on camshaft sprockets or dot area on crankshaft sprocket for reassembly reference. Place front mark on timing belt to indicate direction of timing belt installation.

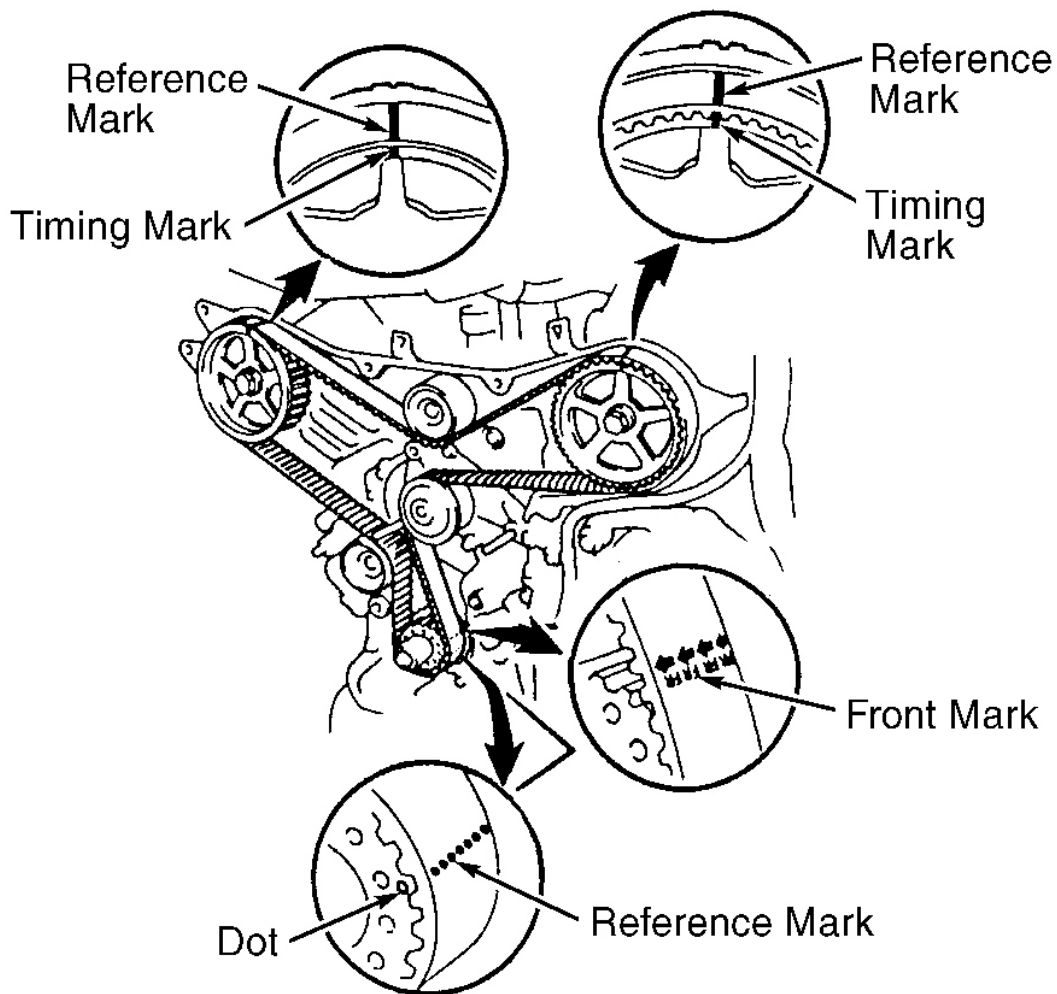
6. Remove retaining bolts, timing belt tensioner and dust boot. Remove crankshaft pulley bolt from crankshaft. Install Camshaft Sprocket Holder (09960-10010) or equivalent, in holes on front of right camshaft sprocket. Slightly rotate right camshaft sprocket clockwise to release tension on timing belt between camshaft sprockets. Remove timing belt from camshaft sprockets. Remove idler pulleys (if necessary).
7. If removing camshaft sprocket, use Camshaft Sprocket Holder (09960-10010) to hold camshaft sprocket. On right camshaft sprocket, Adapter (09249-63010) must also be used. Remove bolt and camshaft sprocket.
8. If removing crankshaft sprocket, remove timing belt plate. See **Fig. 1**. Using Crankshaft Sprocket Puller (09213-60017), remove crankshaft sprocket.



G94H46331

Fig. 3: Aligning Timing Marks (1994-97 3.0L)

Courtesy of TOYOTA MOTOR SALES, U.S.A., INC.



G94I46332

Fig. 4: Identifying Timing Belt Reference Marks (1994-97 3.0L)

Courtesy of TOYOTA MOTOR SALES, U.S.A., INC