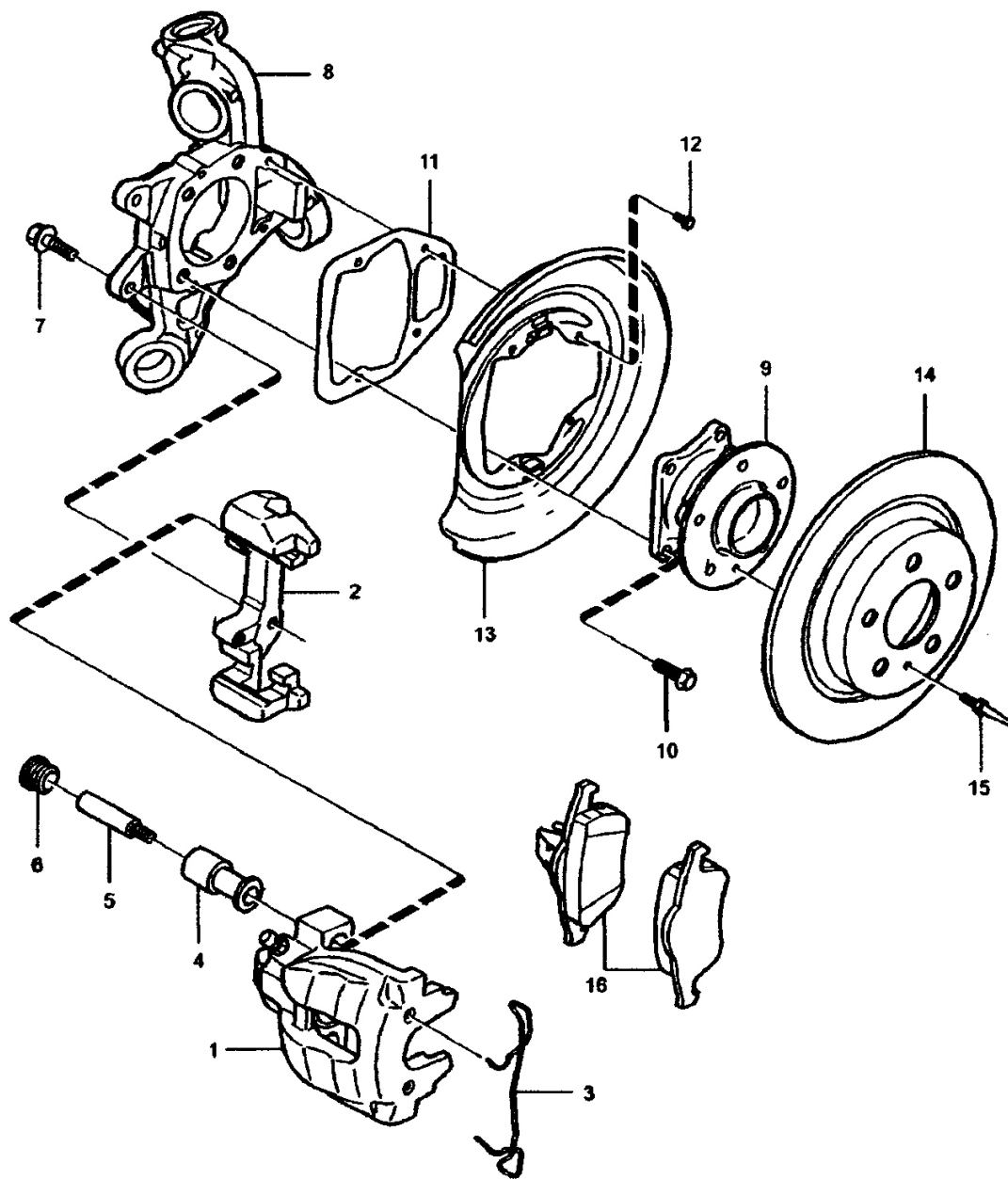


**Removal**

1. Remove the securing spring (3) carefully so that it does not deform. See [Fig. 49](#) .
2. Remove the protective caps (1) from the two locating pins (2). See [Fig. 49](#) .
3. Remove the locating pins using a 7 mm hex socket.
4. Remove the brake caliper from the holder.
5. Remove the brake pads. See [Fig. 50](#) .

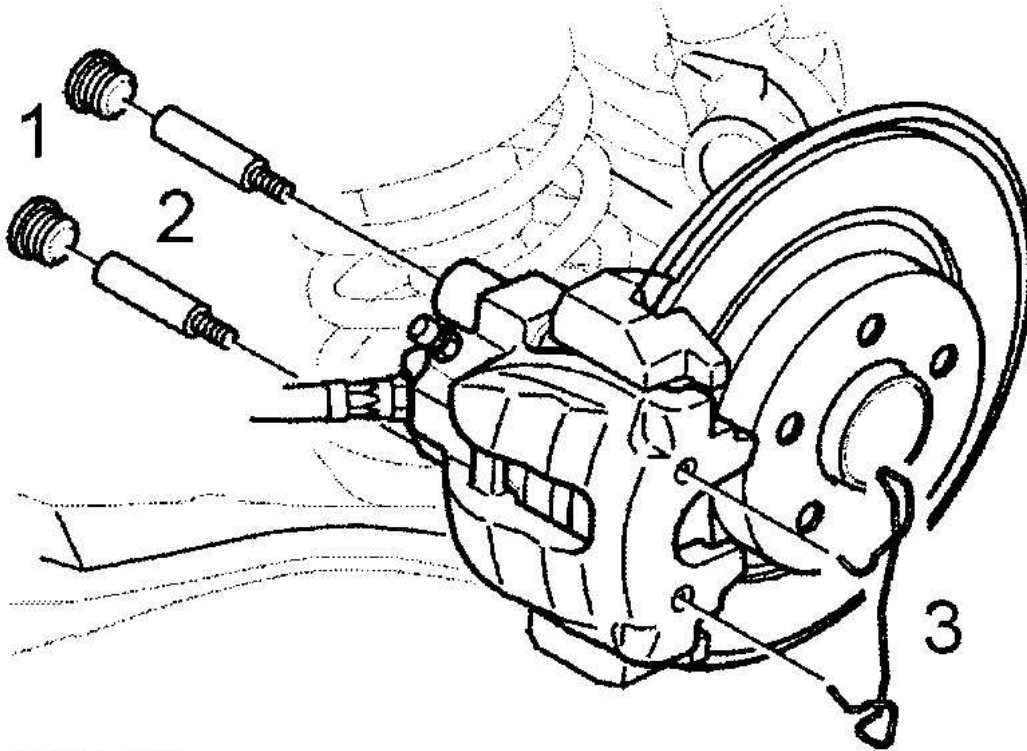


- |                     |                    |                      |
|---------------------|--------------------|----------------------|
| 1. Brake Caliper    | 7. Bolt            | 12. Bolt             |
| 2. Brace            | 8. Bearing Housing | 13. Protecting Plate |
| 3. Spring           | 9. Rear Wheel Hub  | 14. Brake Disc       |
| 4. Bushing          | 10. Bolt           | 15. Guide Pin        |
| 5. Guide Pin        | 11. Gasket         | 16. Brake Pad Kit    |
| 6. Protecting Cover |                    |                      |

G00280603

**Fig. 48: Exploded View Of Rear Brake System**

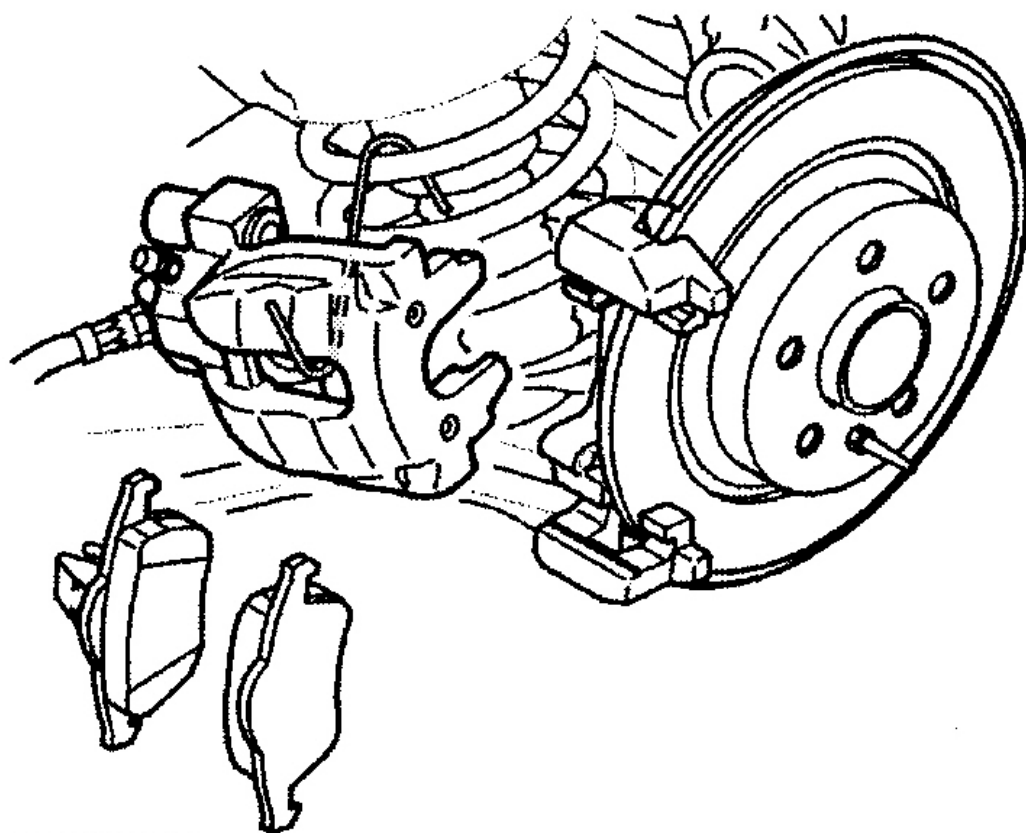
Courtesy of VOLVO CARS OF NORTH AMERICA.



G00216295

**Fig. 49: Removing Securing Spring, Caps & Pins - Rear Brakes**

Courtesy of VOLVO CARS OF NORTH AMERICA.



G00216296

**Fig. 50: Removing Rear Brake Pads**

Courtesy of VOLVO CARS OF NORTH AMERICA.

**Inspection**

**NOTE:** If the dust boot is damaged, dirt may have penetrated the cylinder. The brake caliper must be rebuilt.

- Clean and check brake pad mating surfaces on the brake caliper.
- Check piston dust boot. Replace it if it is damaged.
- Check brake disc friction surfaces. If the brake disc displays signs of out-of-true, check its lateral run-out. See **MEASURING LATERAL RUN-OUT** under INSPECTION.
- Replace brake disc if it displays signs of heavy wear, variable thickness or similar.
- Measure brake disc for minimum thickness and check against specifications. See **DISC BRAKE SPECIFICATIONS**.

**Installation**

1. Press piston back into cylinder on brake caliper. Check that the dust cover is correctly positioned.
2. Install new brake pads. See [Fig. 50](#) .
3. Install the brake caliper. See [Fig. 50](#) .
4. Install the rubber sleeves of the locating pins. Replace if necessary.
5. Lubricate the locating pins with grease. Insert the locating pins (2) into the rubber sleeves. See [Fig. 49](#) . The pins should slide into the sleeves easily.
6. Tighten locating pins to specification. See [TORQUE SPECIFICATIONS](#) .
7. Install protective caps (1). See [Fig. 49](#) .
8. Install retaining spring (3). See [Fig. 49](#) .
9. Depress brake pedal a few times. Top off brake fluid if necessary. Adjust parking brake as required. See [PARKING/EMERGENCY BRAKE](#) under ADJUSTMENTS.
10. Install wheels and tighten to specification. See [TORQUE SPECIFICATIONS](#)