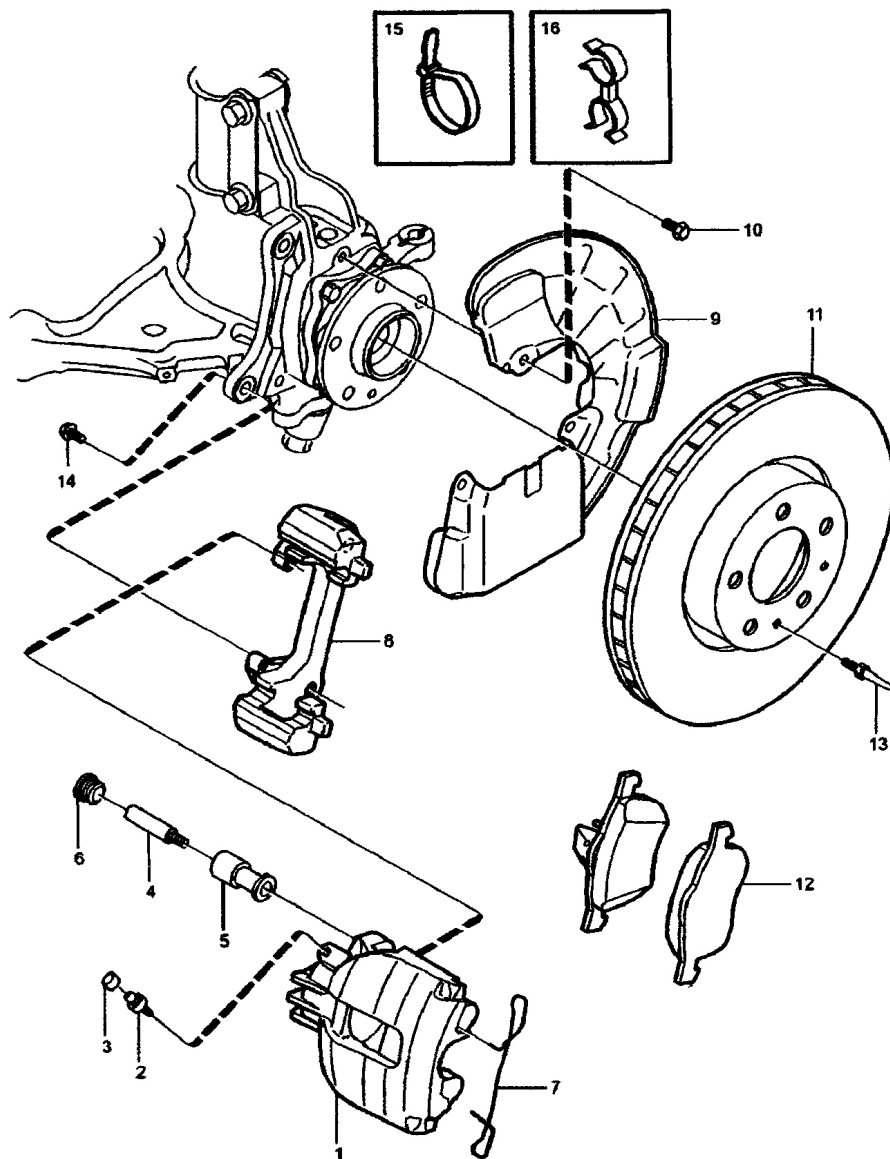


Removal

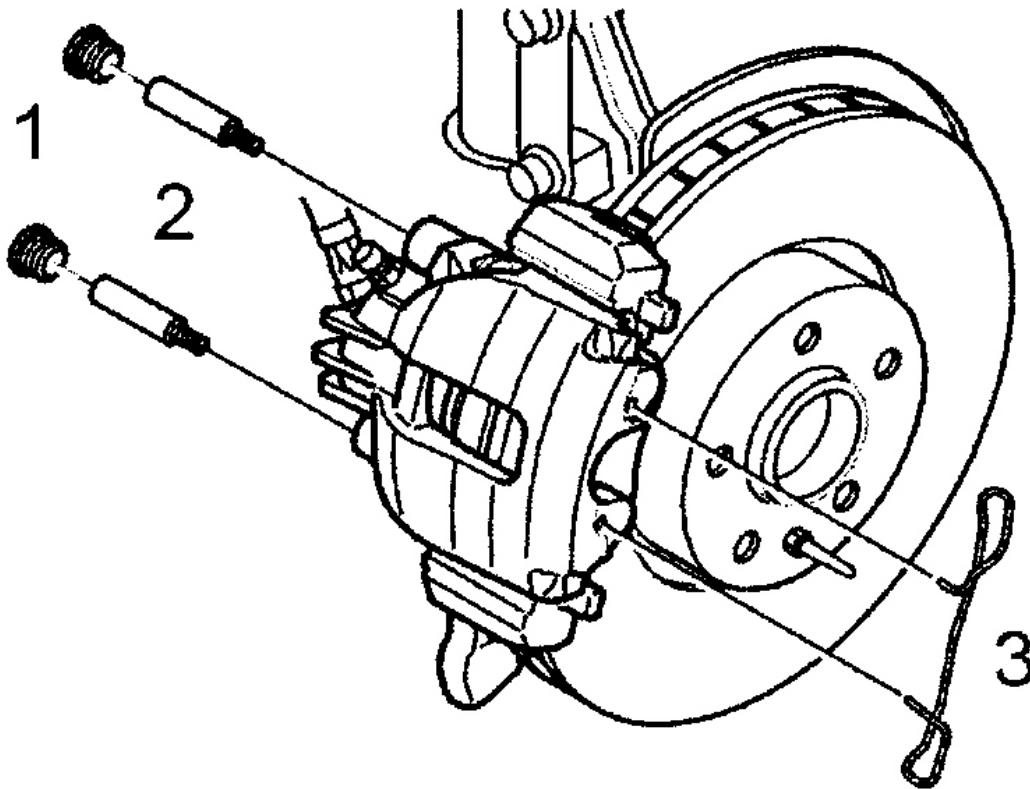
1. Raise and support vehicle. Remove wheel to be serviced.
2. Remove the securing spring (3) carefully so that it does not deform. See **Fig. 21** .
3. Remove the protective caps (1) from the two locating pins (2). See **Fig. 21** .
4. Remove the locating pins by using a 7 mm hex socket.
5. Remove the brake caliper from the holder. Hang brake caliper from a safety wire from the front spring so as not to damage brake hose. Remove the brake pads.



- | | |
|---------------------|---------------------|
| 1. Brake Caliper | 9. Protecting Plate |
| 2. Bleeder Screw | 10. Bolt |
| 3. Protection | 11. Brake Disc |
| 4. Guide Pin | 12. Brake Pad |
| 5. Bushing | 13. Guide Pin |
| 6. Protecting Cover | 14. Bolt |
| 7. Spring | 15. Cable Tie |
| 8. Brace | 16. Retainer |

G00280602

Fig. 20: Exploded View Of Front Brake System
 Courtesy of VOLVO CARS OF NORTH AMERICA.



G00216291

Fig. 21: Removing Securing Spring & Locating Pins - Front Brakes

Courtesy of VOLVO CARS OF NORTH AMERICA.

Inspection

NOTE: If dust boot is damaged, dirt may have penetrated the cylinder, therefore the brake caliper must be reconditioned.

- Clean and check brake pad mating surfaces in the brake caliper and caliper holder.
- Check piston dust boot. Replace dust boot if it is damaged.
- Check the brake disc friction surfaces. If the brake disc displays signs of out-of-true, check its lateral run-out. See **MEASURING LATERAL RUN-OUT** under INSPECTION.
- Replace the disc if it displays signs of heavy wear, variable thickness or similar.
- Measure brake disc for minimum thickness and check against specifications. See **DISC BRAKE SPECIFICATIONS** .

Installation

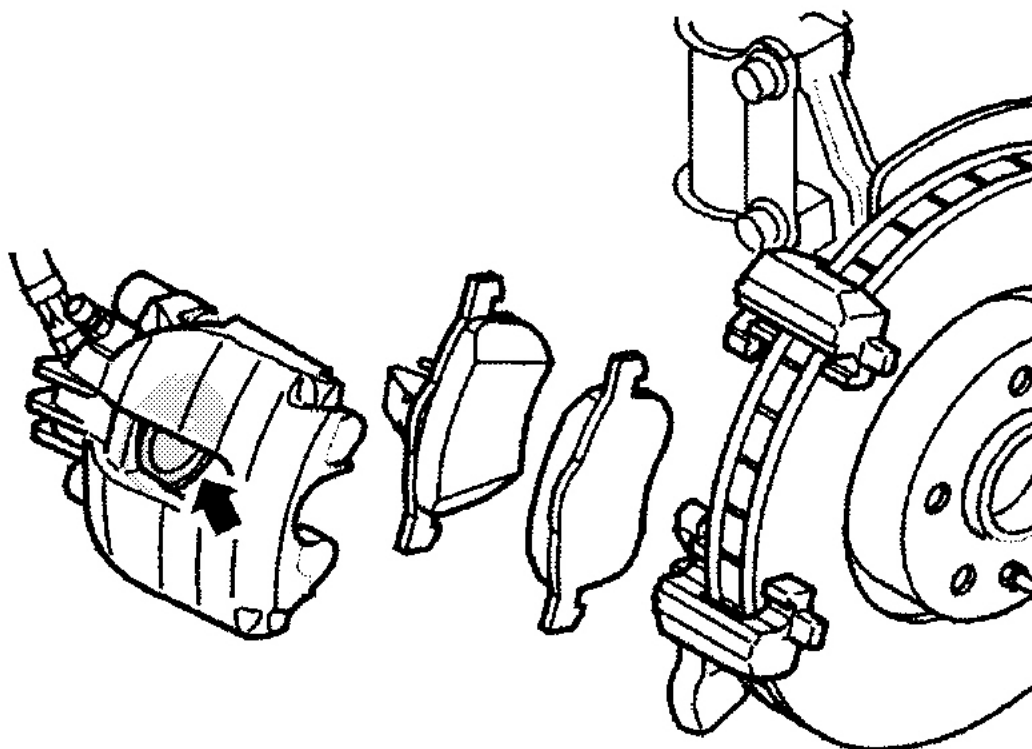
many waters gallery

Friday, January 30, 2009 5:07:10 PM

Page 3

© 2005 Mitchell Repair Information Company, LLC.

1. Press the piston back into cylinder on brake caliper. Check that the dust cover is correctly positioned.
2. Install new brake pads. See **Fig. 22** .



G00216292

Fig. 22: Installing Front Brake Pads
Courtesy of VOLVO CARS OF NORTH AMERICA.

3. Install the brake caliper.
4. Check the rubber sleeves of the locating pins. Replace if necessary.
5. Lubricate the locating pins (2) with grease(part no. 1161325-4, or equivalent). Insert the locating pins into the rubber sleeves. The pins should slide into the sleeves easily. See **Fig. 21** .
6. Tighten locating pins to specification. See **TORQUE SPECIFICATIONS** . Install the protective caps (1). See **Fig. 21** .
7. Install the retaining spring (3). See **Fig. 21** .
8. Depress the brake pedal a few times. Check the level of the brake fluid reservoir. Top off if necessary.
9. Install wheels and tighten to specification. See **TORQUE SPECIFICATIONS**