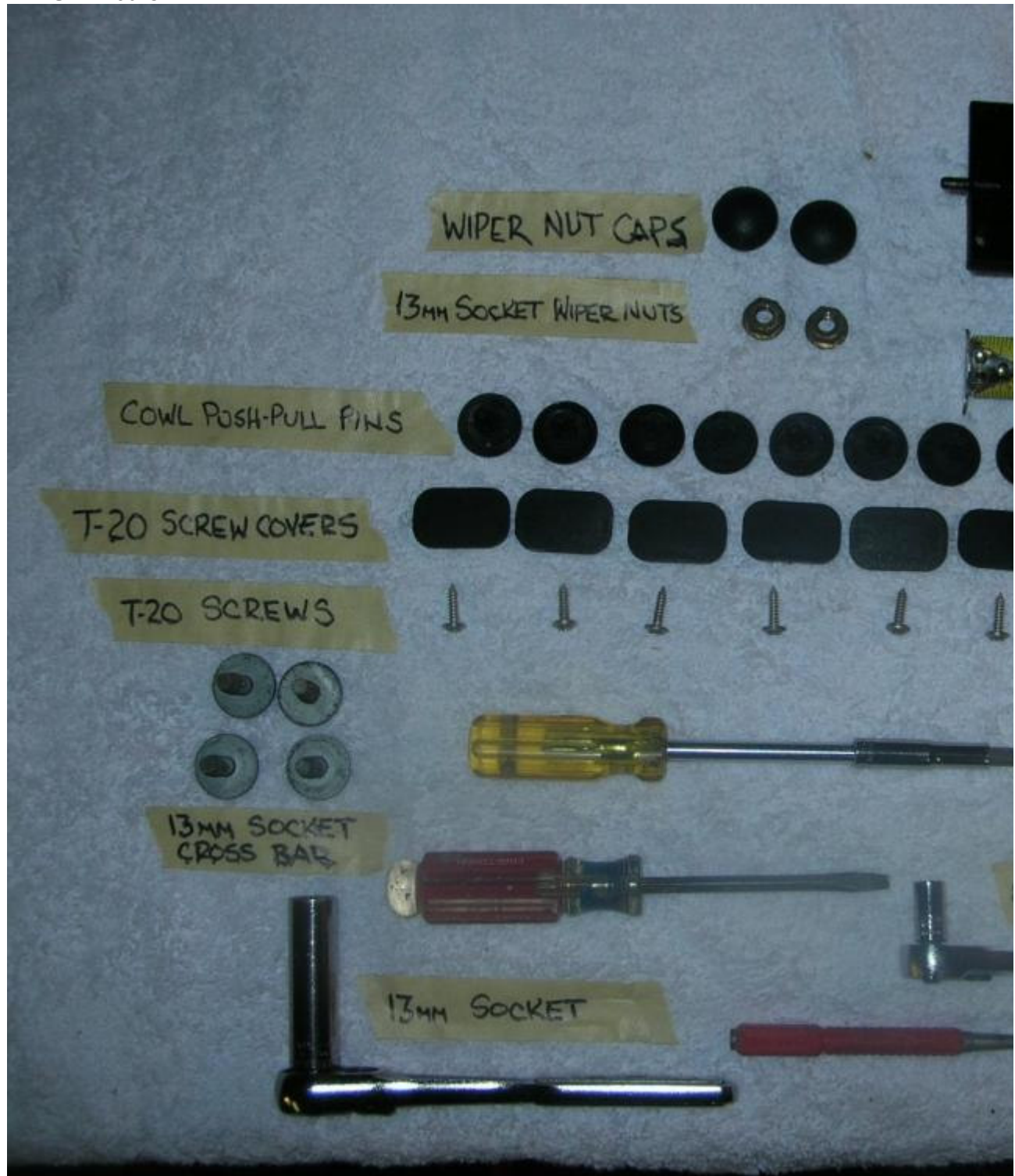


Difficulty level: moderate

Tools needed: flat screw driver, 8mm socket (1/4" drive helps), 13mm socket, T20 torx bit, sr
Optional tools: 8mm wrench, can of carb cleaner, awl (small pointy instrument), nail set, shop v

Time: 2 hours



This procedure was done on a 2005 3.0

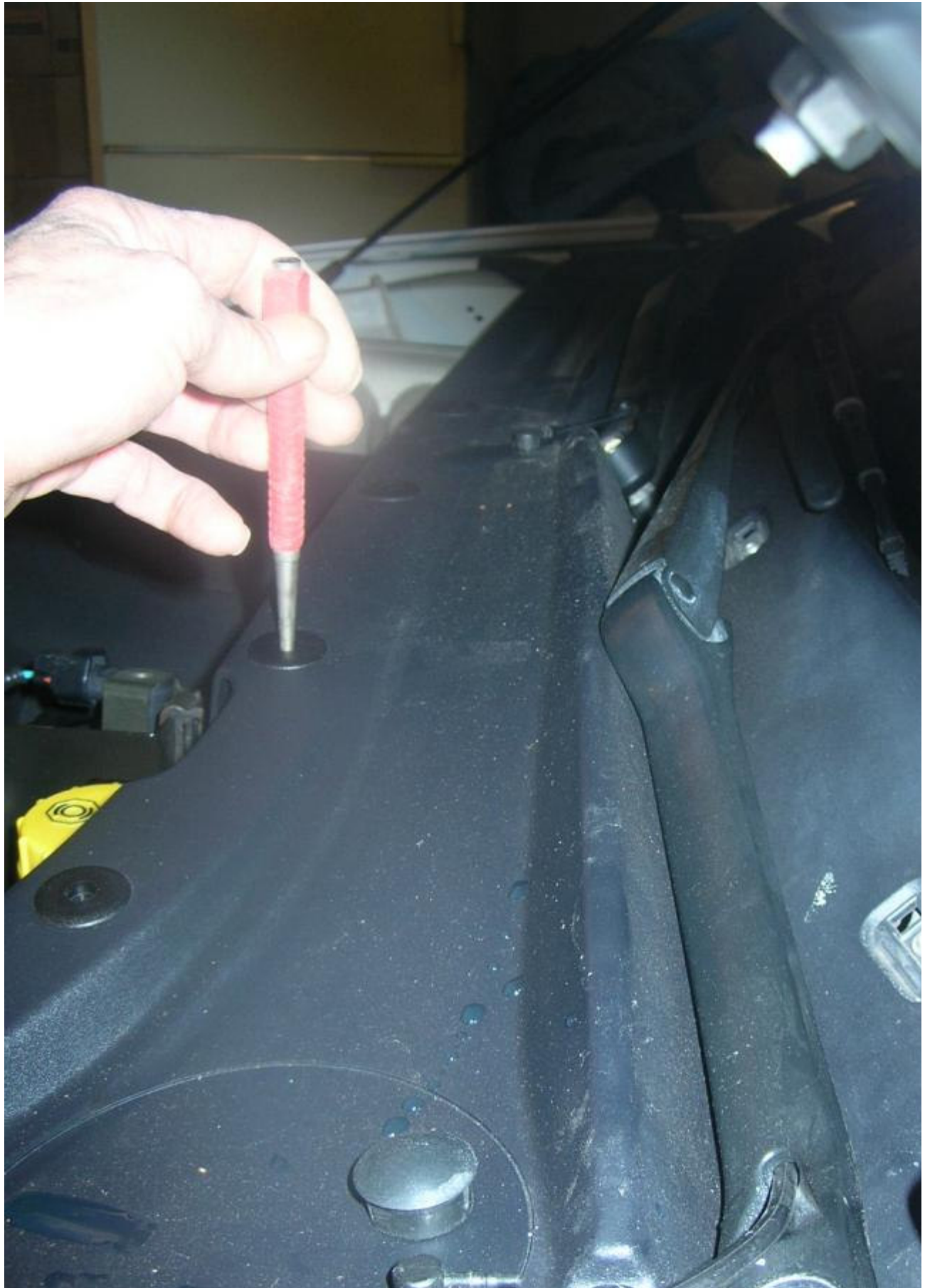
First start off start with removing wiper arms:

Disconnect wiper washer supply lines, being **very** careful not to snap off nipples!
Remove wiper arm 13mm (socket) nut covers, loosen nuts to top of stud. Grab hold of wiper arm with small hammer (arm assembly should "pop" on third hit). DO NOT remove nut then strike anything else is down hill. If not have someone else do the replacement.









Using "optional" nail set, push down on center push/pull pin on front cowl (8 pieces). Using flat bar (To reinstall these, push the pin from the underside up so it protrudes the top of its washer).

Remove (7) rear cowl T20 screw covers and screws. You are now able to slide cowl cover away underneath cowl, it has a lot of play to just set over front of engine bay.

Optional use vacuum to suck up what appears to be paper fiber insulation under cowl and rear cowl. Take time to clean wiper arm drain as well (drivers side US)

Remove (4) crossbar 13mm (socket) bolts, set bar aside



Now theres a clear but **very tight** view of the IMT tuner valves. Disconnect wire harness using (wrench) remove (2) tuning valve bolts, wiggle valve out of intake manifold. Tricky part now is to get into the engine bay. Lower IMT tuning valve same removal process. There may be as much as a 1/3 cup of carbon cleaner, clean the lower IMT port. Replace yellow IMT O-Ring with new GREEN O-Ring.



Install, reverse procedure. When going this route you cannot properly torque IMT valve bolts. T
cowl, the awl comes in handy to match up the T20 screws.

Words of advise: On the underside of cowl there are thin black washers that hold the T20 screw
not want to loose them. Also note the fins on the underneath cowl these are the washer fluid m



If your vehicle is close to needing spark plugs, then you should consider IMT Replacement "long
*Also now is a good time to replace the cabin/pollen air filter or at least vacuum it out!