



SERVICE BULLETIN

Classification: HA02-003	Reference: NTB02-048	Date: June 12, 2002
-----------------------------	-------------------------	------------------------

2002 ALTIMA; MANUAL A/C TEMPERATURE NOT ADJUSTABLE

- APPLIED VEHICLE:** 2002 Altima (L31) – with Manual A/C ONLY
- APPLIED VIN:** All vehicles built before: 1N4AL11D32C142000
- APPLIED DATE:** All vehicles built before: October 23, 2001

SERVICE INFORMATION

If a 2002 Altima, with manual (non-automatic) A/C, exhibits the following symptoms:

- No heat from vents
- Always discharges cold air
- A/C does not cool
- Temperature cannot be adjusted,

Check to see if the air mix gear door drive gear fell off. (See Figure 1). If the gear is missing, find it (hopefully it's still on the floor). Then re-install it using the Service Procedure on Page 2.

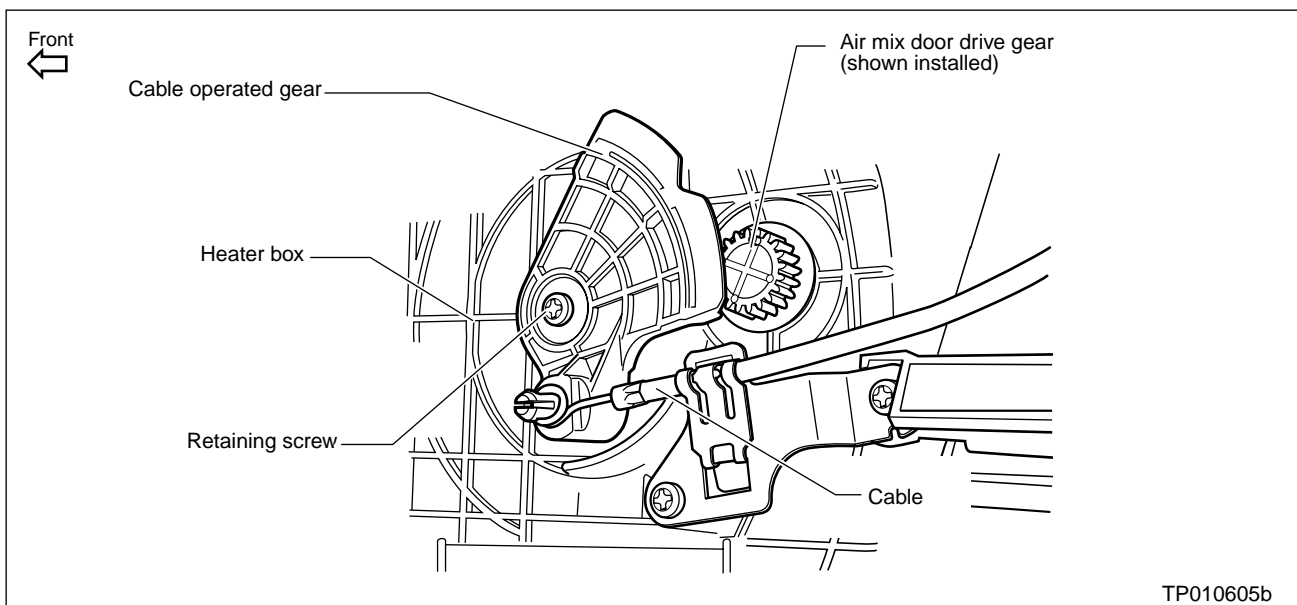


Figure 1

TP010605b

SERVICE PROCEDURE

1. Remove the following components;
 - cluster lid "C" (HVAC control surround trim)
 - fuse box cover
 - driver's side instrument panel lower cover (attached with 2 screws).
2. Remove the screw from the center of the cable operated gear (see Figure 2).

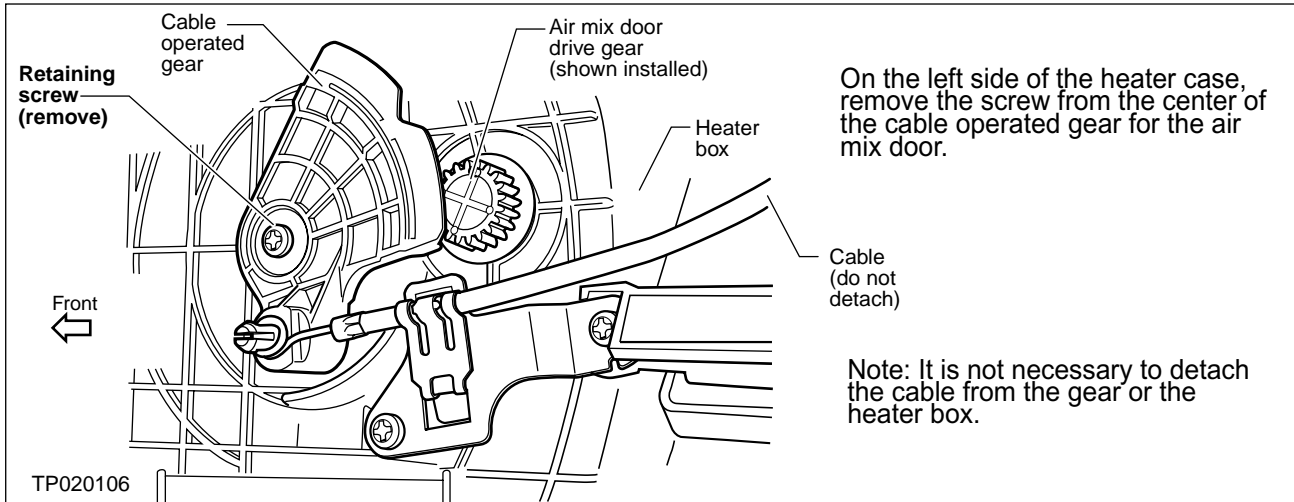


Figure 2

3. Locate the small (about 1" dia.) white air mix door gear. Hopefully it is still on the floor.

NOTE: If you cannot find the old air mix door gear, order a new gear. Refer to the Parts Information section of this bulletin.

4. To see how it is supposed to fit, temporarily install the gear into the air mix door shaft (see Figure 3).

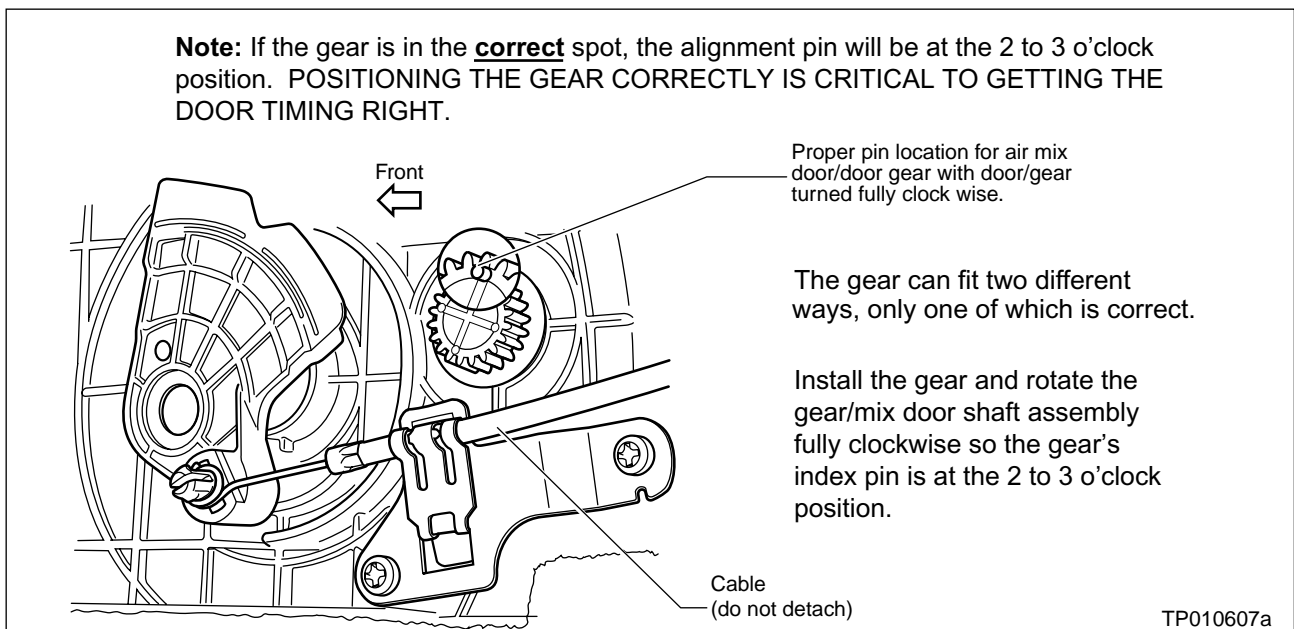


Figure 3

5. Remove the gear, thoroughly clean the gear shaft of any grease, and apply the glue. See Figure 4.

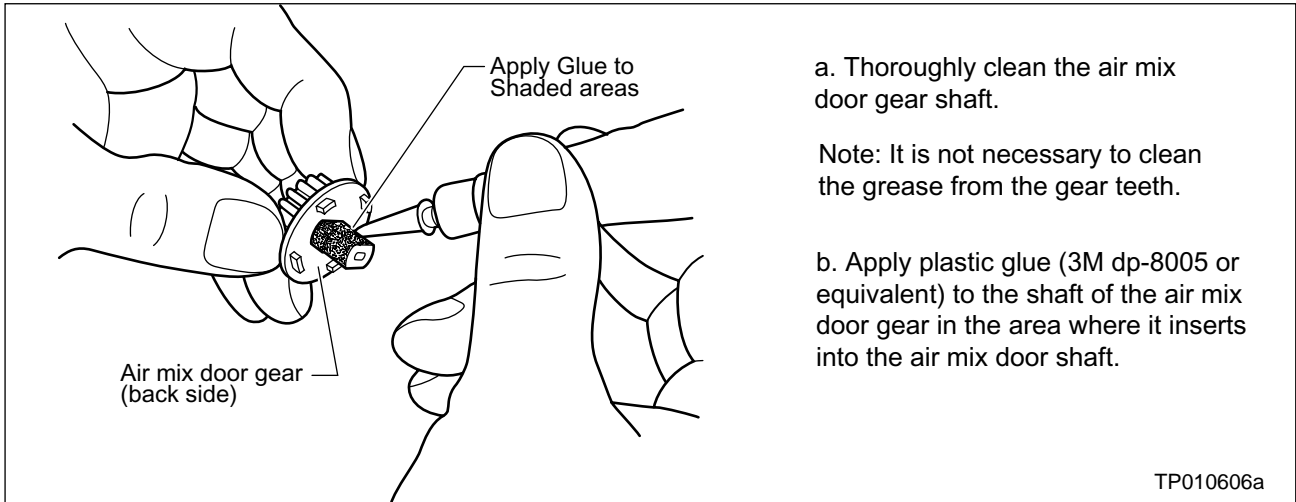


Figure 4

6. Re-install the gear into the mix door shaft (see Figure 5).

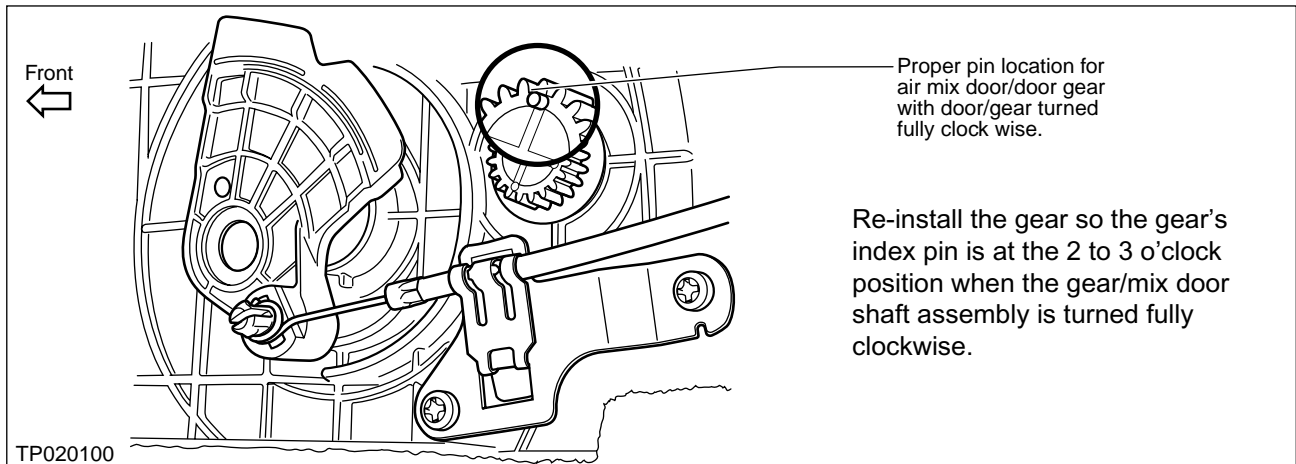


Figure 5

7. Set the HVAC control temperature dial as shown in Figure 6.

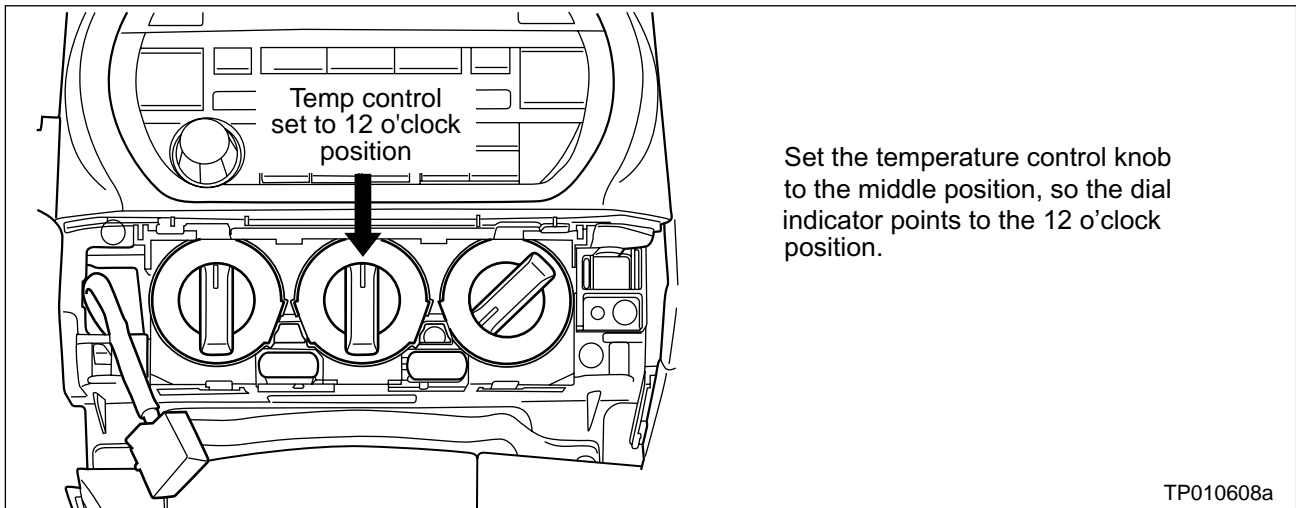


Figure 6

8. Re-install the cable operated gear (see Figure 7).

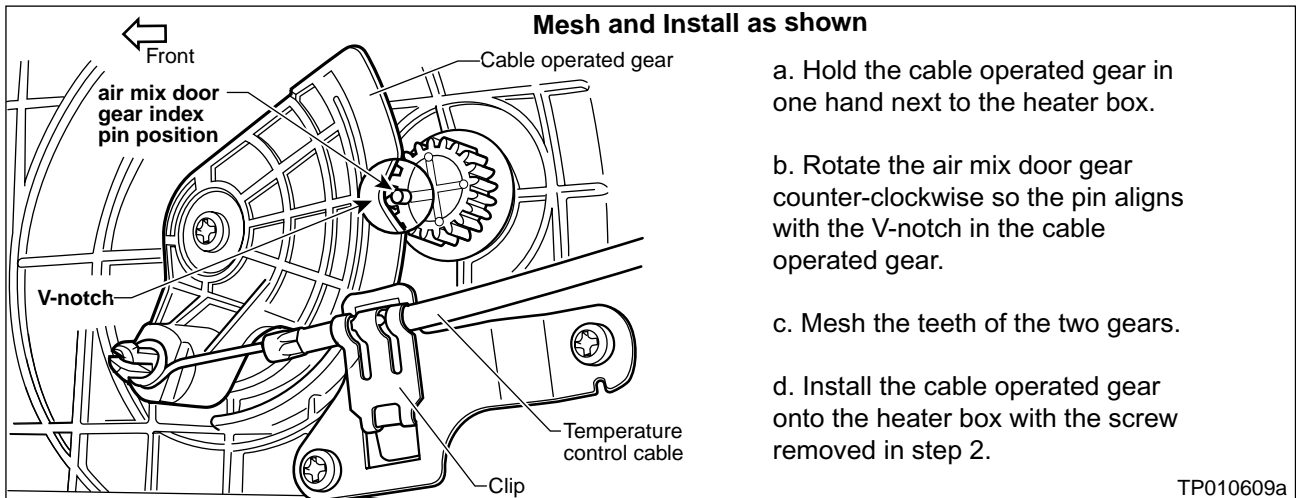


Figure 7

9. Operate the temperature control while watching the air mix door gear movement. They should operate freely with no binding.

10. Check the adjustment of the temperature cable as follows:

- A. Rotate the temperature control knob to the full COLD position (i.e., fully counterclockwise) and confirm the air mix door is fully seated (sealed) in the down position, then
- B. Rotate the temperature control knob to the full HOT position (i.e., fully clockwise) and confirm the air mix door is fully seated (sealed) in the up position.

If the air mix door does not fully seat (seal) in either the full HOT or full COLD position:

- Adjust the temperature control cable, with the temperature control knob in the full hot position, using the clip at the heater unit (see Figure 7)

11. Re-install the trim pieces removed in step 1.

PARTS INFORMATION

DESCRIPTION	PART NUMBER	QUANTITY
Air Mix Door Gear	27153-8J010	1

CLAIMS INFORMATION

Submit a Primary Failed Part (PP) line claim using the following claims coding:

DESCRIPTION	PFP	OP CODE	SYM	DIA	FRT
RPL Air Mix Door Actuator & Power Servo	27153-8J010	TC32AA	GA	32	0.2 hrs
