



SERVICE BULLETIN

Classification:

EC09-029

Reference:

NTB09-144

Date:

December 15, 2009

2000-2005 SENTRA; MIL “ON” WITH DTC P1138

APPLIED VEHICLES: 2000-2005 Sentra (B15) – with QG18DE Engine **ONLY**

IF YOU CONFIRM

An Applied Vehicle has the MIL “ON” with the following DTC stored:

- P1138 (Swirl Control Valve),

and there are no driveability symptoms.

ACTION

1. Confirm this bulletin applies:

- Check the Current ECM Part Number (steps 1 and 2 in the Service Procedure on page 3).
- Compare your Current ECM Part Number to Chart A on page 4.

If your Current ECM part number does not match one in Chart A, this bulletin does not apply. Refer to the appropriate Electronic Service Manual (ESM) for further diagnostic and repair information.

2. Reprogram the ECM (needed if a match is found during **ECM Part Number Check** starting on page 3).
3. Erase any DTC’s that stored during reprogramming.
4. Check for DTC P1138 reset.
5. Wrap up.

IMPORTANT: The purpose of “ACTION” (above) is to give you a quick idea of the work you will be performing. You **MUST** closely follow the entire Service Procedure as it contains information that is essential to successfully completing the repair.

Nissan Bulletins are intended for use by qualified technicians, not 'do-it-yourselfers'. Qualified technicians are properly trained individuals who have the equipment, tools, safety instruction, and know-how to do a job properly and safely. NOTE: If you believe that a described condition may apply to a particular vehicle, DO NOT assume that it does. See your Nissan dealer to determine if this applies to your vehicle.

CLAIMS INFORMATION

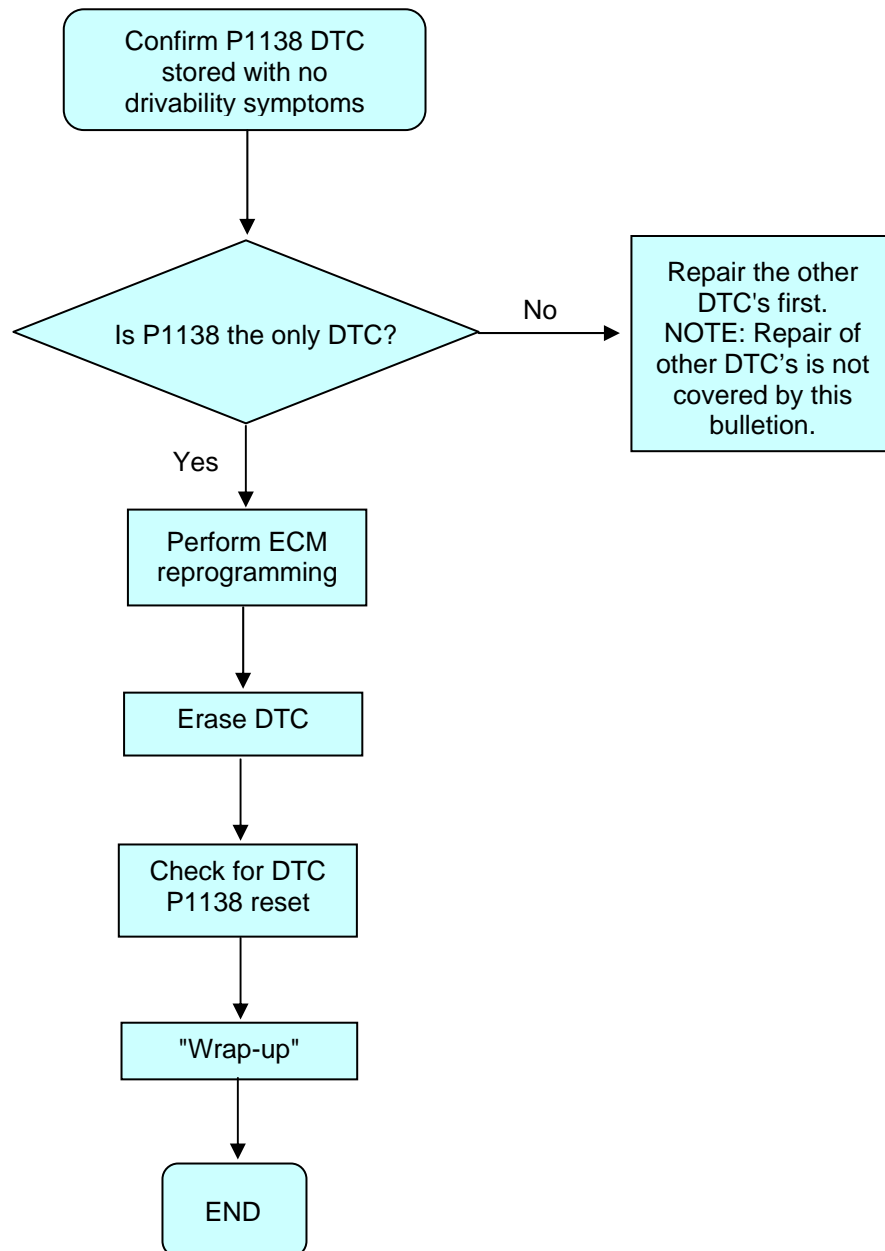
Submit a Primary Failed Part (PP) line claim using the following claims coding:

DESCRIPTION	PFP	OP CODE	SYM	DIA	FRT
Reprogram ECM per TSB	(1)	DE97AA (2)	HD	32	(3)

- (1) Reference the final CONSULT-II printout and use the indicated new ECM P/N as the PFP.
- (2) FRT allows adequate time to access DTC codes; no diagnosis procedure subsequently required. DO NOT claim any Diagnostic Op Codes with this claim.
- (3) Reference the current Nissan Warranty Flat Rate Manual and use the indicated flat rate time.

SERVICE PROCEDURE

Overview



Confirm This Bulletin Applies

1. With CONSULT-II "ON", print the Freeze Frame data as follows:

START(Nissan) >> **ENGINE** >> **Self-DIAG Results** >> **F.F. Data** >> **PRINT**

2. Attach this printout to the Repair Order.

- The Freeze Frame data that you've printed contains the ECM Part Number (P/N).
- Figure 1 is an example of the F.F. Data printout.

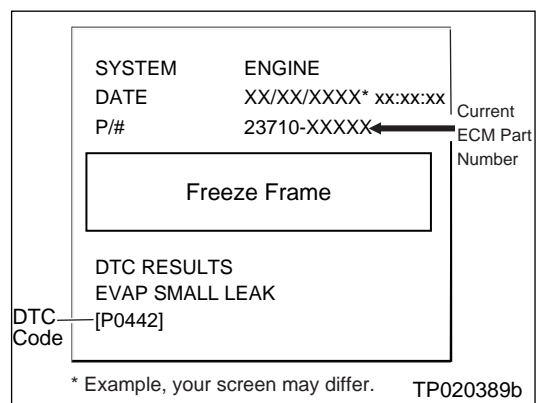


Figure 1

ECM Part Number Check

3. Using the ECM Part Number printout from Step 1 (Figure 1):

- Compare the vehicle's current ECM P/N to those shown under **Current ECM P/N** in **Chart A** on page 4.
- This comparison will allow you to determine if the ECM needs to be reprogrammed.

CHART A

Vehicle	Vehicle Configuration	Current ECM P/N
2000 – 2002 Sentra	AT	23710 -8U181, -8U180, -6M415, -6M413, -6M412, -6M411
2003 Sentra	MT	23710 -8U400, -8U401, -8U402, -8U403, -8U40A, -8U40B, -8U40C, -8U40D
	MT ASCD	23710 -8U410, -8U411, -8U412, -8U413, -8U41A, -8U41B, -8U41C, -8U41D
	AT	23710 -8U420, -8U421, -8U422, -8U423, -8U42A, -8U42B, -8U42C
	AT ASCD	23710 -8U440, -8U441, -8U442, -8U443, -8U43A, -8U43B, -8U43C
2004 Sentra	MT	23710 -8U800, -8U801, -8U802, -8U803, -8U804, -8U80A, -8U80B, -8U80C, -8U80D, -8U821, -8U82A, -8U82B, -8U82C, -8U82D, -8U871, -8U881
	MT ASCD	23710 -8U805, -8U806, -8U807, -8U808, -8U809, -8U81A, -8U81B, -8U81C, -8U81D, -8U822, -8U83A, -8U83B, -8U83C, -8U83D, -8U872, -8U882
	AT	23710 -8U810, -8U811, -8U812, -8U813, -8U814, -8U823, -8U84A, -8U84B, -8U84C, -8U873, -8U87A, -8U87B, -8U87C, -8U883
	AT ASCD	23710 -8U815, -8U816, -8U817, -8U818, -8U819, -8U824, -8U85A, -8U85B, -8U85C, -8U874, -8U884, -8U88A, -8U88B, -8U88C
2005 Sentra	MT	23710 -6Z600, -6Z60A, -6Z60B, -6Z60C
	MT ASCD	23710 -6Z605, -6Z61A, -6Z61B, -6Z61C
	AT	23710 -6Z610, -6Z62A, -6Z62B
	AT ASCD	23710 -6Z615, -6Z63A, -6Z63B

- a. If your vehicle's ECM P/N **matches** a P/N in the chart above:
 - Perform **ECM Reprogramming** starting on page 5.
- b. If your vehicle's ECM P/N **does not match** a P/N in the chart above:
 - ECM Reprogramming is not necessary - **this bulletin does not apply**. Refer to the appropriate ESM for further diagnostic and repair information.

ECM REPROGRAMMING

Vehicle ECM Reprogramming Overview

There are six basic steps:

1. Download reprogramming data (transfer it) from ASIST into CONSULT-II.
 2. "Preparation" steps before reprogramming.
 3. Reprogram the vehicle ECM.
 4. Erase any DTC's that stored during reprogramming.
 5. Check for DTC P1138 reset.
 6. "Wrap-up."
- If you're not familiar with the latest ECM reprogramming procedures, click [here](#). This will link you to the "ECM Reprogramming For Nissan Vehicles" general procedure.
 - For those familiar with ECM Reprogramming, please review the following steps and use them as a Quick Reference for ECM reprogramming.

Step One: Download (Transfer) Data From ASIST Into CONSULT-II

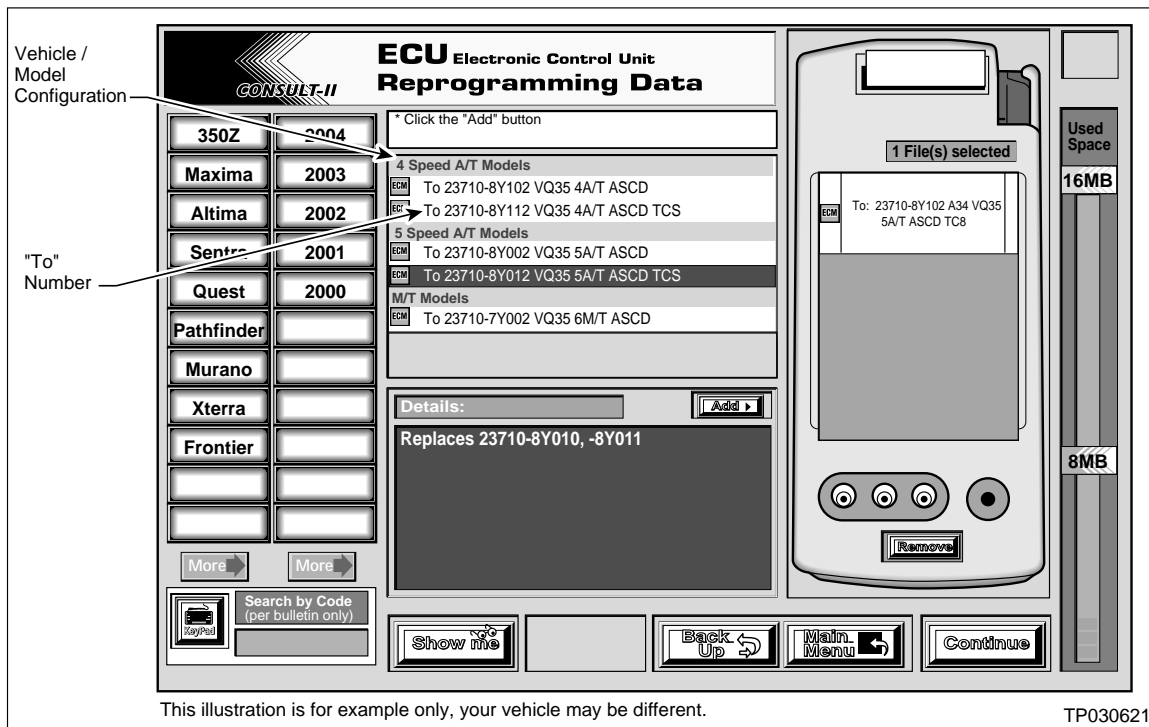


Figure A

1. Select vehicle model and model year (Example: Maxima, 2004).
2. Select the correct reprogramming data:
 - a. Locate the specific "Model Configuration" (Example: VQ35 5A/T ASCD TCS).

NOTE: Model Configuration may include items such as engine type, transmission type, and vehicle options such as ASCD, TCS, ABS etc.

- b Select (click on) the “To” number. (Write the “To” number on the repair order.)

NOTE: The “To” number will read: 23710-XXXXX.

3. Click on the “Add” button.

- This will add the selected data to the “File(s) Selected” list.

4. Click on “Continue” and follow directions to perform “data transfer” (download) from ASIST into CONSULT-II.

Step Two: Preparation for Reprogramming ECM

1. Connect a battery charger to the vehicle's battery.

- Set the charger to a low charger rate (trickle charge).

CAUTION: DO NOT connect the CONSULT-II AC power supply for items 2 and 3.

2. Press **SUB MODE** (see Figure B) then:

- a. From the listed items, find and select **BATTERY CHARGE**.

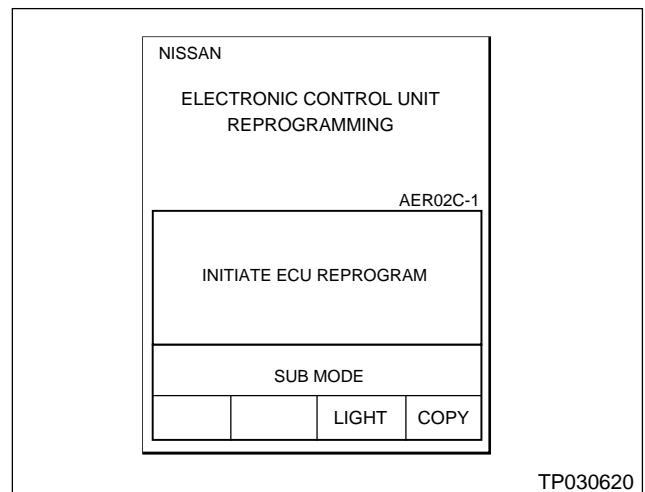


Figure B

3. Check the CONSULT-II's “Charger Input” reading (see Figure C).

NOTE:

- “**Battery Voltage**” is the voltage level of CONSULT-II's battery.
- “**Charger Input**” is the voltage level of the vehicle's battery. (**It must be above 12 volts.**)

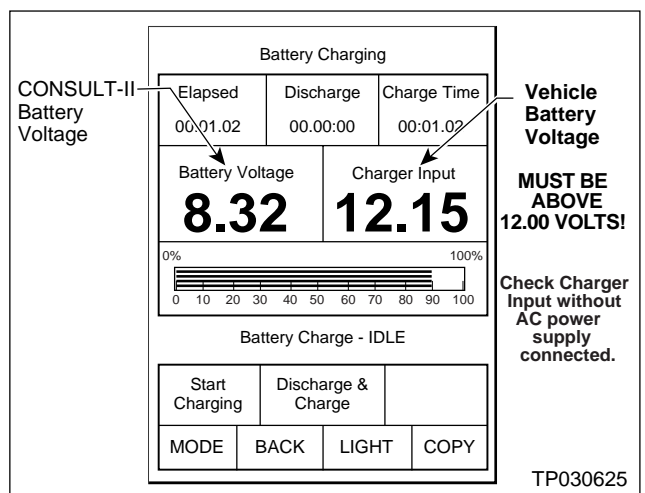


Figure C

CAUTION: If the “Charger Input” is below 12 volts:

- Click [here](#) to link to the "ECM Reprogramming For Nissan Vehicles" general procedure.
- The general procedure includes a list of items to check when “Charger Input” voltage is below 12V.

Step Three: Reprogram the Vehicle ECM

Step Four: Erase DTC’s

- Use CONSULT-II and the Diagnostic (red/white) Card to check and erase any DTC’s that may have stored during the reprogramming procedure.

Step Five: Check for DTC P1138 Reset

1. Turn the ignition switch "ON" and wait at least 2 seconds. (See Figure D.)
2. Select “Data Monitor” mode with CONSULT-II.
3. Start the engine and let it idle for at least 10 seconds.
4. Turn the ignition switch "OFF" and wait at least 10 seconds.
5. Turn the ignition switch "ON" and wait at least 2 seconds.
6. Start the engine and let it idle for at least 10 seconds.
 - Maintain engine speed at about 2,000 rpm for at least 10 seconds.
7. Turn the ignition switch “OFF,” wait at least 10 seconds, then turn the ignition switch “ON.”
 - If DTC P1138 resets, refer to the appropriate ESM for further diagnostic and repair information.
 - If DTC P1138 is not detected, proceed to the next step.
8. Perform steps 5 through 7 three times.

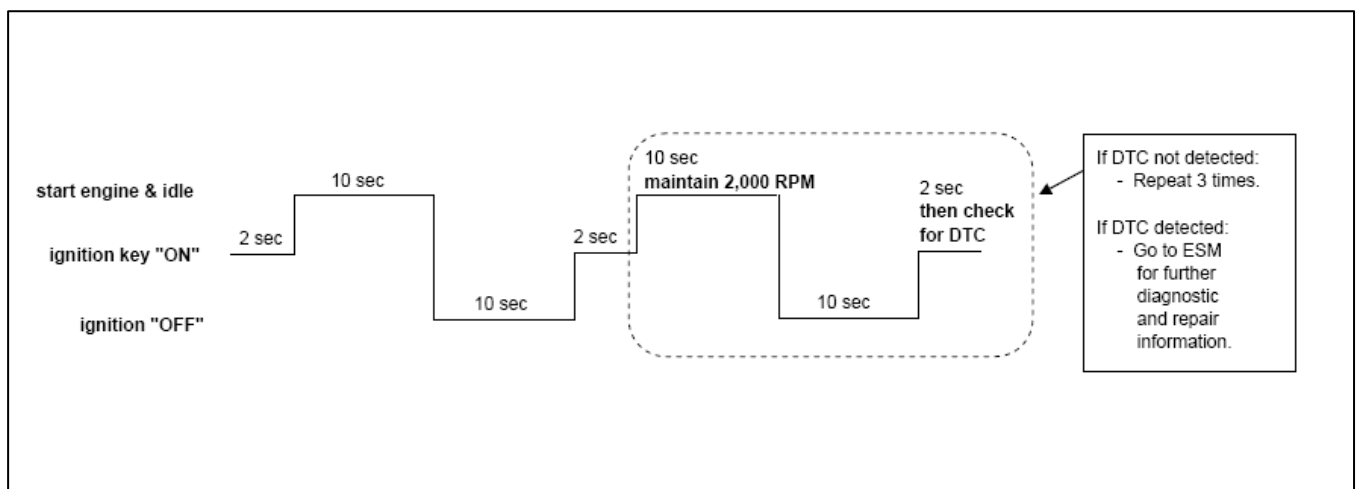


Figure D

Step Six: “Wrap Up”

1. Start the engine and check the idle speed.
 - If idle speed is too low, perform IAVL (Idle Air Volume Learning). See the appropriate ESM for this procedure.

NOTE: If the engine will not idle, hold the engine RPM at about 2000, then slowly bring it down to an idle. IAVL can now be performed.

2. Confirm the engine is operating normally.
3. Make sure the “Check Engine Light “ (MIL) is not “ON”.

