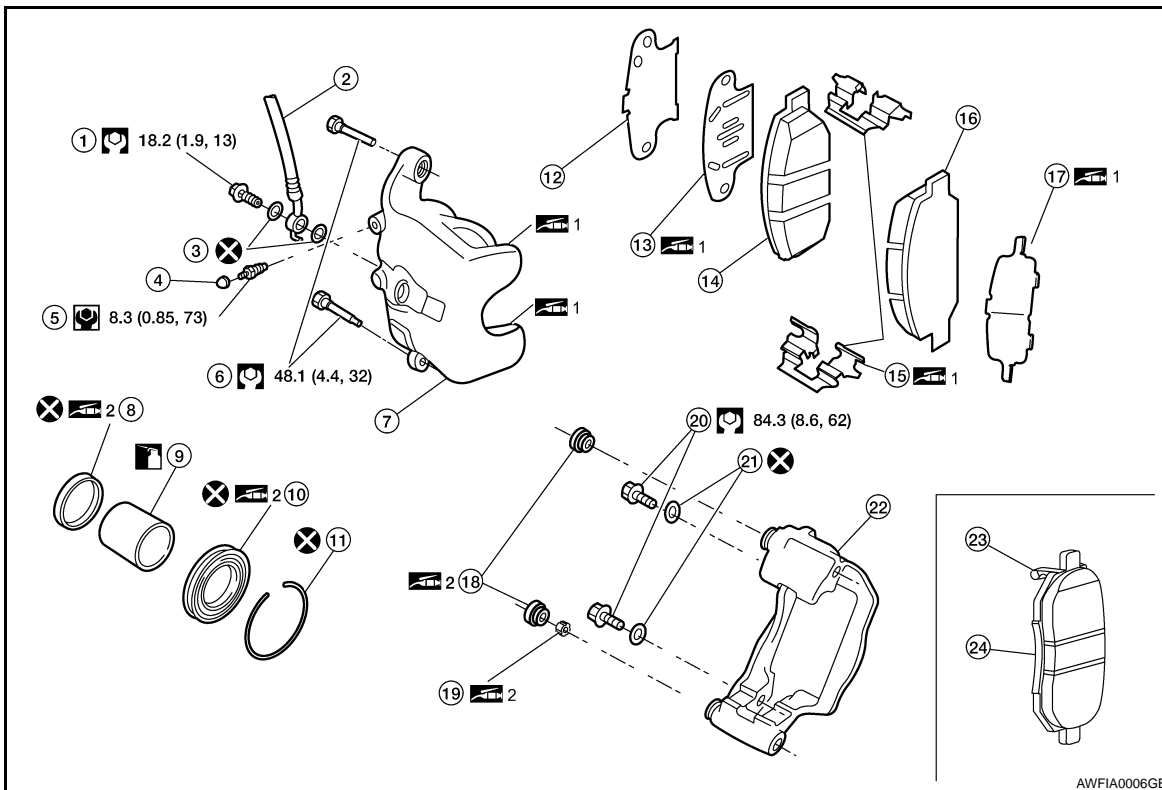


REAR DISC BRAKE

< ON-VEHICLE REPAIR >

BRAKE PAD : Exploded View

INFOID:000000001604520



- | | | |
|-------------------|---------------------------------|----------------------|
| 1. Union bolt | 2. Brake hose | 3. Copper washer |
| 4. Cap | 5. Bleed valve | 6. Sliding pin bolt |
| 7. Cylinder body | 8. Piston seal | 9. Piston |
| 10. Piston boot | 11. Retaining ring | 12. Inner shim cover |
| 13. Inner shim | 14. Inner pad | 15. Pad retainer |
| 16. Outer pad | 17. Outer multilayered shim | 18. Sliding pin boot |
| 19. Bushing | 20. Torque member mounting bolt | 21. Washer |
| 22. Torque member | 23. Pad wear sensor | 24. Inner pad (RH) |
- 1: PBC (Poly Butyl Cuprysil) grease or silicone-based grease
 2: Rubber grease
 : Brake fluid

Refer to GI section for symbol marks except in the above.

BRAKE PAD : Removal and Installation of Brake Pad

INFOID:000000001604521

REMOVAL

1. Remove tires from vehicle with power tool.
2. Remove mounting bolt from the top mount.
3. Swing cylinder body open, and remove pads.

INSTALLATION

1. Push piston in so that pad is firmly attached and mount cylinder body to torque member.

NOTE:

Using a commercially available disc brake piston tool, makes it easier to push in the piston.

CAUTION:

By pushing in piston, brake fluid returns to master cylinder reservoir tank. Watch the level of the surface of reservoir tank.

2. Apply Molykote M-77 grease to knuckle slide where brake pad contacts.

CAUTION:

Do not get grease on the brake rotor friction surface.