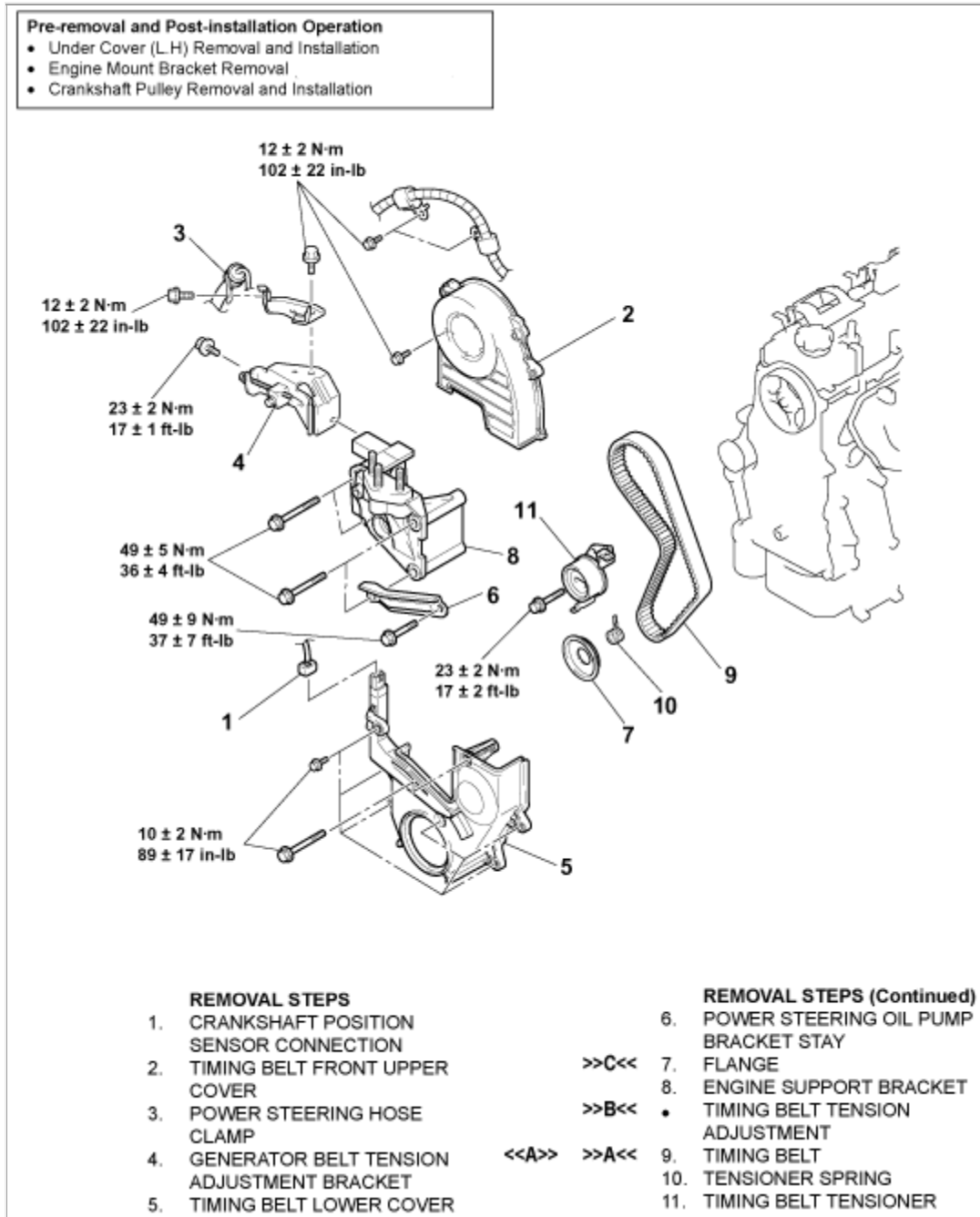


2003 Mitsubishi Lancer L4-2.0L SOHC

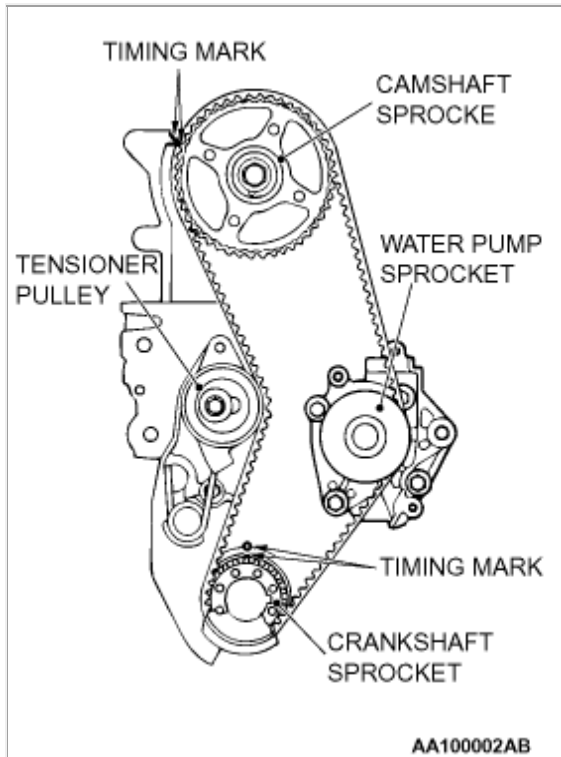


REMOVAL AND INSTALLATION

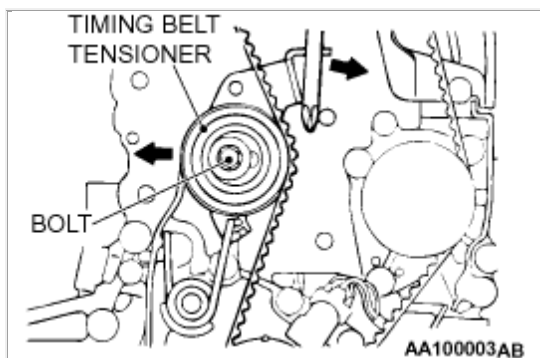
REMOVAL SERVICE POINT

◁ TIMING BELT REMOVAL

CAUTION: The crankshaft should always be turned only clockwise.



1. Turn the crankshaft clockwise (right turn) to align each timing mark and to set the number 1 cylinder at compression top dead center.

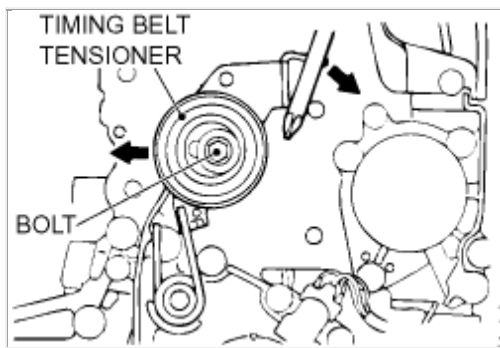


2. Loosen the tension pulley fixing bolt. **CAUTION:** If the timing belt is to be re-used, use chalk to mark (on its flat side) an arrow indicating the clockwise direction.
3. Place a screwdriver against the tensioner pulley and pry it fully back in the direction of the arrow.
4. Temporarily tighten the tensioner pulley bolt.
5. Remove the timing belt.

INSTALLATION SERVICE POINTS

>>A<< TIMING BELT INSTALLATION

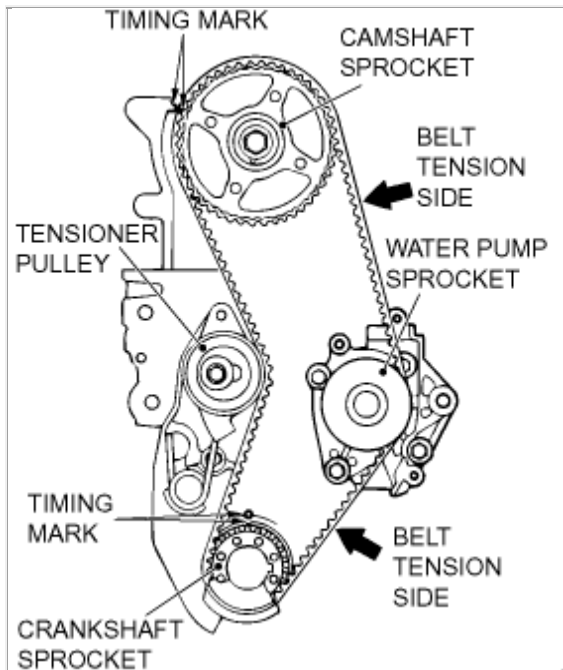
CAUTION: After installing the timing belt, try to rotate the camshaft sprocket in the reverse direction. Recheck to be sure that the belt is fully tensioned and that each timing mark is in the proper position.



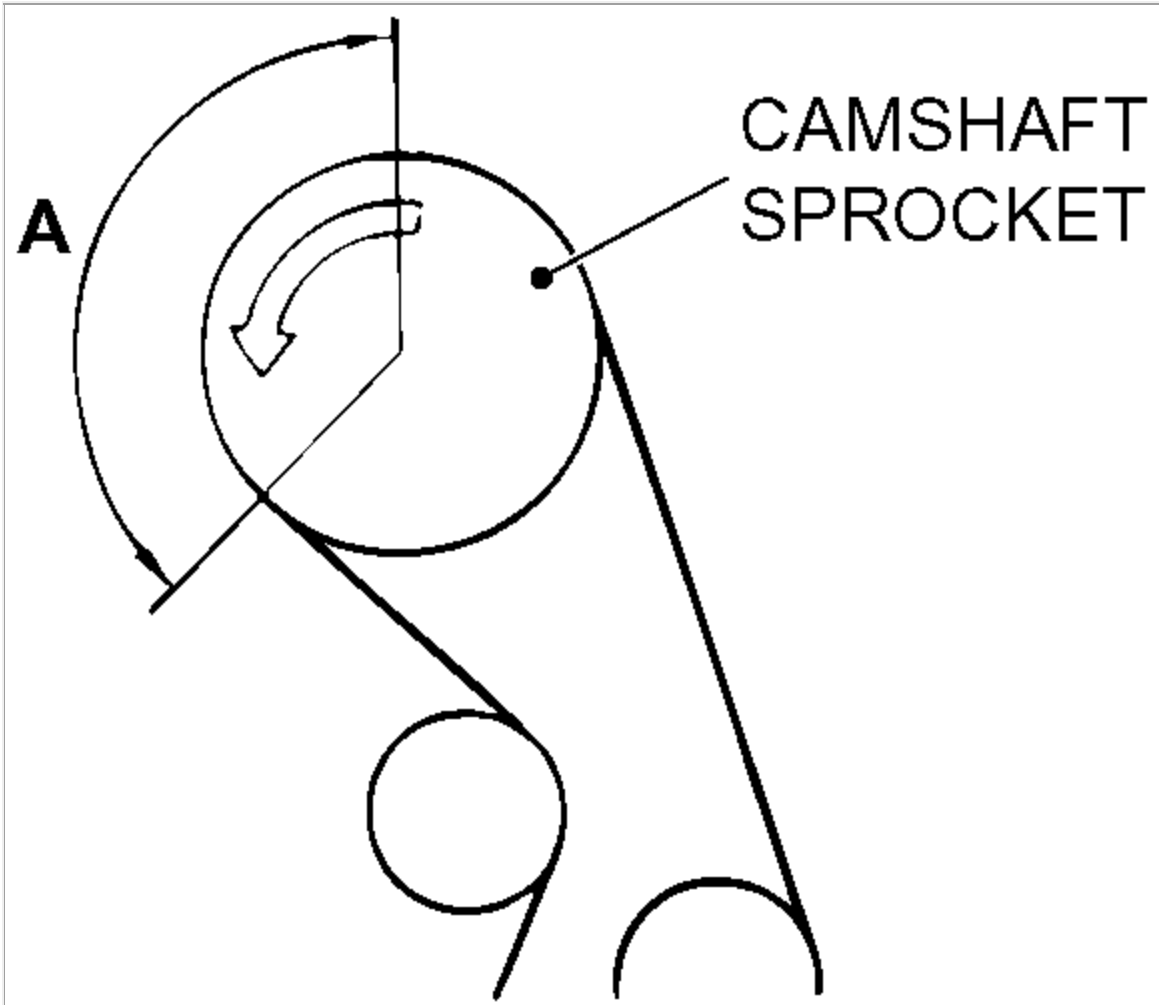
1. With the timing belt tensioner pulley bolt loosened, use a screwdriver to pry the tensioner pulley as close to the engine mount as possible. Then temporarily tighten tensioner bolt.
2. Align each of the camshaft and crankshaft sprocket timing marks.
3. Install the timing belt in the following order, while making sure that the tension side of the belt is not loose.

- 1) Crankshaft sprocket
- 2) Water pump sprocket
- 3) Camshaft sprocket
- 4) Tensioner pulley

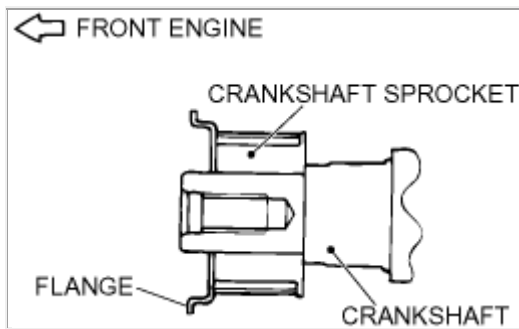
>>B<< TIMING BELT TENSION ADJUSTMENT



1. Initially loosen the fixing bolt of the tensioner pulley fixed to the engine mount side by **1/4 - 1/2 turn** , and use the force of the tensioner spring to apply tension to the belt. **CAUTION:** As the purpose of this procedure is to apply the proper amount of tension to the tension side of the timing belt by using the cam driving torque, turn the crankshaft only by the amount given below. Be sure not to turn the crankshaft in the opposite direction (counter clockwise).
2. Turn the crankshaft in the proper rotation direction (clockwise) for two rotations, and recheck to be sure that the timing marks on each sprocket are aligned.



3. After checking to be sure that no belt teeth in the section marked with A are lifted up and that the teeth in each sprocket are engaged, secure the tensioner pulley.
>>C<< FLANGE INSTALLATION



Install the flange as shown in the illustration.