

REMOVAL & INSTALLATION

TIMING BELT

CAUTION: This application is an interference engine. Do not rotate camshaft or crankshaft when timing belt is removed, or engine damage may occur.

Removal

CAUTION: The following procedure can only be used if camshaft sprockets have NOT been loosened or removed. If camshaft sprockets have been removed, special tools and timing procedure are required.

1. Disconnect negative battery cable from jumper terminal. Remove upper radiator crossmember (may also be referred to as the engine compartment support). Remove electric cooling fan module with fans.
2. Remove accessory drive belts. Hold crankshaft damper stationary while removing center bolt. See **Fig. 1**. Use gear puller to remove crankshaft damper. Remove the A/C belt guide/lift bracket.
3. Remove lower timing belt cover. Remove stamped steel (right side) timing belt cover. DO NOT remove the sealer on the stamped steel cover, as it is reusable.
4. Remove cast (left side) timing belt cover. If reusing old timing belt, mark belt direction of rotation for reinstallation.

CAUTION: Align camshaft sprockets between marks on rear belt covers before removing timing belt, or damage to valves and pistons may occur.

CAUTION: When aligning timing marks, always rotate engine by turning crankshaft. Failure to do so will result in valve and/or piston damage.

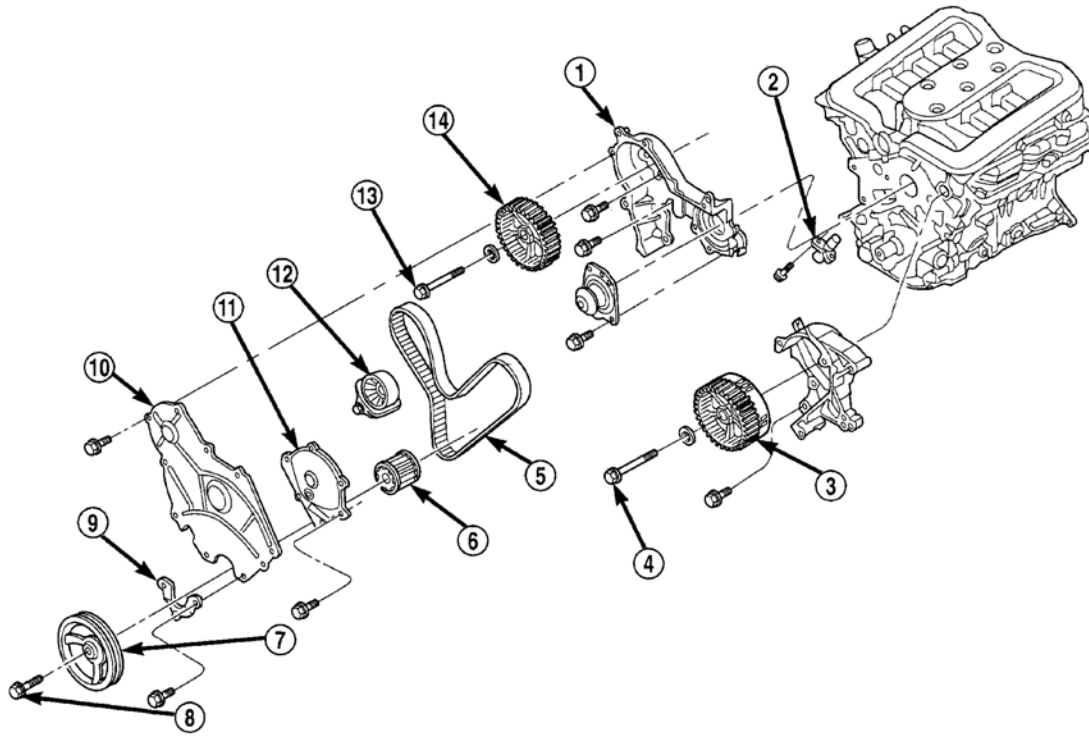
5. Rotate crankshaft to align crankshaft sprocket timing mark with TDC mark on oil pump housing. Align camshaft sprockets with marks on rear covers. See **Fig. 2** and **Fig. 3**.

CAUTION: When timing belt tensioner is removed from engine, always store tensioner with plunger facing up.

6. Remove timing belt tensioner. See **Fig. 1**. Store with plunger facing up. Remove timing belt.

1996 Dodge Intrepid

CHRYSLER & EAGLE '3.2L & 3.5L V6



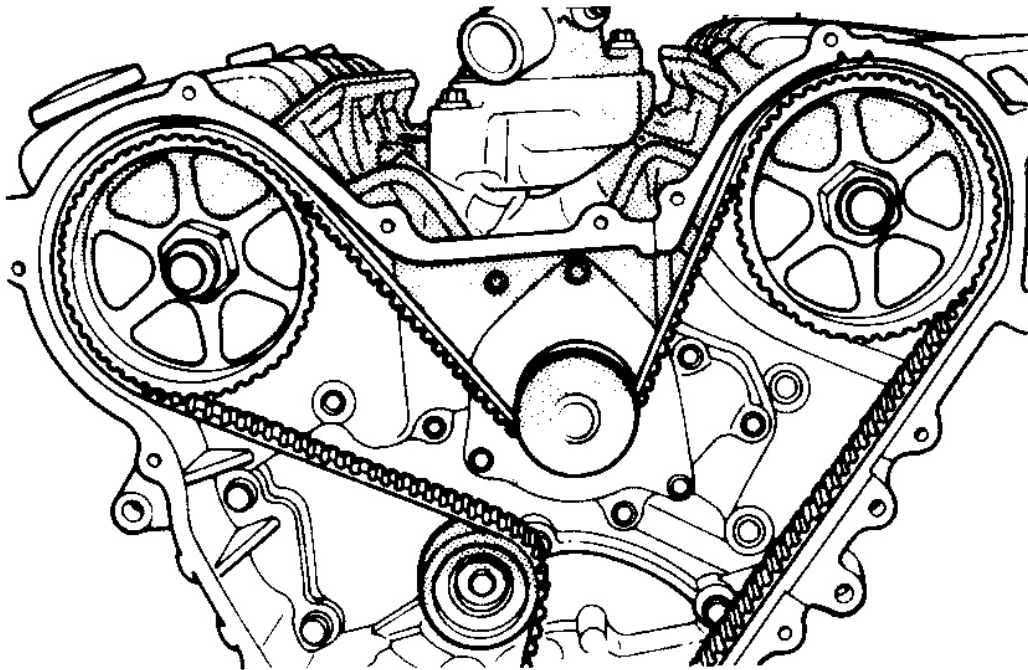
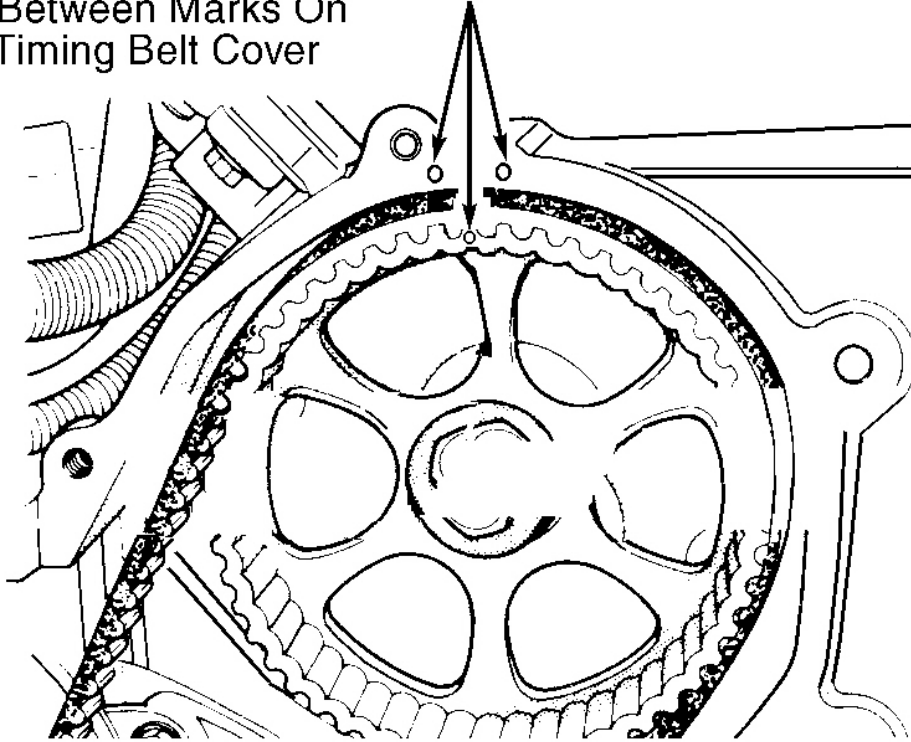
- 1 - TIMING BELT COVER - RIGHT REAR
- 2 - TENSIONER-TIMING BELT
- 3 - CAMSHAFT SPROCKET
- 4 - BOLT-CAMSHAFT SPROCKET
- 5 - TIMING BELT
- 6 - CRANKSHAFT SPROCKET
- 7 - CRANKSHAFT DAMPER

- 8 - BOLT-CRANKSHAFT DAMPER
- 9 - TIMING BELT COVER-LOWER
- 10 - TIMING BELT COVER-RIGHT
- 11 - TIMING BELT COVER-LEFT
- 12 - TENSIONER PULLEY
- 13 - BOLT-CAMSHAFT SPROCKET
- 14 - CAMSHAFT SPROCKET

G00251592

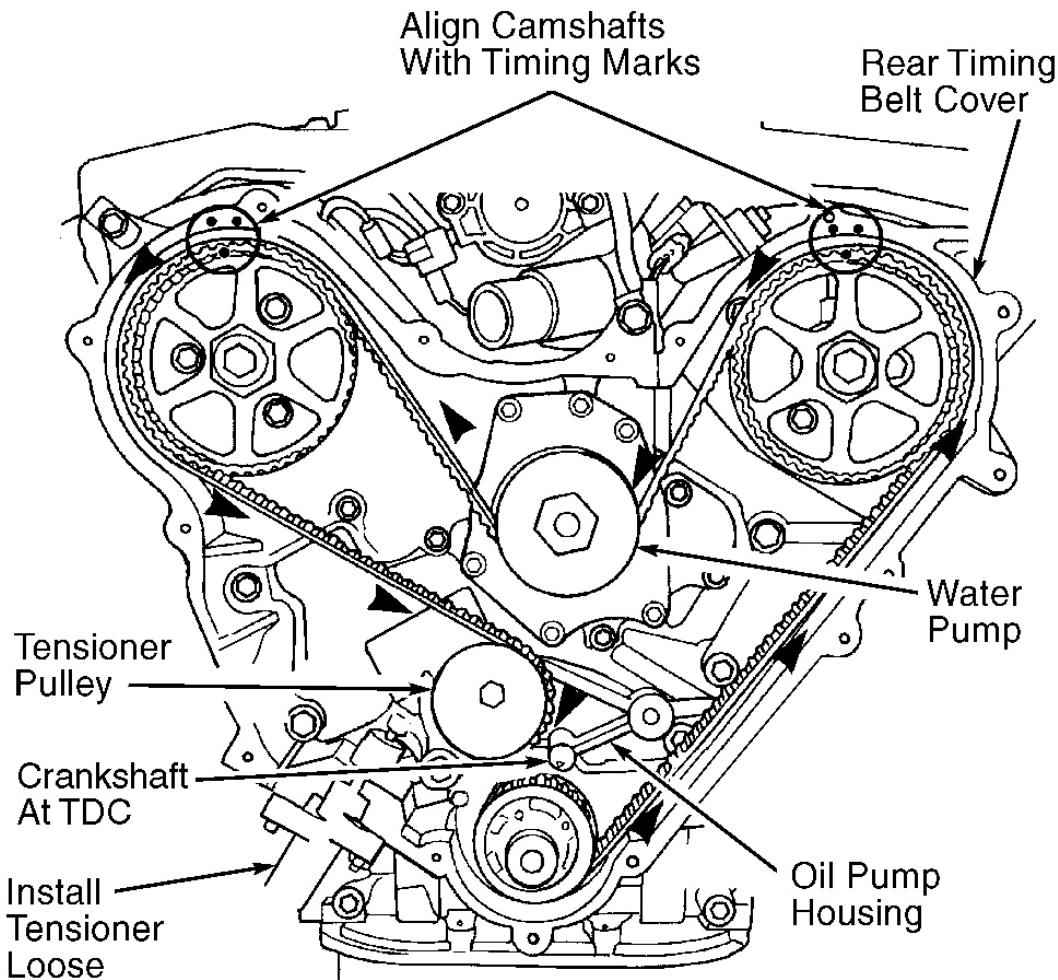
Fig. 1: Exploded View Of Timing Belt & Components (2000 & Up)
Courtesy of CHRYSLER CORP.

Align Camshaft Sprocket Timing
Mark Between Marks On
Rear Timing Belt Cover



G96E14666

Fig. 2: Aligning Camshaft Sprocket Timing Marks
Courtesy of DAIMLERCHRYSLER CORP.



NOTE: Install timing belt counterclockwise starting at the crankshaft pulley.

G98F03497

Fig. 3: Installing Timing Belt
Courtesy of CHRYSLER CORP.

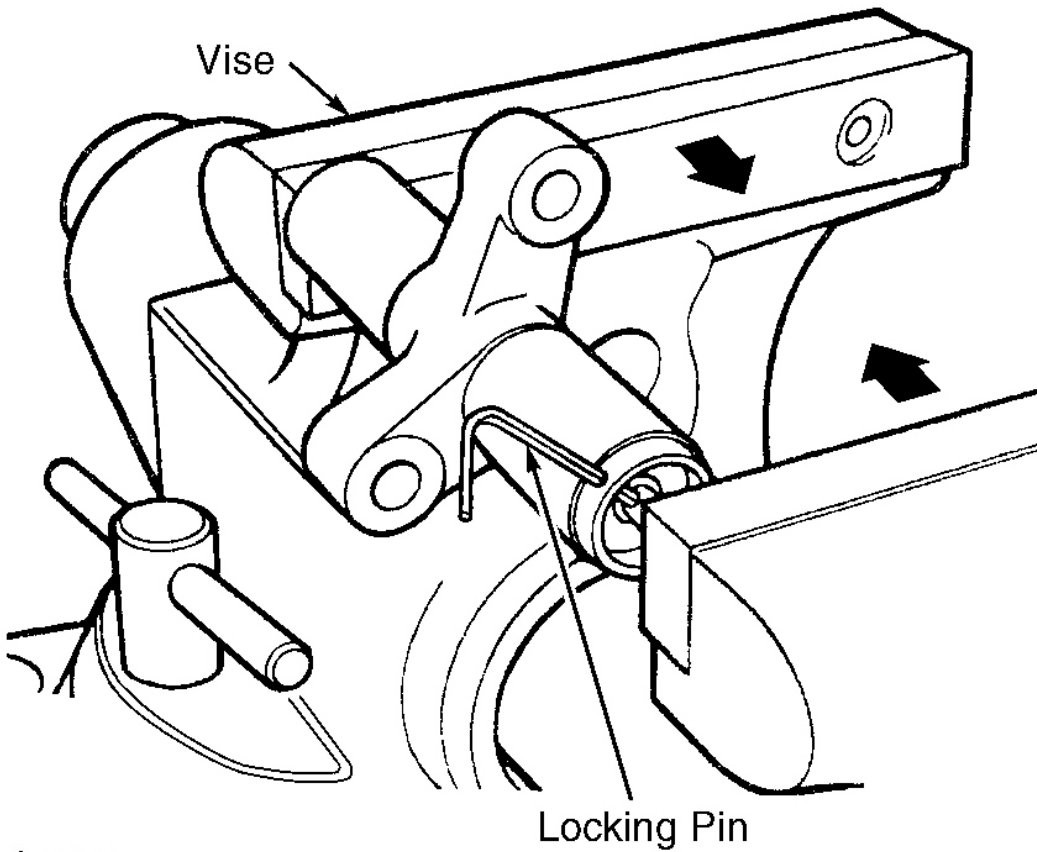
Installation

CAUTION: This procedure can only be used when the camshaft sprockets have NOT

been loosened or removed from the camshafts.

CAUTION: If camshafts have moved from the timing marks, always rotate camshafts toward the direction nearest to the timing marks. DO NOT turn the camshafts a full revolution or damage to valves and/or pistons could result.

1. When tensioner is removed from engine, it is necessary to compress plunger into tensioner body. Place timing belt tensioner in vise with holes in plunger and housing aligned.
2. SLOWLY compress plunger. See **Fig. 4** . Total bleed down of plunger should take about 5 minutes. When pin holes are aligned, install locking pin through tensioner and plunger.
3. Ensure camshaft and crankshaft sprocket timing marks are still aligned. If camshaft timing marks are not aligned, always rotate camshafts toward nearest timing marks. DO NOT turn camshafts a full revolution. This could cause valves to contact pistons.
4. Install timing belt starting at crankshaft sprocket, going in a counterclockwise direction. After belt is installed on right camshaft sprocket, keep tension on belt until it is past tensioner pulley.
5. Holding tensioner pulley against belt, install tensioner into housing and tighten bolts to specification. See **TORQUE SPECIFICATIONS** . Ensure camshaft timing marks are aligned. When tensioner is in place, pull locking pin to allow tensioner to extend to pulley bracket.
6. Rotate crankshaft sprocket 2 revolutions, and check timing marks on camshafts and crankshaft. Marks should line up within their respective locations. If marks do not line up, repeat procedure. See **Fig. 2** and **Fig. 3** .
7. Install timing belt covers and crankshaft damper. See **Fig. 1** . Install accessory drive belts. To complete installation, reverse removal procedure. Adjust drive belts to proper tension.
8. Start engine and allow to idle for about one minute. If noise is present in timing belt tensioner, air has possibly entered tensioner. To remove air, run engine at 1600-2000 RPM for 10 minutes to purge air.



G93D39555

Fig. 4: Compressing Tensioner
 Courtesy of CHRYSLER CORP.

TORQUE SPECIFICATIONS

TORQUE SPECIFICATIONS

Application	Ft. Lbs. (N.m)
Crankshaft Pulley Bolt	
1993-97	85 (115)
1999-04	70 (95)
Timing Belt Cover Bolts	
M6	(1)
M8	21 (28)
M10	40 (54)
Timing Belt Tensioner	21 (28)

1996 Dodge Intrepid

CHRYSLER & EAGLE' 3.2L & 3.5L V6

Timing Belt Tensioner Pulley Assembly	45 (61)
	INCH Lbs. (N.m)
Water Pump Bolts	106 (12)
(1) Tighten bolts to 106 INCH lbs. (12 N.m).	