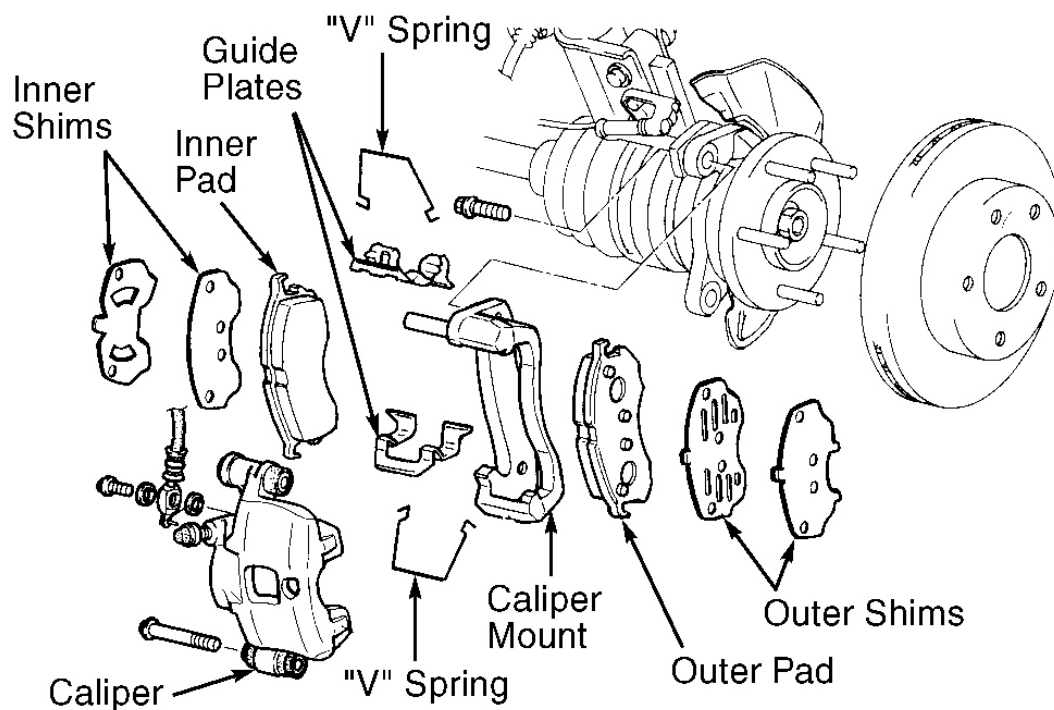


REMOVAL & INSTALLATION

FRONT DISC BRAKE PADS

Removal & Installation

1. Raise and support front of vehicle. Remove front wheel assemblies. Remove lower lock pin/guide bolt. See **Fig. 2** . Pivot caliper upward and support using rope.
2. Remove pads, shims, guide plates or pad guides and "V" springs (if equipped). Replace pad if lining thickness is less than specified. See **MINIMUM PAD LINING SPECIFICATIONS (FRONT)** table.
3. To install, reverse removal procedure. Use Disc Brake Expander (49-0221-600C) and an old pad to push piston fully inward to install disc pads.



93E82895

Fig. 2: Exploded View Of Front Brake Disc Assembly
 Courtesy of MAZDA MOTORS CORP.

MINIMUM PAD LINING SPECIFICATIONS (FRONT)

Application	Thickness In. (mm)
MX-6, 626	.04 (1.0)

FRONT DISC BRAKE CALIPER

Removal & Installation

Raise and support front of vehicle. Remove front wheel assemblies and disconnect brake hose. Plug all openings. Remove front disc brake pads. See **FRONT DISC BRAKE PADS** . Remove remaining mounting bolt(s). Remove caliper from vehicle. To install, reverse removal procedure. Bleed air from system.

FRONT BRAKE ROTOR

Removal & Installation

1. Raise and support front of vehicle. Remove front wheel assemblies. Remove front disc brake caliper with brake hose connected. See **FRONT DISC BRAKE CALIPER** . Wire caliper aside. Remove rotor-to-hub screws (if equipped). Remove rotor.
2. Machine rotor if lateral runout exceeds specification. Replace rotor if measured thickness is less than specified minimum thickness. See **DISC BRAKE SPECIFICATIONS** table. To install, reverse removal procedure.

REAR DISC BRAKE PADS

Removal & Installation

1. Raise and support rear of vehicle. Remove rear wheel assemblies. Release parking brake and disconnect parking brake cable from caliper. Remove manual adjustment gear concealment plug from caliper. See **Fig. 3** . Insert an appropriate size Allen wrench through hole and turn manual adjustment gear counterclockwise to retract caliper piston.
2. Remove upper guide bolt from caliper. Rotate caliper downward and support using wire. Remove "M" springs. Remove pads, shims and guide plates. Replace pad if lining thickness is less than .04" (1.0 mm).
3. To install, reverse removal procedure. Turn manual adjustment gear clockwise until brake pads slightly touch rotor. Turn manual adjustment gear back 1/3 turn.

REAR BRAKE ROTOR**Removal & Installation**

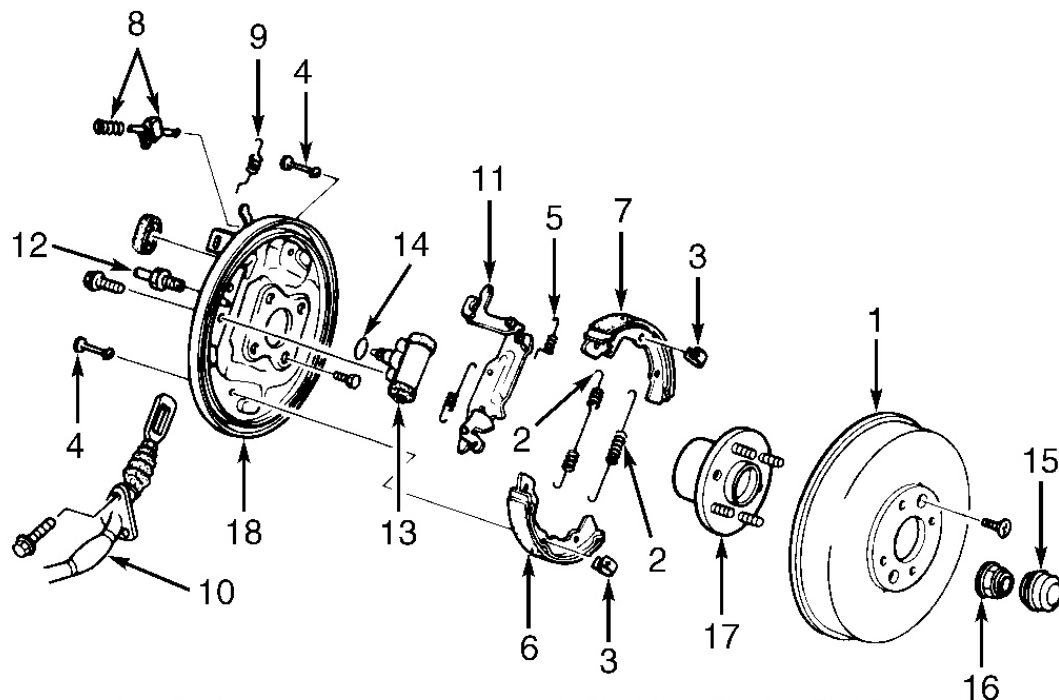
1. Raise and support vehicle. Remove rear wheel assemblies. Remove rear brake caliper with brake hose connected. See **REAR BRAKE CALIPER** . Support caliper using wire. Remove rotor-to-hub screws (if equipped). Remove rotor.
2. Machine rotor if lateral runout exceeds specification. Replace rotor if measured thickness is less than specified minimum thickness. See **DISC BRAKE SPECIFICATIONS** table.
3. To install, reverse removal procedure. Check end play at grease cap. If end play exceeds .002" (.05 mm), check lock nut torque or replace wheel bearings.

REAR BRAKE SHOES & WHEEL CYLINDERS**Removal**

1. Raise and support vehicle. Remove rear wheel assemblies. Remove brake drum. Machine or replace drum as necessary if inner diameter is not as specified. See **DRUM BRAKE SPECIFICATIONS** table.
2. Remove return springs, hold pins and springs, and anti-rattle spring. See **Fig. 4** . Note positions of primary and secondary shoes and remove brake shoes. Minimum brake shoe lining thickness is .04" (1.0 mm).
3. Remove stopper spring and clip (if equipped), and return spring. Release parking brake and disconnect parking brake cable. Remove operating lever assembly. Using Flare Nut Wrench (49-0259-770B), disconnect brake line from wheel cylinder. Remove wheel cylinder.

Installation

1. To install, reverse removal procedure. Apply lithium base grease to wheel cylinder and anchor sliding parts, adjuster threads and shoe contact points on backing plate.
2. Install primary and secondary shoes in original positions (secondary shoe is longer). Adjust brake shoes. See **REAR BRAKE SHOES ADJUSTMENT** . Bleed air from system.



- | | |
|--------------------------|------------------------------|
| 1. Brake Drum | 10. Parking Brake Cable |
| 2. Return Spring | 11. Operating Lever Assembly |
| 3. Hold Spring | 12. Brakeline |
| 4. Hold Pin | 13. Wheel Cylinder |
| 5. Anti-Rattle Spring | 14. Gasket |
| 6. Primary Shoe | 15. Grease Cap |
| 7. Secondary Shoe | 16. Lock Nut |
| 8. Stopper Spring & Clip | 17. Hub |
| 9. Return Spring | 18. Backing Plate |

G93C00846

Fig. 4: Exploded View Of Rear Drum Brake Assembly (MX-3 Shown; MX-6 626 Are Similar)
 Courtesy of MAZDA MOTORS CORP.

REAR AXLE BEARING & OIL SEAL

NOTE: For information on models with sealed wheel bearings, see appropriate article in SUSPENSION.

MASTER CYLINDER R & I

Removal & Installation

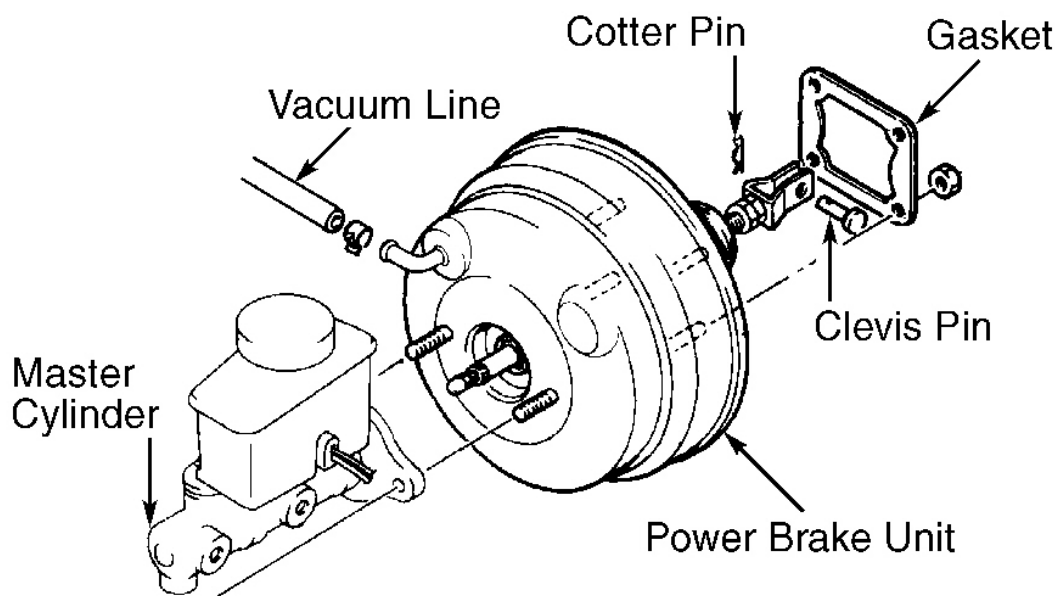
Disconnect fluid level sensor electrical connector at fluid reservoir. Disconnect and plug brake lines at master

cylinder to prevent entry of dirt and loss of fluid. Remove nuts attaching master cylinder to power brake unit. Remove master cylinder from vehicle. To install master cylinder, reverse removal procedure. Bleed air from system.

POWER BRAKE UNIT

Removal & Installation

Remove master cylinder from power brake unit. See **MASTER CYLINDER R & I**. Disconnect vacuum line at power brake unit. See **Fig. 5**. From inside vehicle, remove cotter pin and clevis pin. Separate push rod from brake pedal. Remove power brake unit-to-firewall nuts. Remove power brake unit. To install, reverse removal procedure. Bleed air from system.



93F00849

Fig. 5: Removing Power Brake Unit (Typical)
Courtesy of MAZDA MOTORS CORP.