

REMOVAL & INSTALLATION

REAR BRAKE CALIPER

NOTE: For rear disc pad removal and installation, **DO NOT** disconnect brake hose from caliper (wire aside). Replace all pads on an axle if wear indicator on any pad contacts rotor or if pad is worn to within .03" (.8 mm) of pad backing.

Removal ("A", "B", "C", "K" & "U" Series)

1. Remove 2/3 of brake fluid from master cylinder reservoir. Raise and support vehicle. Remove wheel. Using "C" clamp, compress caliper piston until it bottoms out in its bore.
2. Remove brake hose from caliper. Remove and discard brake hose gaskets. Plug openings in brake caliper and brake hose in order to prevent brake fluid loss and contamination. Remove caliper guide pin bolts. Remove brake caliper.

Removal ("S" & "T" Series)

1. Remove 2/3 of brake fluid from master cylinder reservoir. Raise and support vehicle. Remove wheel. Using "C" clamp, compress caliper piston until it bottoms out in its bore.
2. Remove brake hose from caliper. Remove caliper guide pin bolts. Remove caliper from caliper anchor bracket.

Installation

To install, reverse removal procedure. Lubricate caliper guide pin bolts with silicon lubricant. Tighten all nuts and bolts to specification. See **TORQUE SPECIFICATIONS** . Bleed brake system. See **MANUAL BLEEDING** or **PRESSURE BLEEDING** .

REAR BRAKE ROTOR

Removal

Raise and support vehicle. Remove 2/3 of brake fluid from master cylinder reservoir. Remove brake caliper, and wire aside. See **REAR BRAKE CALIPER** . Remove rotor.

Installation

To install, reverse removal procedure. Tighten all nuts and bolts to specification. See **TORQUE SPECIFICATIONS** . Bleed brake system. See **MANUAL BLEEDING** or **PRESSURE BLEEDING** .

REAR BRAKE DRUM

Removal & Installation (Aztek)

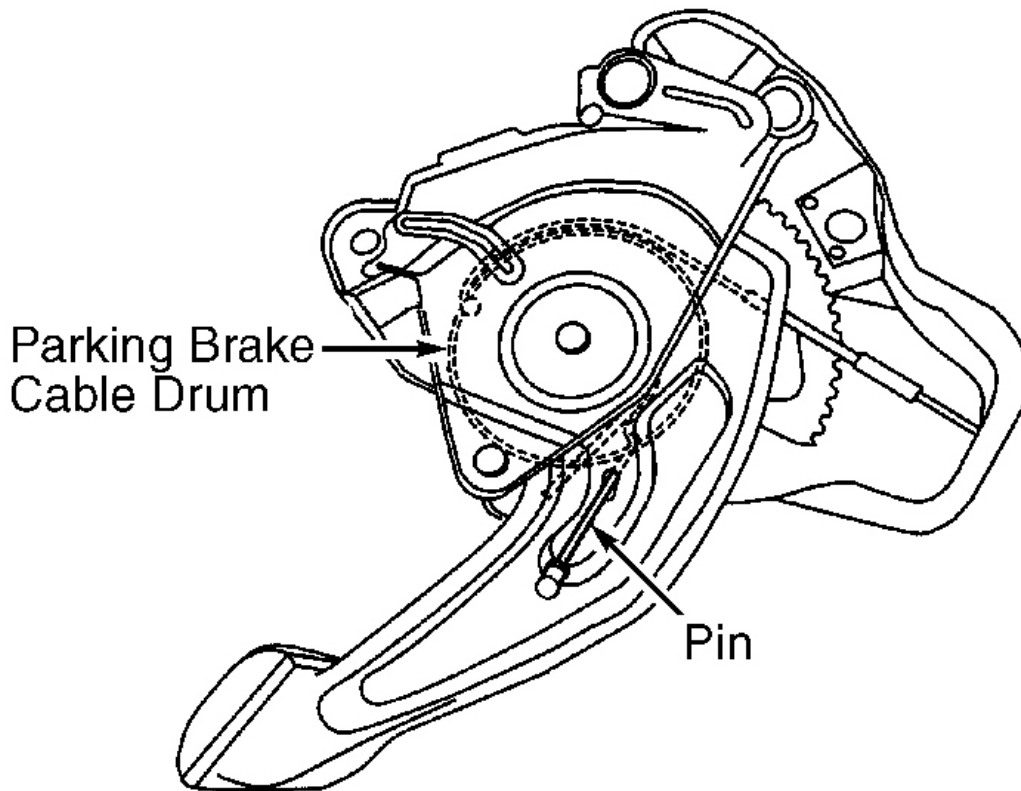
1. Ensure parking brake is released. Raise and support vehicle. Remove tire and wheel. Mark relationship of

drum to hub. Remove and discard retaining clip, if applicable. Remove brake drum. If brake drum does not come off easily, go to next step.

- Loosen parking brake cable. Remove access hole plug from backing plate. Insert a flat-bladed tool through backing plate access hole in order to disengage self adjuster. Insert another flat-bladed tool through same backing plate access hole to loosen adjuster screw. Install access hole plug in order to prevent dirt or contamination from entering drum brake. Apply a small amount of penetrating oil around brake drum center hole. Remove brake drum. To install, reverse removal procedure. Adjust rear brake shoes. See **REAR BRAKE SHOES** under ADJUSTMENTS.

Removal & Installation (Except Aztek, & Express & Savana With Full-Floating Axle)

Ensure parking brake is released. On Savana and Express, remove left kick panel. Place parking brake lever in full upright position. With an assistant in vehicle, raise and support vehicle. Pull rearward on front of cable strand until parking brake lever reaches its full reset position. Insert a pin into parking brake lever to hold tension. See **Fig. 3**. On all models, remove wheel. Reference mark rear brake drum-to-axle. Remove brake drum (if necessary, back off adjuster wheel before removing brake drum). To install, reverse removal procedure. Adjust rear brake shoes. See **REAR BRAKE SHOES** under ADJUSTMENTS.

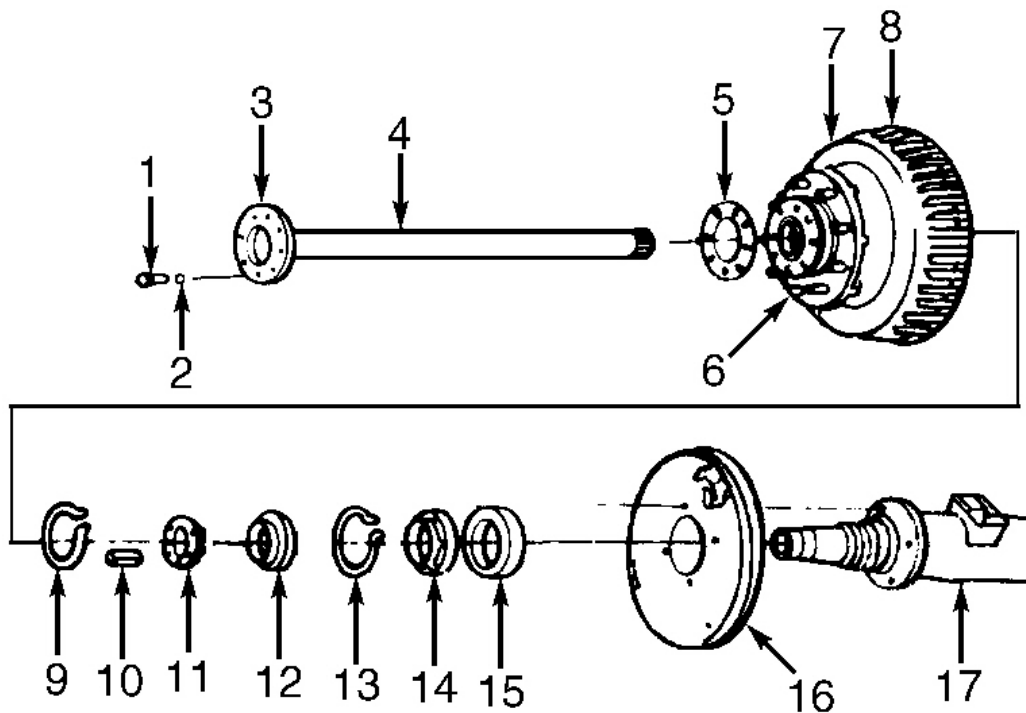


G97J03734

Fig. 3: Locking Parking Brake Lever (Savana & Express)
Courtesy of GENERAL MOTORS CORP.

Removal (Express & Savana With Full-Floating Axle)

1. Ensure parking brake is released. Raise and support rear of vehicle. Remove wheel. Remove bolts from end of axle shaft. See **Fig. 4** .
2. Lightly tap axle shaft flange with soft hammer to loosen shaft. Grip rib on axle shaft flange with locking pliers. Twist axle shaft to start shaft removal. Pull axle shaft from axle housing.
3. Bend lock washer tab away from lock nut. Using Wheel Bearing Nut Wrench (J-2222-C), remove lock nut. Remove lock washer. Remove adjusting nut and washer. Remove hub and brake drum assembly (if necessary, back off adjuster wheel before removing brake drum).



- 1. Bolt
- 2. Nut
- 3. Axle Shaft Flange
- 4. Axle Shaft
- 5. Gasket
- 6. Stud
- 7. Hub
- 8. Drum
- 9. Retaining Ring

- 10. Key
- 11. Adjusting Nut
- 12. Outer Bearing
- 13. Retaining Ring
- 14. Inner Bearing
- 15. Oil Seal
- 16. Backing Plate
- 17. Axle Tube

G91G13512

Fig. 4: Exploded View Of Rear Axle Shaft, Hub & Brake Drum Assembly (Full-Floating Axle)
 Courtesy of GENERAL MOTORS CORP.

Installation

1. Apply light coat of bearing lubricant to axle tube. Install hub and brake drum assembly. Install washer and adjusting nut. Using Wheel Bearing Nut Wrench (J-2222-C), tighten adjusting nut to specification, while turning hub and rotor assembly. See **TORQUE SPECIFICATIONS**.

2001 Chevrolet Suburban C1500

2000-01 BRAKES' 'Disc & Drum - Trucks - Except Tracker

- To complete installation, reverse removal procedure. Tighten fasteners to specification. See **TORQUE SPECIFICATIONS** .

REAR BRAKE SHOES

NOTE: Do not interchange left and right adjusting screw assemblies as one side is right-hand thread and other is left-hand thread.

Removal ("G", "L", "M", "S" & "T" Series)

- Raise and support vehicle. Remove tire and wheel. On Express and Savana, install pin into parking brake lever. See **Fig. 3** . Remove rear brake drum. See **REAR BRAKE DRUM** .
- Remove return springs, hold down springs and pins, and brake shoe guide. See **Fig. 13** Remove rear brake shoe actuator and link. Remove parking brake lever and strut. Remove rear brake shoe adjuster and spring. Remove brake shoes.

Removal (Aztek, Montana, Silhouette & Venture)

- Raise and support vehicle. Remove wheel and tire. Remove brake drum. See **REAR BRAKE DRUM** . Using Brake Shoe Spring Remover (J-38400), remove adjuster and return springs. See **Fig. 14** .
- Remove primary brake shoe. Remove adjuster actuator from primary brake shoe. Remove adjuster from secondary brake shoe and park brake actuator. Remove park brake actuator from secondary brake shoe.
- Using Brake Shoe Spring Remover (J-38400), remove secondary return spring. Remove secondary brake shoe.

Installation

To install, reverse removal procedure. Lubricate backing plate and adjusting screws with silicone lubricant. Tighten nuts and bolts to specification. See **TORQUE SPECIFICATIONS** . Bleed brake system. See **MANUAL BLEEDING** or **PRESSURE BLEEDING** .

DISC BRAKE SPECIFICATIONS

DISC BRAKE SPECIFICATIONS

Application	In. (mm)
Lateral Runout (All Models)	.003 (.08)
Parallelism (All Models)	.0005 (.013)
Original Thickness	
Astro & Safari	
2WD	1.04 (26.4)
AWD	1.25 (31.75)
Aztek	
Front	1.18 (30.0)
Rear	.43 (11.0)

2001 Chevrolet Suburban C1500

2000-01 BRAKES' 'Disc & Drum - Trucks - Except Tracker

"C" & "K" Series	
Front	
1500 Series	1.14 (29)
2500 & 3500 Series	1.50 (38)
Rear	
8 5/8" Ring Gear	.787 (20)
9 1/2" Ring Gear & 10 1/2" Ring Gear	1.14 (29)
11 1/2" Ring Gear	1.18 (30)
Express & Savana	
1500 & 2500 (Light Duty)	1.25 (31.75)
2500 (Gasoline Engine)	1.26 (32.0)
2500 (Diesel) & 3500	1.5 (38.1)
Montana, Silhouette,& Venture	1.27 (32.2)
"S" & "T" Series	1.03 (26.2)
Front	
Single Piston	1.03 (26.2)
Dual Piston	1.14 (29)
Rear	
	.787 (20)
Minimum Refinish Thickness ⁽¹⁾	
Astro, Safari	
2WD	.980 (24.89)
AWD	1.23 (31.2)
Aztek	
Front	1.125 (28.58)
Rear	.41 (10.6)
"C" & "K" Series	
Front	
1500 & 2500 Series	1.1 (28)
3500 Series	1.46 (37)
Rear	
8 5/8" Ring Gear	.748 (19)
9 1/2" & 10 1/2" Ring Gear	1.1 (28)
11 1/2" Ring Gear	1.142 (29)
Express & Savana	
1500 & 2500 Light Duty	1.23 (31.24)
2500 (Diesel) & 3500 Series	1.48 (37.59)
Montana, Silhouette & Venture	1.25 (31.8)
"S" & "T" Series	
Front	
Single Piston	.98 (24.89)

2001 Chevrolet Suburban C1500

2000-01 BRAKES' 'Disc & Drum - Trucks - Except Tracker

Dual Piston	1.13 (28.7)
Rear	.735 (18.67)
Discard Thickness	
Astro, Safari	
2WD	.965 (24.51)
AWD	1.215 (30.86)
Aztek	
Front	1.063 (27.0)
Rear	.35 (9.0)
"C" & "K" Series	
Front	
1500	1.082 (27.50)
2500 & 3500	1.437 (36.50)
Rear	
8 5/8" Ring Gear	.728 (18.5)
9 1/2" & 10 1/2" Ring Gear	1.082 (27.5)
11 1/2" Ring Gear	1.122 (28.5)
Express & Savana	
1500 & 2500	1.215 (30.86)
2500 (Diesel) & 3500	1.465 (37.21)
Montana, Silhouette & Venture	
"S" & "T" Series	.965 (24.51)
Front	
Single Piston	.965 (24.51)
Dual Piston	1.08 (27.4)
Rear	.728 (18.5)
(1) Use specification stamped on rotor (if available).	

TORQUE SPECIFICATIONS

TORQUE SPECIFICATIONS

Application	Ft. Lbs. (N.m)
Axle Shaft-To-Hub Bolt	52 (71)
Backing Plate Bolts	103 (140)
"C" & "K" Series	100 (136)
"L", "M", & "S" & "T" Series	35 (47)
Brake Cylinder Bolts	13 (18)
Brake Line Fittings	
"A", "B" & "U" Series	15 (20)
"C", "G" & "K" Series	18 (24)

2001 Chevrolet Suburban C1500

2000-01 BRAKES' 'Disc & Drum - Trucks - Except Tracker

"L", "M", & "S" & "T" Series	13 (18)
Brake Line Fittings-To-EBCM	15 (20)
Brake Hose-To-Front Brake Caliper	
"A", "B" & "U" Series	40 (54)
"C", "G" & "K" Series	38 (52)
"L", "M", & "S" & "T" Series	32 (43)
Brake Hose-To-Rear Brake Caliper "A" & "B" Series	32 (43)
Brake Hose-To-Rear Brake Caliper "C" & "K" Series	
1500	35 (47)
2500 & 3500	38 (52)
Caliper Guide Pin	
"C" & "K" Series	
Front	80 (108)
Rear	
1500	31 (42)
2500 & 3500	80 (108)
"S" & "T" Series	
Front	85 (115)
Rear	23 (31)
Caliper Bolt	
Aztek	
Front	26 (35)
Rear	33 (45)
Except Aztek	38 (52)
Combination Valve Allen Bolts	
Differential Cover Bolt	
Astro & Safari	22 (30)
"C" & "K" Series	24 (33)
Express & Savana	30 (41)
"S" & "T" Series	
7 5/8" Ring Gear	25 (34)
8 5/8" Ring Gear	29 (39)
Pinion Shaft Lock Bolt ⁽¹⁾⁽²⁾	
Astro & Safari	19 (26)
"C", "G", "K", & "S" & "T" Series	
7 5/8" Ring Gear	20 (27)
8 1/2" & 8 5/8" Ring Gear	27 (37)
9 1/2" Ring Gear	37 (50)
Power Booster Nuts	
"C", "G", "K", "L" & "M" Series	27 (37)

2001 Chevrolet Suburban C1500

2000-01 BRAKES' 'Disc & Drum - Trucks - Except Tracker

"S" & "T" Series	30 (41)
Montana, Silhouette & Venture	18 (24)
Wheel Lug Nut	
"A", "B", "L", "M" & "U" Series	100 (136)
"C", "G" & "K" Series	
Single Wheel	140 (190)
Dual Wheel	175 (237)
"S" & "T" Series	92 (125)
Wheel Cylinder Bolt (Aztek)	8.9 (12)

(1) Use NEW pinion shaft lock bolt. DO NOT reuse bolt.

(2) On "C" and "K" series, apply Loctite No. 242 to bolt threads.