

#07-06-04-003: LSJ, L61, LK5, L52, LL8 Engine - Reduced Engine Power, MIL/SES Light, DTC P1516, P2135, P2138 (Replace PCM) - (Jan 19, 2007)

Subject: LSJ, L61, LK5, L52, LL8 Engine — Reduced Engine Power, MIL/SES Light, DTC P1516, P2135, P2138 (Replace PCM)

2005-2006 Chevrolet Cobalt, Cobalt SS, Malibu

2006 Chevrolet Colorado, TrailBlazer

2006 GMC Canyon, Envoy

2006 HUMMER H3

Models: 2005-2006 Saturn ION, ION Red Line

2006 Saab 9-7X

with ECOTEC™ 2.0L, 2.2L I-4 Cylinder Engine (VINs P, F— RPOs LSJ, L61) or

VORTEC™ 2.8L I-4, 3.5L I-5, 4.2L I-6 Cylinder Engine (VINs 8, 6, S — RPOs LK5, L52, LL8)

Attention: The following bulletin information is only to be used if the customer has returned for REPEAT repairs for DTCs P1516, P2135 and/or P2138.

Condition

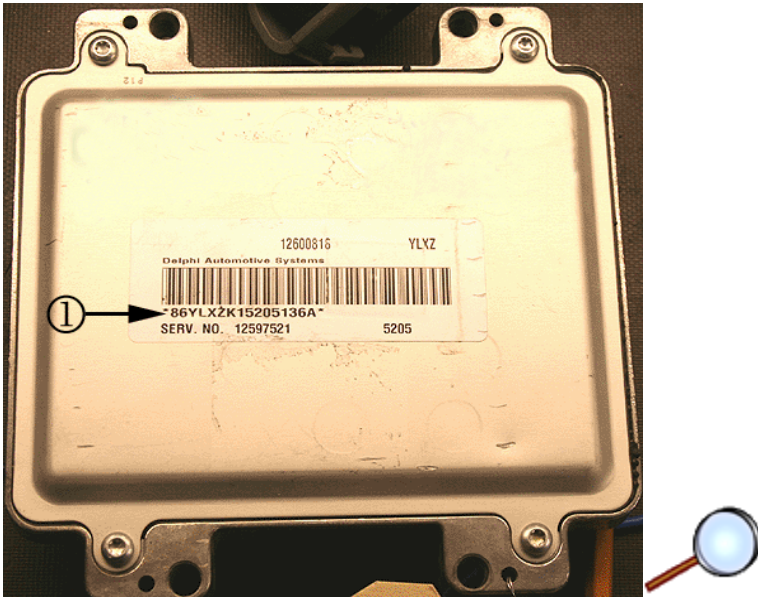
Some customers may comment on engine operation in the Reduce Engine Power mode with the MIL/SES light illuminated. This condition may be repeated and upon investigation, the technician may find the following DTCs set as current or in history:

- DTC P1516 Throttle Actuator Control (TAC) Module Throttle Actuator Position Performance
- DTC P2135 Throttle Position (TP) Sensor 1-2 Correlation
- DTC P2138 Accelerator Pedal Position (APP) Sensor 1-2 Correlation

Cause

This condition of a repeat DTC P1516, P2135 and/or P2138 may be caused by an internal concern with the PCM.

Correction



Important: DO NOT replace the APP sensor. Inspect the PCM build date first.

Before following the diagnostic information in SI on DTCs P1516, P2135 and/or P2138, an inspection of the PCM serial number year and Julian (PCM build) date will be necessary to determine if the PCM will need to be replaced to correct the repeat DTC P1516. Refer to Engine Control Module Replacement in SI in order to remove the PCM. Refer to the above graphic illustration (1) for the location of the PCM serial number.

The serial number is read left to right. The last digit of the year is the 9th character and the Julian date is comprised of the 10th, 11th and 12th characters and is used to determine the PCM build date. Refer to the example below to read a build date from the PCM serial number:

* 8 6 Y N A U K 1 5 3 2 5 0 R P N *

If the PCM year and Julian dates are between 5182 and 5304, replace the PCM. Refer to the Part Catalog to order the correct PCM for your vehicle application, if necessary.

Vehicles with PCM built outside the dates should refer to SI diagnostics for DTCs P1516, P2135 and/or P2138.